



ALMARASEM
DEVELOPMENT

16090 | +2(02)16090
www.almarasemdevelopment.com

Mar Bay
Ras El Hekma

ABOUT ALMARASEM

Established in 1997, Al Marasem Group was founded with the vision to emerge as a leading player in the Egyptian market. With the objective to create integrated, mixed-use communities that set new benchmarks for residential, retail, leisure, and entertainment offerings.

Over the years, Al Marasem has effectively translated this vision into reality, solidifying its position as a prominent contributor to Egypt's real estate sector. The company's portfolio boasts several mega projects that have significantly contributed to the local market's growth.

Al Marasem's expertise is vividly evident through the numerous initiatives and ventures that have been undertaken in Egypt over the past 27 years. The company has successfully executed a wide array of remarkable projects, spanning airports, residential developments, hotels, transportation infrastructure, roads and bridges.

In 2017, Al Marasem embarked on a journey to venture within the real estate sector; leveraging their pristine reputation as a credible, quality- oriented and committed developer, to drive the company's vision to expand within the Egyptian market and the region at large.

With its project "Fifth Square," in New Cairo, Al Marasem has made its foray into the real estate market in Egypt.

It's a mixed-use community that comprises a hotel, hotel apartments "Lake Residence," managed by Rotana, Fifth Square Mall, two residential zones "Fifth Square" & "Moon Residences," a villa zone "Villa Square" that are served by two clubhouses to ensure each zone's maximum privacy, and the luxurious residential compound "Mar Ville New Zayed."

Mar Ville emerges as a harmonious symphony of architecture and lush outdoor spaces, offering tranquility and privacy in a green sanctuary.

Al Marasem is poised to become a market leader in record time, with expansion plans across all of Egypt.

Their newest project, Mar Bay in Ras El Hekma, sets the stage for this ambitious growth.

OVERVIEW

Mar Bay, our newest project in Ras El Hekma, is a family-crafted community set against crystal blue waters and pristine sandy beaches.

Designed to offer breathtaking sea views from every unit through cascading levels, Mar Bay combines simplicity with elegance.

This development features luxury finishes, swimmable lagoons all over the project, and an alluring coastal living experience with a wide range of activities for all age groups, ensuring that every family member has something to enjoy.

Located on the bay, residents enjoy unparalleled access to tranquil waters and vibrant life.

The bay setting enhances scenic beauty and recreational opportunities like boating and seaside dining along with a linear range of top notch facilities and amenities, creating a serene environment perfect for relaxation.

Welcome to Mar Bay, the perfect sanctuary for families to create lasting memories.



ABOUT OUR PARTNERS

We are proud to collaborate with Building Design Partnerships (BDP), founded in 1961 and recognized as one of the largest international architecture firms in the United Kingdom.

Today, BDP stands as one of the most inspiring design consultancies in the world, with a leading track record in all major sectors, including housing, retail, workspace, education, sports, and leisure.

Their expertise and innovative approach contribute significantly to the exceptional quality and vision of our projects.

STRATEGIC LOCATION

Mar Bay enjoys a prime location at Kilo 191 on the Alex-Marsa Matrouh road, with easy access to Wadi El Natroun Road, Dabaa Road, and close proximity to Al Alamein and its airport.

Nestled in Ras El Hekma, renowned for its stunning natural beauty and pristine beaches, Mar Bay offers an exceptional opportunity for buying or investing in prime coastal real estate.

Its strategic location ensures convenient travel and promises a wise investment in one of Egypt's most promising coastal areas.



MASTERPLAN

Mar Bay unfolds like a masterpiece directly on the bay along the serene coastline of Ras El Hekma.

With 1,200 meters of pristine beachfront complemented by 1,050 meters of beachfront peninsula which are directly connected to the sea.

This development is meticulously crafted with swimmable lagoons all over the project offering an unparalleled living experience.

Nestled at Kilo 191 on the Alex-Marsa Matrouh road, Mar Bay stands as a beacon of luxurious coastal living in a strategic location.

Mar Bay is designed as a family-crafted coastal community, where families are at the heart of every detail. Here, families can create lasting memories together, surrounded by beauty.

Relish in front row villas, elegant standalone villas, twin houses, townhouses, and charming chalets, each unit is a testament to refined family living.

Abundant greenery enhances the serene ambiance, while peaceful lagoons further add to the tranquil environment.

The bayside location offers unparalleled access to gentle waters and vibrant marine life.

The hotel along with the fine dining restaurants located inside the stunning peninsula, situated in the commercial area, provide exclusive coastal views and recreational opportunities.

This unique combination makes Mar Bay an ideal place for a luxurious and relaxed lifestyle.



SCENIC WATERFRONT VIEWS

Relishing the captivating allure of waterfront living from the comfort of your own terrace is how you start your day, where special vistas await at every unit.

Each unit's terrace is carefully constructed with sophistication, ensuring an uninterrupted view of the serene waters that stretch beyond.

Unwinding now is not just a fleeting moment, it's a way of living.



EXCEPTIONAL FACILITIES

Mar Bay offers a wide range of facilities designed to enhance residents' quality of life.

Enjoy top class fitness centers, swimming pools, and multisports courts for an active lifestyle.

Relax in beautifully landscaped parks, scenic jogging trails, and serene water features.

Families will love the playgrounds, With various retail outlets, cafes, and community spaces, Mar Bay combines convenience and luxury in a vibrant, welcoming environment.





A World of Entertainment, Activities, & Family Leisure

Mar Bay offers something for every age. Little ones can enjoy the Day Care, Play Area, and Mini Splash Park, while older kids and teens can hit the Skate Park, Mini Golf, Go Karting, skating rink, or sports courts like football, basketball, tennis, volleyball, and padel.

You can always stay active with the 36-meter Green Walking Trail, bike lanes, and beachside Yoga & Pilates decks. Work out at the Open-Air Gym or take a swim in one of our relaxing pools. There's also a shaded beach library for quiet moments and uniquely abled playgrounds and pools for inclusive fun.

Unwind at the Beach Cinema, Billiard Room, or Board Games Area. Enjoy the picnic zone, scenic workspace, and tasty bites from kiosks and food trucks. The Events Zone brings the community together with regular entertainment and gatherings.



SPORTS AND RECREATION FACILITIES

Fuel your sporting passions at our newly designed sports and recreation facilities.

Whether you're honing your skills or engaging in various activities, our facilities cater to every enthusiast.

Designed to elevate your athletic pursuits, these versatile courts provide the perfect environment for both casual play and professional training.



LUSH GREEN LANDSCAPES

Mar Bay's landscape is a green paradise, designed to blend with the natural beauty of Ras El Hekma.

Spanning acres of lush greenery, the area features well-kept gardens, water features, and tree-lined paths that invite residents to enjoy nature's calm.

The vibrant plants and open spaces create a relaxing environment, offering a break from daily life.

Every part of Mar Bay reflects our commitment to preserving and enhancing the natural landscape, ensuring that residents enjoy a peaceful and refreshing living experience.

A wide-angle photograph of a modern outdoor swimming pool. The pool is filled with clear, turquoise water. To the left, a wooden deck with horizontal planks leads to the pool. The pool is bordered by a low wall of light-colored stone tiles. Behind the pool, there is a lush garden with various tropical plants, including palm trees and agave-like plants, set against a white wall. The scene is brightly lit, suggesting a sunny day.

TRANQUIL SWIMMING POOLS

There's no better way to unwind other than immersing yourself into a cool dip and enjoying sunbathing moments.

Our beachfront swimming pools are crafted to optimize every moment, where every splash is an invitation to surrender to the cool water and travel to another world.

Surrounded by lush greenery and architectural elegance, our pools offer a serene sanctuary that you'll experience for the first time and surely want more of.

There is no better way to unwind other than immersing yourself into a cool dip and enjoying sunbathing moments less than a few steps away.

An aerial photograph of a swimming lagoon. The water is a clear, vibrant turquoise color. On the left side, there is a sandy beach area with two sets of dark brown, curved lounge chairs. A small palm tree is positioned near the bottom left lounge chairs. The overall scene is bright and sunny, with reflections on the water's surface.

SWIMMABLE LAGOONS

Imagine waking up to the sound of gentle waves and stepping out to a private sandy shoreline just steps from your door.

Every unit MarBay offers direct access to crystal-clear swimmable lagoons, designed for both relaxation and recreation.

Enjoy peaceful waterfront views right from your window, a calm escape from everyday life.

Whether you're looking to unwind under the sun or take a refreshing dip, your lagoon-front lifestyle awaits.



BEACH CLUBHOUSE

Our clubhouse overlooks the beach, providing an oasis of serenity at its finest.

This serene environment is designed to help you tune in with your body, soul, and mind.

Whether you're seeking solitude or engaging in social activities, the clubhouse offers a perfect blend of relaxation and community.

It's the ideal place to unwind, connect, and rejuvenate.

INTERNATIONAL CULINARY EXPERIENCE

The background image shows an outdoor dining area on a terrace. Several tables are set with white tablecloths, dark wooden chairs, and glassware. A large potted plant is on the right. In the background, there is a view of the sea and distant mountains under a clear sky.

At Mar Bay, we offer a vibrant array of dining spots featuring international cuisines that cater to every palate, ensuring a delightful culinary journey for all.

Whether you're in the mood for a casual bite or an exquisite dining experience, our restaurants and cafes provide a diverse selection of flavors from around the world, all set against stunning sea views.

Enjoy your meals with the soothing backdrop of the sea making every dining experience at Mar Bay truly unforgettable.



VIBRANT COMMERCIAL STRIP

Embark on a real experience of indulging in our revolutionary commercial strip poised to redefine luxury retail and dining experiences.

Pervaded with timeless elegance and architectural finesse, this project offers a curated selection of upscale shops.

This vibrant hub creates the perfect setting for exclusive shopping and exquisite culinary delights, allowing you to elevate your senses amidst the serene backdrop of the ocean.

BEACH ACTIVITIES

Life at the beach compound is more than just stunning views, it's an active lifestyle.

Residents can enjoy a variety of beach activities right outside their doorstep, from morning jogs along the shoreline to swimming in calm waters.

Spend your afternoons playing beach volleyball, or simply relaxing under the sun with a good book.





OPEN-AIR GYM

Our highly equipped outdoor gym makes looking after your body and well-being effortless and enjoyable.

Set against the backdrop of the beach, exercising here is never tedious.

If you decided to work out solo or with your friends, you'll find that immersing yourself in this serene setting enhances your fitness journey and motivates you to achieve your health goals.

WORLD-CLASS SPA

Treat yourself to a rejuvenating spa treatment overlooking the water and experience a holistic vibe that revitalizes you.

Our spa offers a variety of treatments designed to enhance your physical and mental well-being.

Let the soothing sounds of the waves help you achieve a state of complete relaxation and feel truly alive.



Endless Facilities.. Convenience at Your Doorstep

Everyday essentials are well taken care of, making life here easy and hassle-free. You'll find a supermarket, hairdresser, dry cleaning, babysitting, and housekeeping services all within reach.

Mar Bay puts accessibility and sustainability first with stroller friendly beach pathways that make getting around easy for families. With dedicated bike lanes and electric transportation options, it's simple to enjoy a low-impact lifestyle while keeping the peaceful beach environment intact.



STATE OF THE ART HOTEL

Settled amidst the gentle sway of sea waves and the symphony of nature, our hotel stands as a beacon of luxury.

Each room offers panoramic views of nature's trees and golden sands from the distant horizons, where the rhythm of the waves lulls you into a state of blissful relaxation.

Situated on an island overlooking the peninsula, with the sea as your constant companion, your stay with us is never just a getaway; it's a remarkable voyage into the essence of coastal charm.



EXQUISITE SERVICED APARTMENTS

We have redefined the concept of luxurious living with our exquisite serviced apartments, where elegance seamlessly meets convenience.

Managed under the highest international standards, every aspect of your stay is curated by a dedicated concierge, ensuring impeccable service and unparalleled comfort.

Experience a lifestyle of effortless indulgence and refinement, where every detail is designed to exceed your expectations and provide the ultimate in relaxation.



UNIT ARCHITECTURE

DOUBLE HEIGHT UNITS

Picture waking up in a beachside chalet, with the gentle whisper of waves lulling you into a day of bliss.

Experience the exclusivity of front row villas, each promising privacy and unobstructed sea views.

The landscape is dotted with elegant separate villas, twin houses, townhouses, and charming chalets, each unit a testament to refined family living.

Every unit is designed to blend luxury with comfort, ensuring a unique living experience that caters to the discerning tastes of our residents.



TERRACES

The background of the image is a blurred photograph of a modern building with a grid-like facade. The building is light-colored, and the grid pattern is composed of dark lines. In the foreground, there is a green, wavy pattern that looks like a reflection or a decorative element. The overall tone is warm and modern.

SHORE

• All renderings and visuals are for demonstrative purposes only.
• Dimensions may vary within an acceptable tolerance.
• The developer retains the right to make necessary alterations to the Master Layout for the benefit of the project.



WAVES

• All renderings and visuals are for demonstrative purposes only.
• Dimensions may vary within an acceptable tolerance.
• The developer retains the right to make necessary alterations to the Master Layout for the benefit of the project.





WAVES WEST

• All renderings and visuals are for demonstrative purposes only.
• Dimensions may vary within an acceptable tolerance.
• The developer retains the right to make necessary alterations to the Master Layout for the benefit of the project.



HORIZON

• All renderings and visuals are for demonstrative purposes only.
• Dimensions may vary within an acceptable tolerance.
• The developer retains the right to make necessary alterations to the Master Layout for the benefit of the project.



VILLAS

HORIZON WEST

- All renderings and visuals are for demonstrative purposes only.
- Dimensions may vary within an acceptable tolerance.
- The developer retains the right to make necessary alterations to the Master Layout for the benefit of the project.



ALMARASEM
DEVELOPMENT



VILLA - A



Mar Bay
Ras El Mekha

- All renderings and visuals are for demonstrative purposes only.
- Dimensions may vary within an acceptable tolerance.
- The developer retains the right to make necessary alterations to the Master Layout for the benefit of the project.
- Images of furniture, wall cladding and all interior decoration are artistic and are for display purposes only.

VILLA - A



Mar Bay
Ras El Hekma

- All renderings and visuals are for demonstrative purposes only.
- Dimensions may vary within an acceptable tolerance.
- The developer retains the right to make necessary alterations to the Master Layout for the benefit of the project.
- Images of furniture, wall cladding and all interior decoration are artistic and are for display purposes only.

VILLA - A



Mar Bay
Ras El Hekma

- All renderings and visuals are for demonstrative purposes only.
- Dimensions may vary within an acceptable tolerance.
- The developer retains the right to make necessary alterations to the Master Layout for the benefit of the project.
- Images of furniture, wall cladding and all interior decoration are artistic and are for display purposes only.



VILLA - A

VILLA - A

AREA
420 M2

OF
BEDROOMS

5 BEDROOM
+ GUEST ROOM



GROUND FLOOR: 180 SQM



FIRST FLOOR: 172 SQM



PENTHOUSE: 68 SQM



VILLA - B



• All renderings and visuals are for demonstrative purposes only.
• Dimensions may vary within an acceptable tolerance.
• The developer retains the right to make necessary alterations to the Master Layout for the benefit of the project.
• Images of furniture, wall cladding and all interior decoration are artistic and are for display purposes only.



VILLA - B



• All renderings and visuals are for demonstrative purposes only.
• Dimensions may vary within an acceptable tolerance.
• The developer retains the right to make necessary alterations to the Master Layout for the benefit of the project.
• Images of furniture, wall cladding and all interior decoration are artistic and are for display purposes only.



VILLA - B

VILLA - B

VILLA - B

AREA

350 M2

OF BEDROOMS

4 BEDROOM
+ GUEST ROOM



GROUND FLOOR: 159 SQM



FIRST FLOOR: 139 SQM



PENTHOUSE: 52 SQM



All renderings and visuals are for demonstrative purposes only.
Images of furniture, wall cladding and all interior decoration are artistic and are for display purposes only.
Dimensions may vary within an acceptable tolerance.
The developer retains the right to make necessary alterations to the Master Layout for the benefit of the project.

VILLA - BF



All renderings and visuals are for demonstrative purposes only.
Dimensions may vary within an acceptable tolerance.
The developer retains the right to make necessary alterations to the Master Layout for the benefit of the project.
Images of furniture, wall cladding and all interior decoration are artistic and are for display purposes only.

VILLA - BF



Mar Bay
Ras El Helwa

- All renderings and visuals are for demonstrative purposes only.
- Dimensions may vary within an acceptable tolerance.
- The developer retains the right to make necessary alterations to the Master Layout for the benefit of the project.
- Images of furniture, wall cladding and all interior decoration are artistic and are for display purposes only.

VILLA - BF



Mar Bay
Ras El Helwa

- All renderings and visuals are for demonstrative purposes only.
- Dimensions may vary within an acceptable tolerance.
- The developer retains the right to make necessary alterations to the Master Layout for the benefit of the project.
- Images of furniture, wall cladding and all interior decoration are artistic and are for display purposes only.



VILLA - BF

Mar Bay
Ras El Hekma

- All renderings and visuals are for demonstrative purposes only.
- Dimensions may vary within an acceptable tolerance.
- The developer retains the right to make necessary alterations to the Master Layout for the benefit of the project.
- Images of furniture, wall cladding and all interior decoration are artistic and are for display purposes only.

VILLA - BF

AREA
350 M2

OF
BEDROOMS
4 BEDROOM
+ GUEST ROOM



GROUND FLOOR: 160 SQM



FIRST FLOOR: 144 SQM



PENTHOUSE: 46 SQM

Mar Bay
Ras El Hekma

All renderings and visuals are for demonstrative purposes only.
Images of furniture, wall cladding and all interior decoration are artistic and are for display purposes only.
Dimensions may vary within an acceptable tolerance.
The developer retains the right to make necessary alterations to the Master Layout for the benefit of the project.



VILLA - C



VILLA - C



VILLA - C

AREA

270 M2

OF BEDROOMS

4 BEDROOM
+ GUEST ROOM



VILLA - CF



MarBay
Ras El Mekma

- All renderings and visuals are for demonstrative purposes only.
- Dimensions may vary within an acceptable tolerance.
- The developer retains the right to make necessary alterations to the Master Layout for the benefit of the project.
- Images of furniture, wall cladding and all interior decoration are artistic and are for display purposes only.



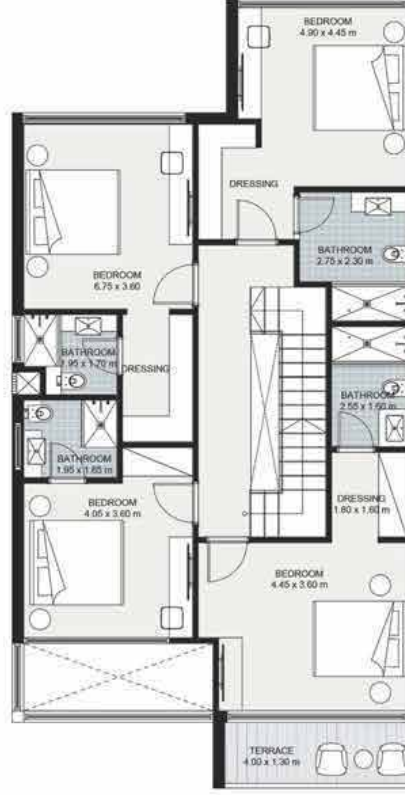
VILLA - CF

AREA

270 M2

OF
BEDROOMS

4 BEDROOM
+ GUEST ROOM



All renderings and visuals are for demonstrative purposes only.
• Dimensions may vary within an acceptable tolerance.
• The developer retains the right to make necessary alterations to the Master Layout for the benefit of the project.
• Images of furniture, wall cladding and all interior decoration are artistic and are for display purposes only.

VILLA - D



All renderings and visuals are for demonstrative purposes only.
• Dimensions may vary within an acceptable tolerance.
• The developer retains the right to make necessary alterations to the Master Layout for the benefit of the project.
• Images of furniture, wall cladding and all interior decoration are artistic and are for display purposes only.

VILLA - D

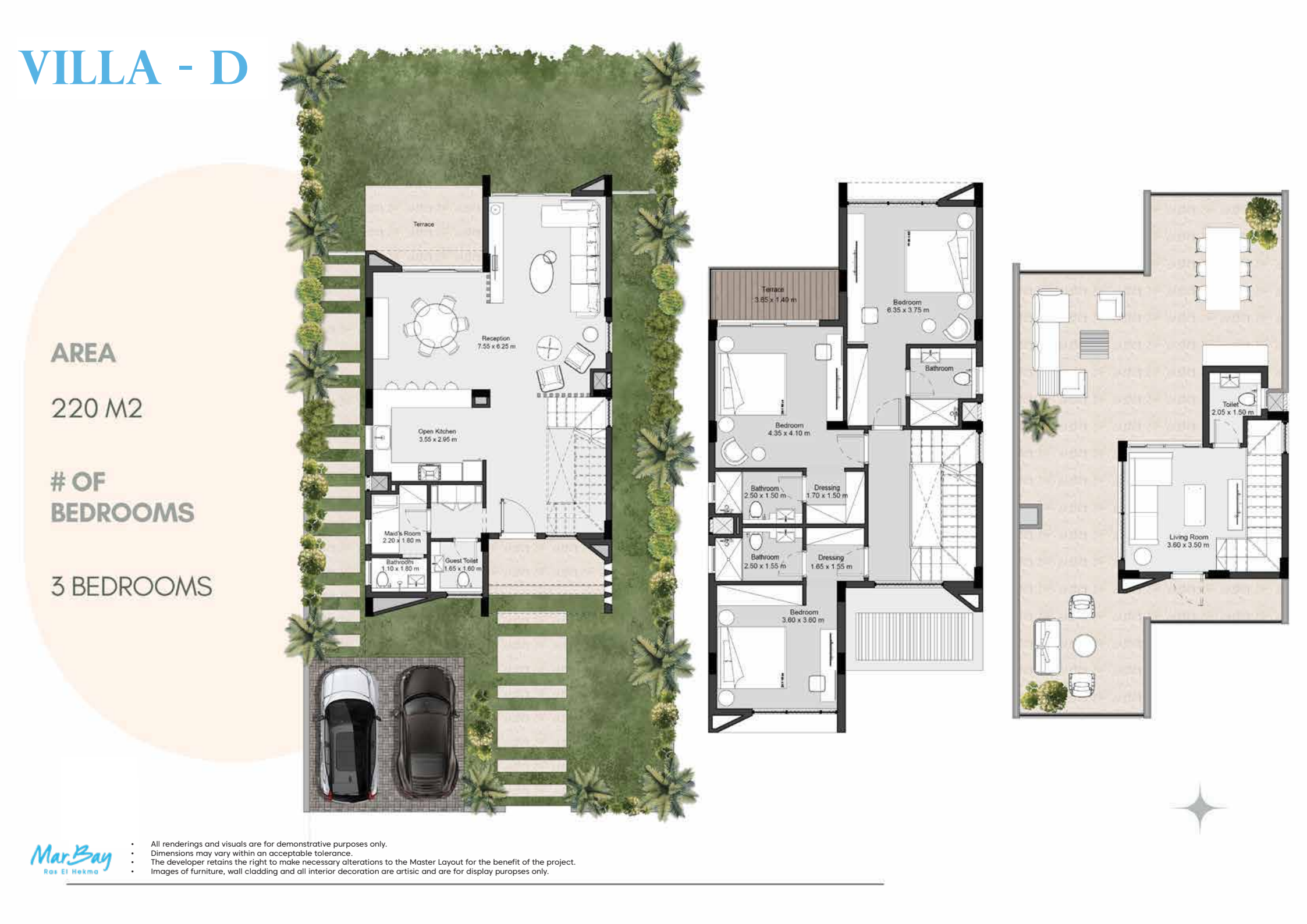


VILLA - D





VILLA - D



VILLA - D

AREA
220 M2

OF
BEDROOMS
3 BEDROOMS

VILLA - D

AREA 220 M2

OF BEDROOMS 3 BEDROOMS

RECEPTION	7.55 X 6.25 M
KITCHEN	3.55 X 2.95 M
MAID'S ROOM	2.20 X 1.80 M
MAID'S BATHROOM	1.80 X 1.10 M
GUEST TOILET	1.65 X 1.60 M

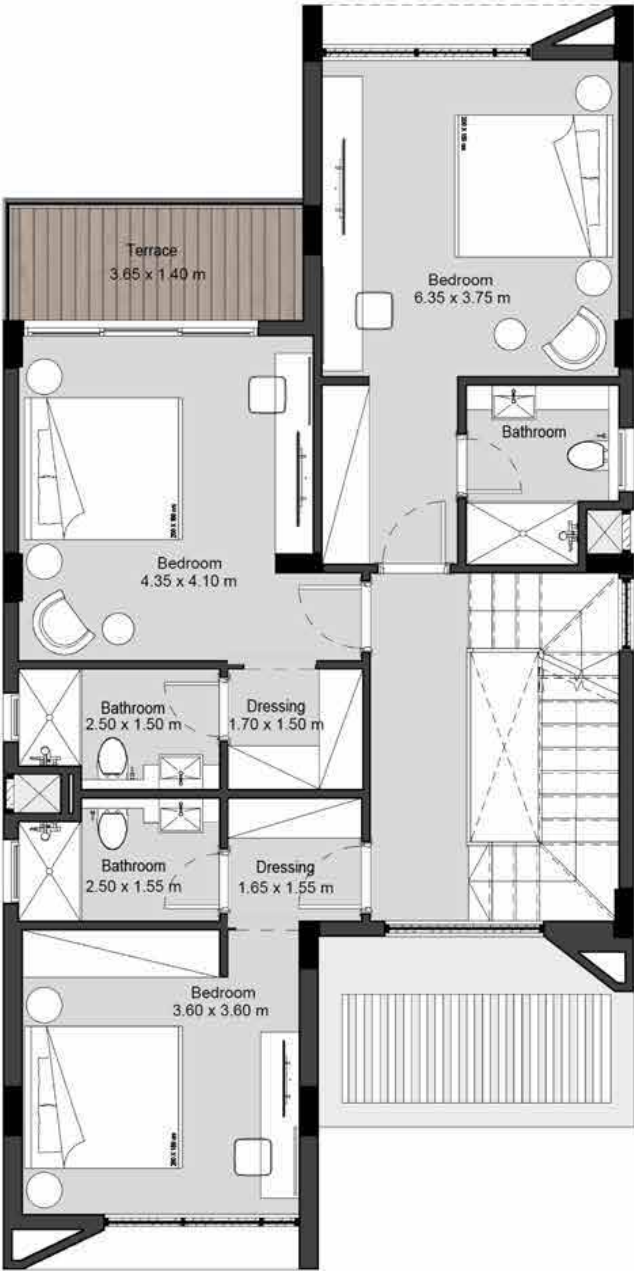


VILLA - D

AREA 220 M2

OF BEDROOMS 3 BEDROOMS

BEDROOM	4.35 X 4.10 M
BATHROOM	2.50 X 1.50 M
DRESSING	1.70 X 1.50 M
BEDROOM	6.35 X 3.75 M
BEDROOM	3.60 X 3.60 M
BATHROOM	2.50 X 1.55 M
DRESSING	1.65 X 1.55 M
TERRA	3.65 X 1.40 M



VILLA - D

AREA	220 M2
# OF BEDROOMS	3 BEDROOMS
OPEN TERRACE AREA	77.75 M2
LIVING ROOM	3.60 X 3.50 M
TOILET	2.05 X 1.50 M



• All renderings and visuals are for demonstrative purposes only.
• Dimensions may vary within an acceptable tolerance.
• The developer retains the right to make necessary alterations to the Master Layout for the benefit of the project.
• Images of furniture, wall cladding and all interior decoration are artistic and are for display purposes only.

TWINHOUSE



TWINHOUSE



MarBay
Dus El Hekma

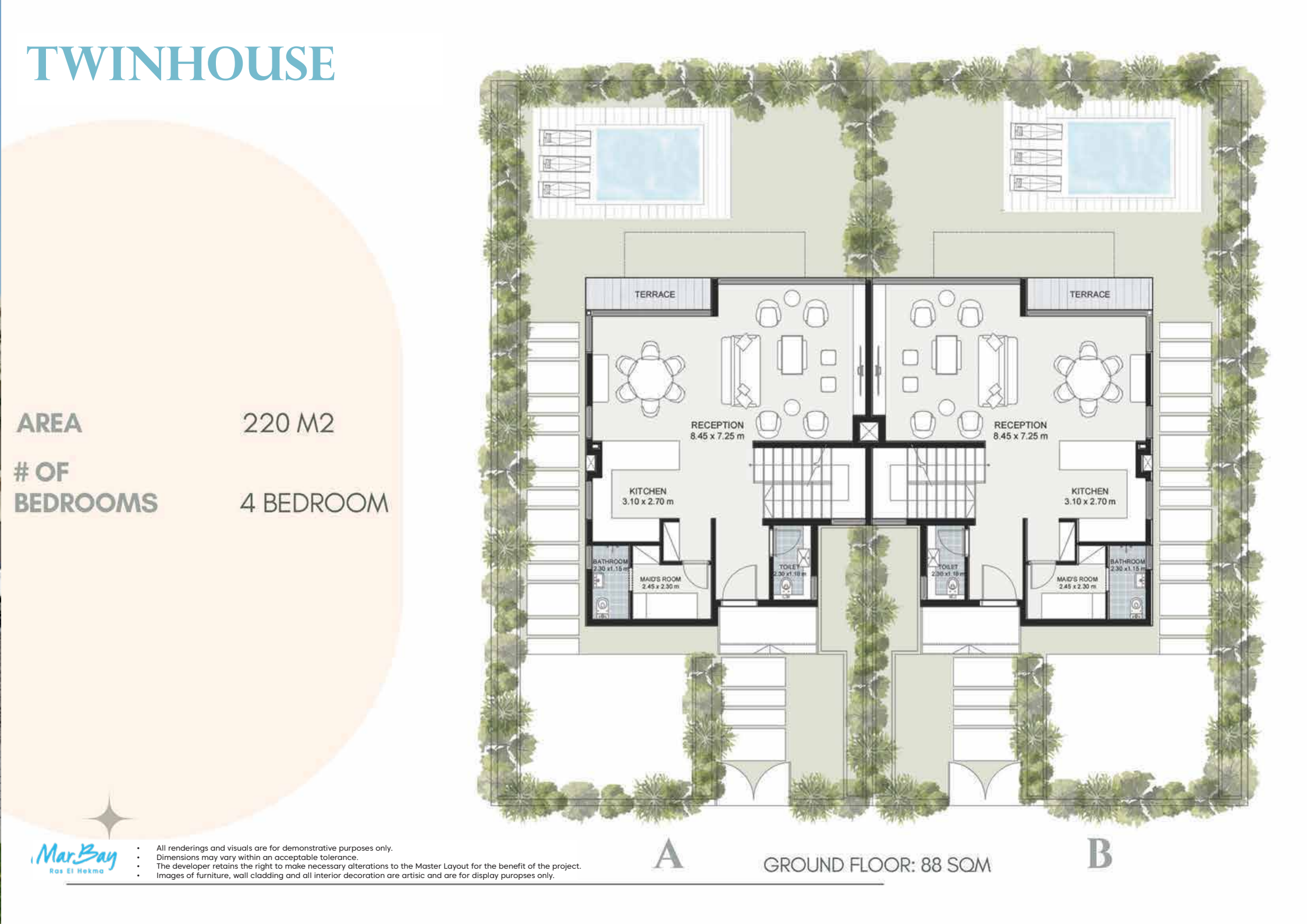
- All renderings and visuals are for demonstrative purposes only.
- Dimensions may vary within an acceptable tolerance.
- The developer retains the right to make necessary alterations to the Master Layout for the benefit of the project.
- Images of furniture, wall cladding and all interior decoration are artistic and are for display purposes only.

TWINHOUSE



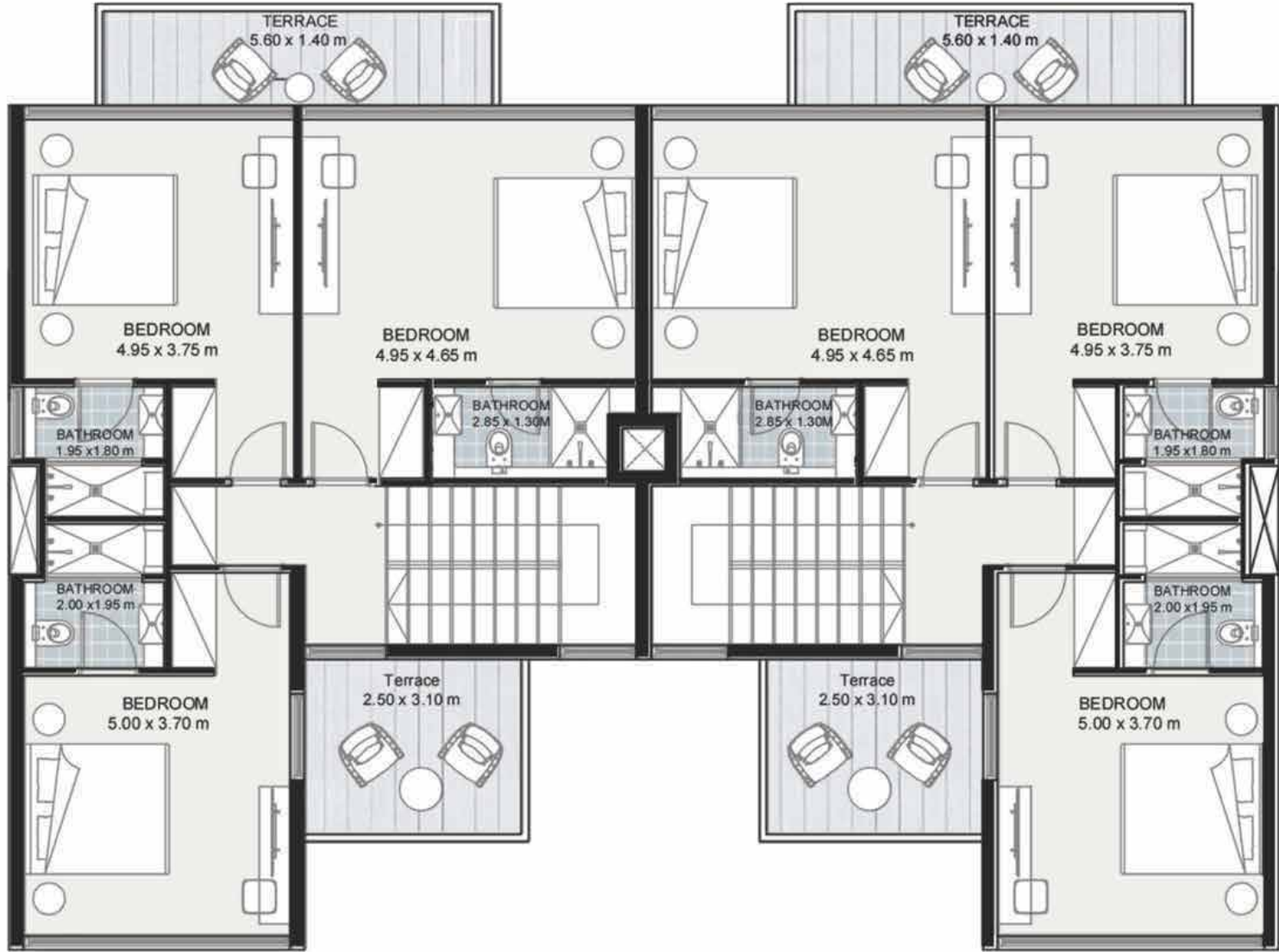
TWINHOUSE





TWINHOUSE

AREA 220 M2
OF BEDROOMS 4 BEDROOM



A

FIRST FLOOR: 99 SQM

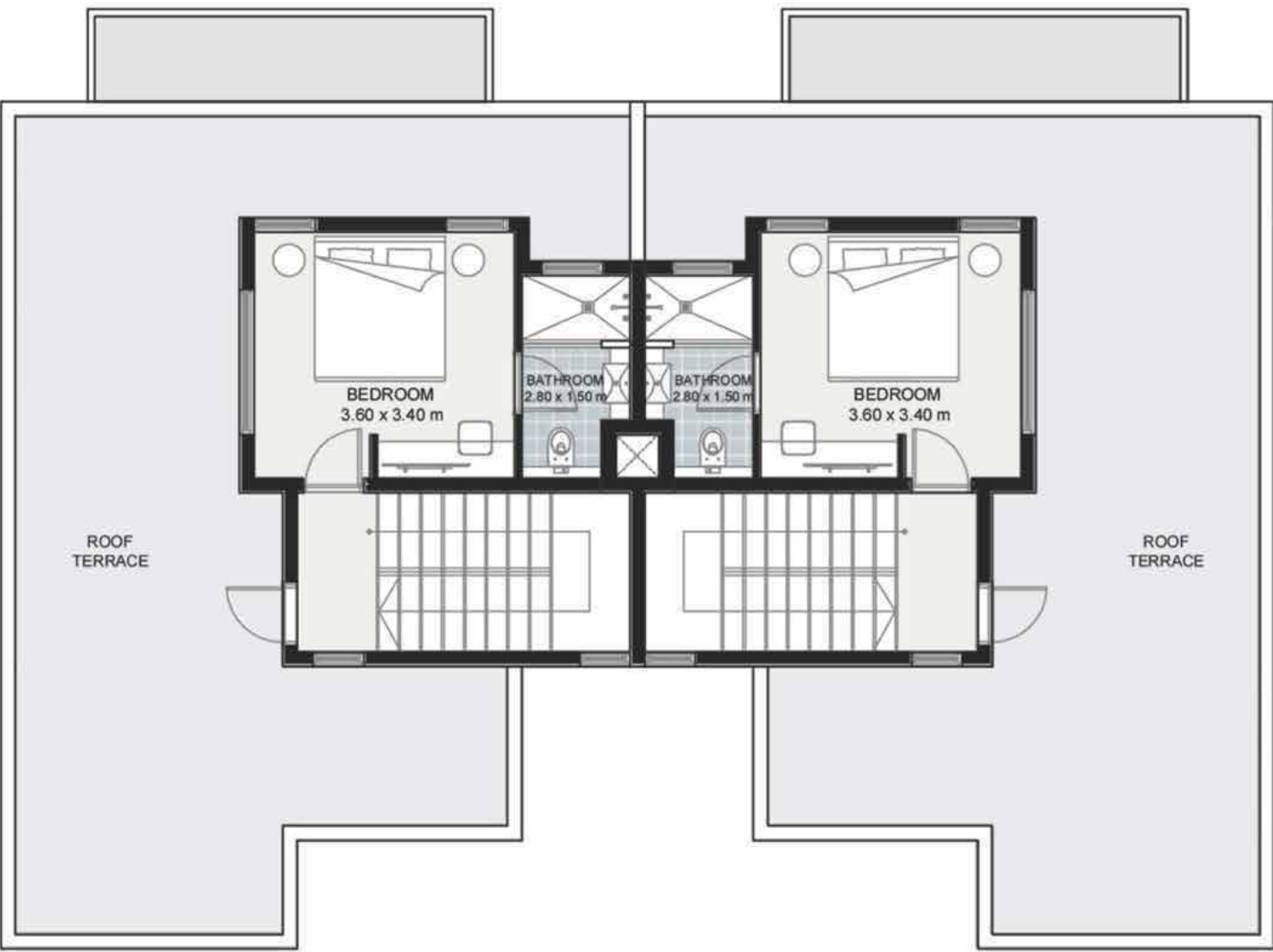
B

Mar.Bay
Ras El Hekma

- All renderings and visuals are for demonstrative purposes only.
- Dimensions may vary within an acceptable tolerance.
- The developer retains the right to make necessary alterations to the Master Layout for the benefit of the project.
- Images of furniture, wall cladding and all interior decoration are artistic and are for display purposes only.

TWINHOUSE

AREA 220 M2
OF BEDROOMS 4 BEDROOM



A

PENTHOUSE: 33 SQM

B

Mar.Bay
Ras El Hekma

- All renderings and visuals are for demonstrative purposes only.
- Dimensions may vary within an acceptable tolerance.
- The developer retains the right to make necessary alterations to the Master Layout for the benefit of the project.
- Images of furniture, wall cladding and all interior decoration are artistic and are for display purposes only.

TWINHOUSE - F



TWINHOUSE - F



TWINHOUSE - F

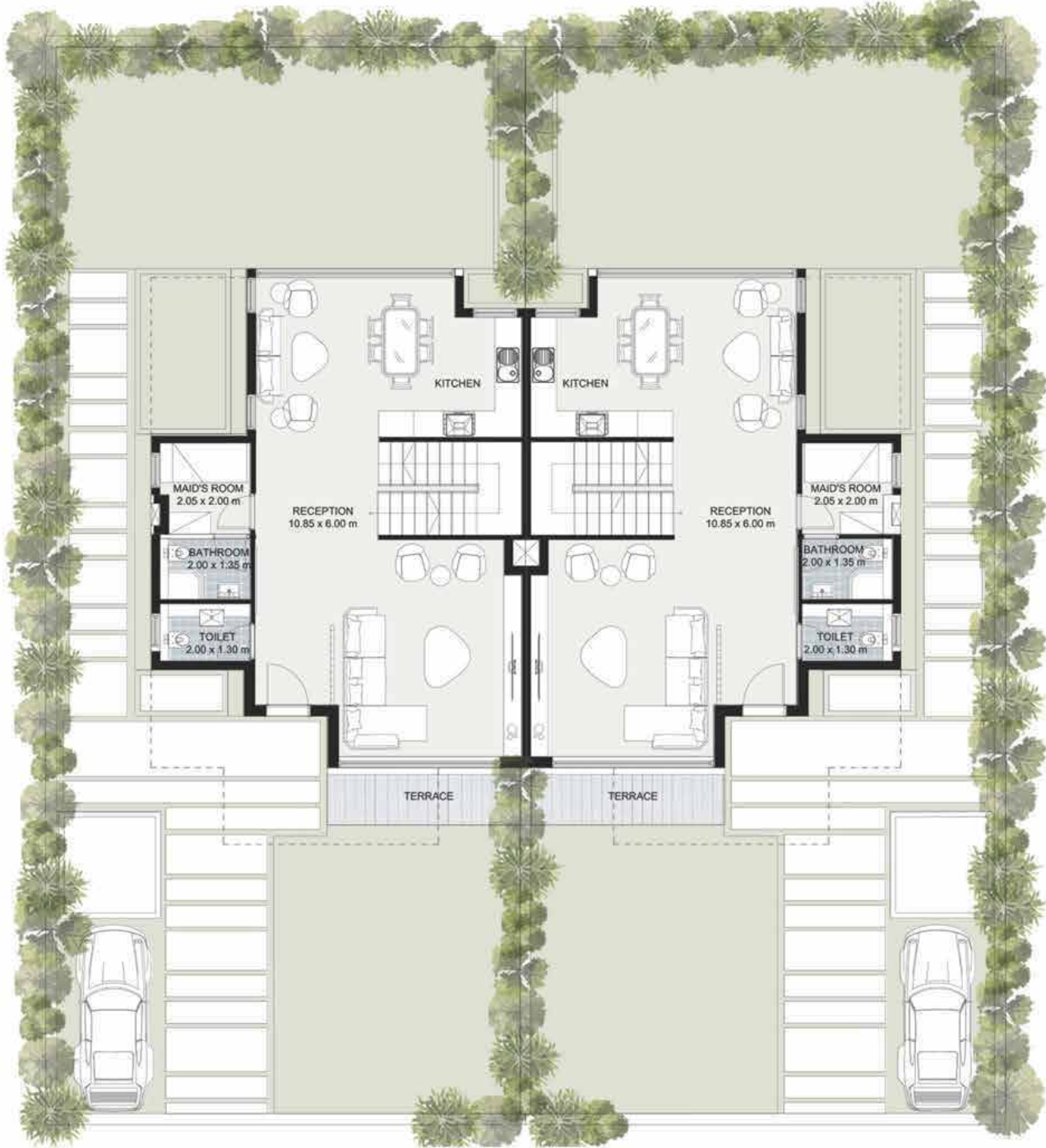


TWINHOUSE - F



TWINHOUSE - F

AREA 220 M2
OF BEDROOMS 4 BEDROOM



A

GROUND FLOOR: 86 SQM

B

Mar.Bay
Ras El Hekma

All renderings and visuals are for demonstrative purposes only.
Images of furniture, wall cladding and all interior decoration are artistic and are for display purposes only.
Dimensions may vary within an acceptable tolerance.
The developer retains the right to make necessary alterations to the Master Layout for the benefit of the project.

TWINHOUSE - F

AREA 220 M2
OF BEDROOMS 4 BEDROOM



A

FIRST FLOOR: 100 SQM

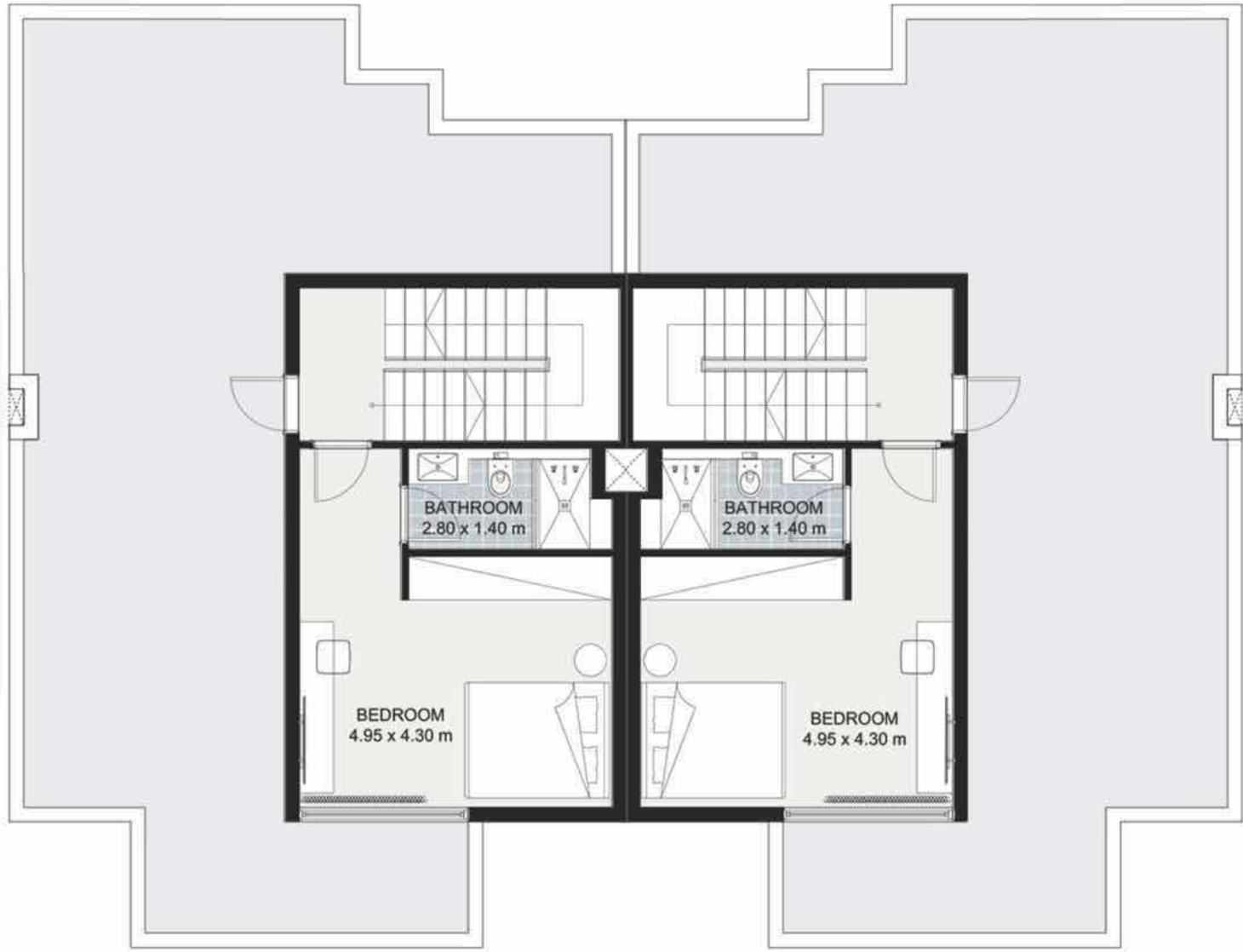
B

Mar.Bay
Ras El Hekma

All renderings and visuals are for demonstrative purposes only.
Dimensions may vary within an acceptable tolerance.
The developer retains the right to make necessary alterations to the Master Layout for the benefit of the project.
Images of furniture, wall cladding and all interior decoration are artistic and are for display purposes only.

TWINHOUSE - F

AREA 220 M2
OF BEDROOMS 4 BEDROOM



A

PENTHOUSE: 34 SQM

B

Mar Bay
Ras El Hokma

All renderings and visuals are for demonstrative purposes only.
Dimensions may vary within an acceptable tolerance.
The developer retains the right to make necessary alterations to the Master Layout for the benefit of the project.
Images of furniture, wall cladding and all interior decoration are artistic and are for display purposes only.

TWINHOUSE NEW



Mar Bay
Ras El Hokma

All renderings and visuals are for demonstrative purposes only.
Dimensions may vary within an acceptable tolerance.
The developer retains the right to make necessary alterations to the Master Layout for the benefit of the project.
Images of furniture, wall cladding and all interior decoration are artistic and are for display purposes only.

TWINHOUSE NEW



MarBay
Ras El Mekki

- All renderings and visuals are for demonstrative purposes only.
- Dimensions may vary within an acceptable tolerance.
- The developer retains the right to make necessary alterations to the Master Layout for the benefit of the project.
- Images of furniture, wall cladding and all interior decoration are artistic and are for display purposes only.

TWINHOUSE NEW



MarBay
Ras El Mekki

- All renderings and visuals are for demonstrative purposes only.
- Dimensions may vary within an acceptable tolerance.
- The developer retains the right to make necessary alterations to the Master Layout for the benefit of the project.
- Images of furniture, wall cladding and all interior decoration are artistic and are for display purposes only.

TWINHOUSE NEW



MarBay
Ras El Hekma

• All renderings and visuals are for demonstrative purposes only.
• Dimensions may vary within an acceptable tolerance.
• The developer retains the right to make necessary alterations to the Master Layout for the benefit of the project.
• Images of furniture, wall cladding and all interior decoration are artistic and are for display purposes only.

TWINHOUSE NEW

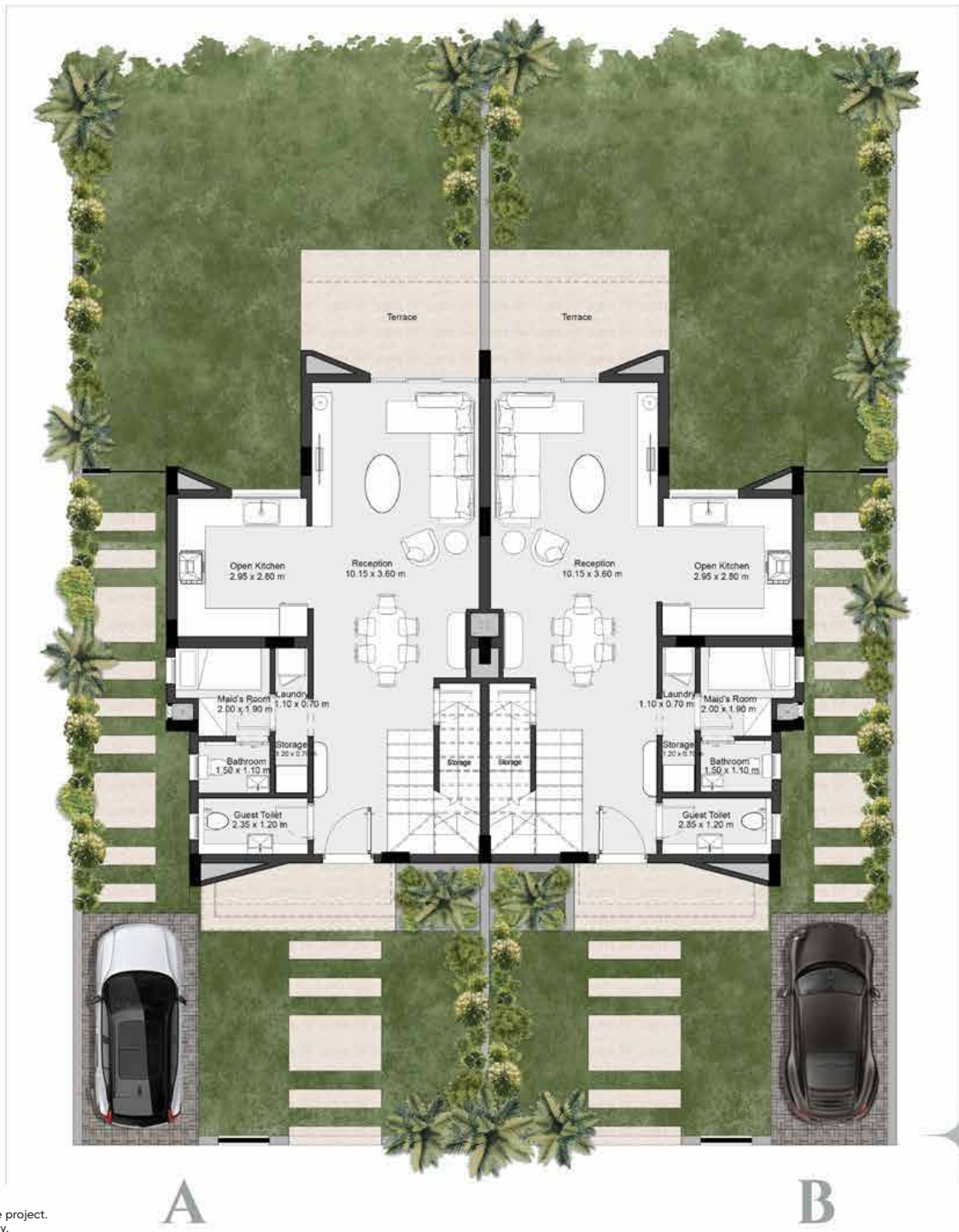
AREA 175 M2

OF BEDROOMS 3 BEDROOMS

RECEPTION	10.15 X 3.60 M
KITCHEN	2.95 X 2.80 M
MAID'S ROOM	2.00 X 1.90 M
MAID'S BATHROOM	1.50 X 1.10 M
LAUNDRY	1.10 X 0.70 M
STORAGE	1.20 X 0.70 M
GUEST TOILET	2.35 X 1.20 M

MarBay
Ras El Hekma

• All renderings and visuals are for demonstrative purposes only.
• Dimensions may vary within an acceptable tolerance.
• The developer retains the right to make necessary alterations to the Master Layout for the benefit of the project.
• Images of furniture, wall cladding and all interior decoration are artistic and are for display purposes only.



TWINHOUSE NEW

AREA 175 M2

OF BEDROOMS 3 BEDROOMS

BEDROOM	3.60 X 3.60 M
BATHROOM	2.40 X 1.60 M
BEDROOM	3.90 X 3.60 M
MASTER BEDROOM	7.45 X 3.60 M
TERRACE	2.75 X 1.20 M



A

B

Mar.Bay
Ras El Hekma

- All renderings and visuals are for demonstrative purposes only.
- Dimensions may vary within an acceptable tolerance.
- The developer retains the right to make necessary alterations to the Master Layout for the benefit of the project.
- Images of furniture, wall cladding and all interior decoration are artistic and are for display purposes only.

TWINHOUSE NEW

AREA 175 M2

OF BEDROOMS 3 BEDROOMS

OPEN TERRACE AREA 62.5 M2

LIVING	3.00 X 2.45 M
TOILET	1.85 X 1.30 M



A

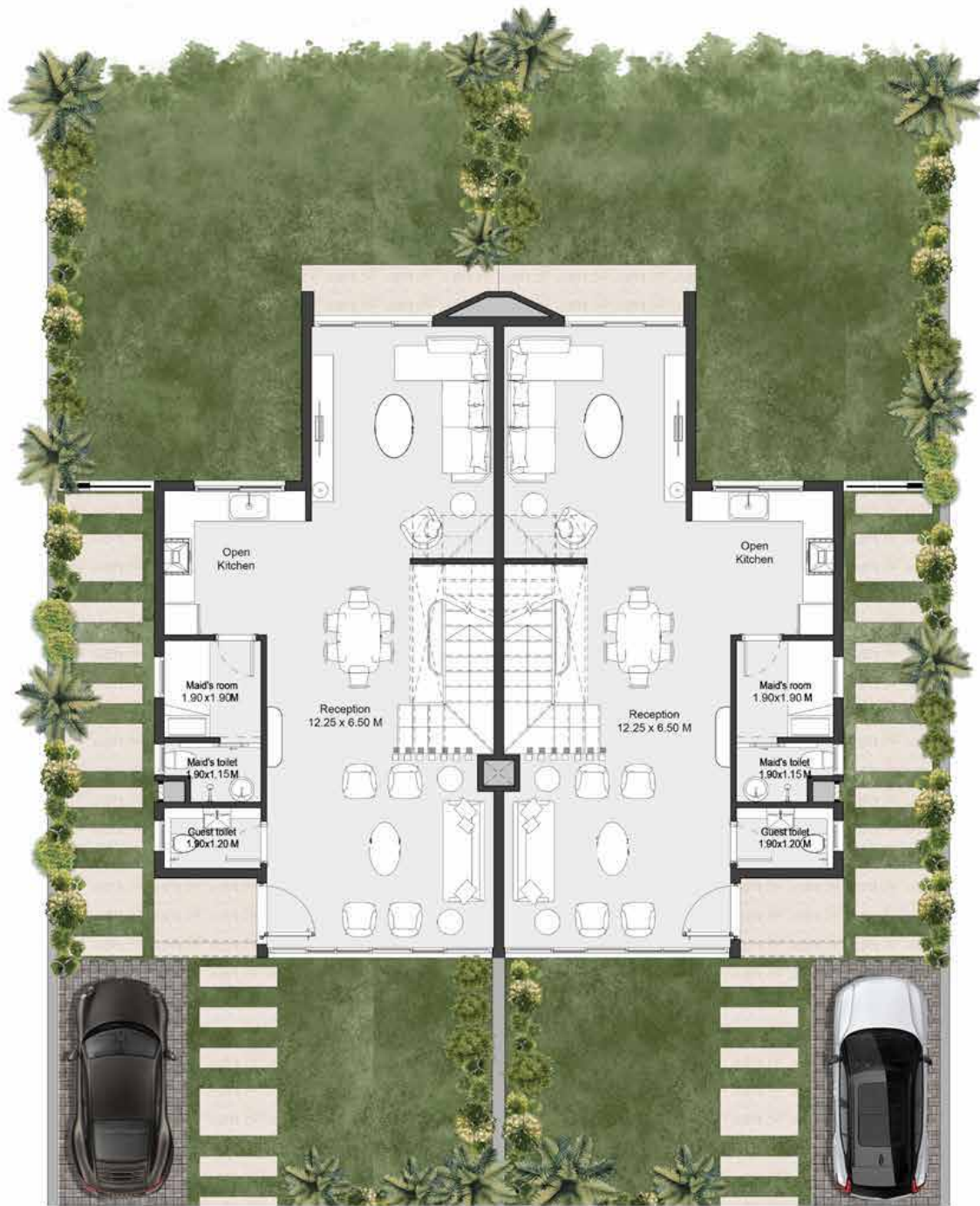
B

Mar.Bay
Ras El Hekma

- All renderings and visuals are for demonstrative purposes only.
- Dimensions may vary within an acceptable tolerance.
- The developer retains the right to make necessary alterations to the Master Layout for the benefit of the project.
- Images of furniture, wall cladding and all interior decoration are artistic and are for display purposes only.

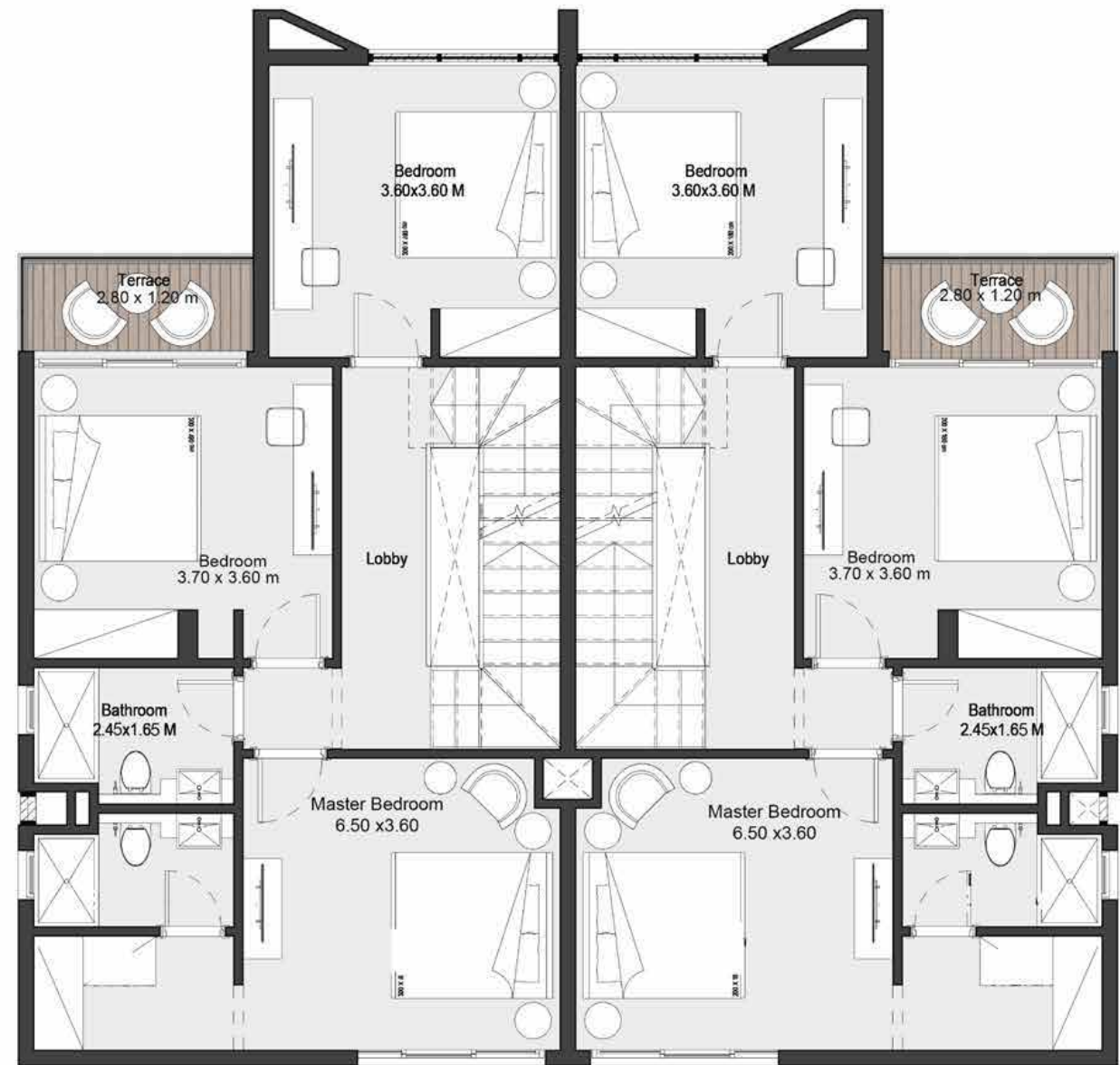
TWINHOUSE NEW - F

AREA	175 M2
# OF BEDROOMS	3 BEDROOMS
RECEPTION	12.25 X 6.50 M
GUEST TOILET	1.90 X 1.20 M
MAID ROOM	1.90 X 1.90 M
MAID TOILET	1.90 X 1.15 M



TWINHOUSE NEW - F

AREA	175 M2
# OF BEDROOMS	3 BEDROOMS
BEDROOM	3.60 X 3.60 M
BEDROOM	3.70 X 3.60 M
MASTER BEDROOM	6.50 X 3.60 M
BATHROOM	2.45 X 1.65 M
TERRACE	2.80 X 1.20 M



TWINHOUSE NEW - F

AREA	175 M2
TERRACE AREA	66 M2
# OF BEDROOMS	3 BEDROOMS
LIVING	3.75 X 2.40 M
TOILET	2.20 X 1.05 M



TOWNHOUSE



TOWNHOUSE



Mar Bay
Ras El Hekma

- All renderings and visuals are for demonstrative purposes only.
- Dimensions may vary within an acceptable tolerance.
- The developer retains the right to make necessary alterations to the Master Layout for the benefit of the project.
- Images of furniture, wall cladding and all interior decoration are artistic and are for display purposes only.





TOWNHOUSE

GROUND

AREA	CORNER 200 M2
	MIDDLE 175M2
# OF BEDROOMS	3 BEDROOM



GROUND FLOOR
CORNER: 84 SQM
MIDDLE: 72 SQM

TOWNHOUSE

FIRST

AREA	CORNER 200 M2 MIDDLE 175M2
# OF BEDROOMS	3 BEDROOM

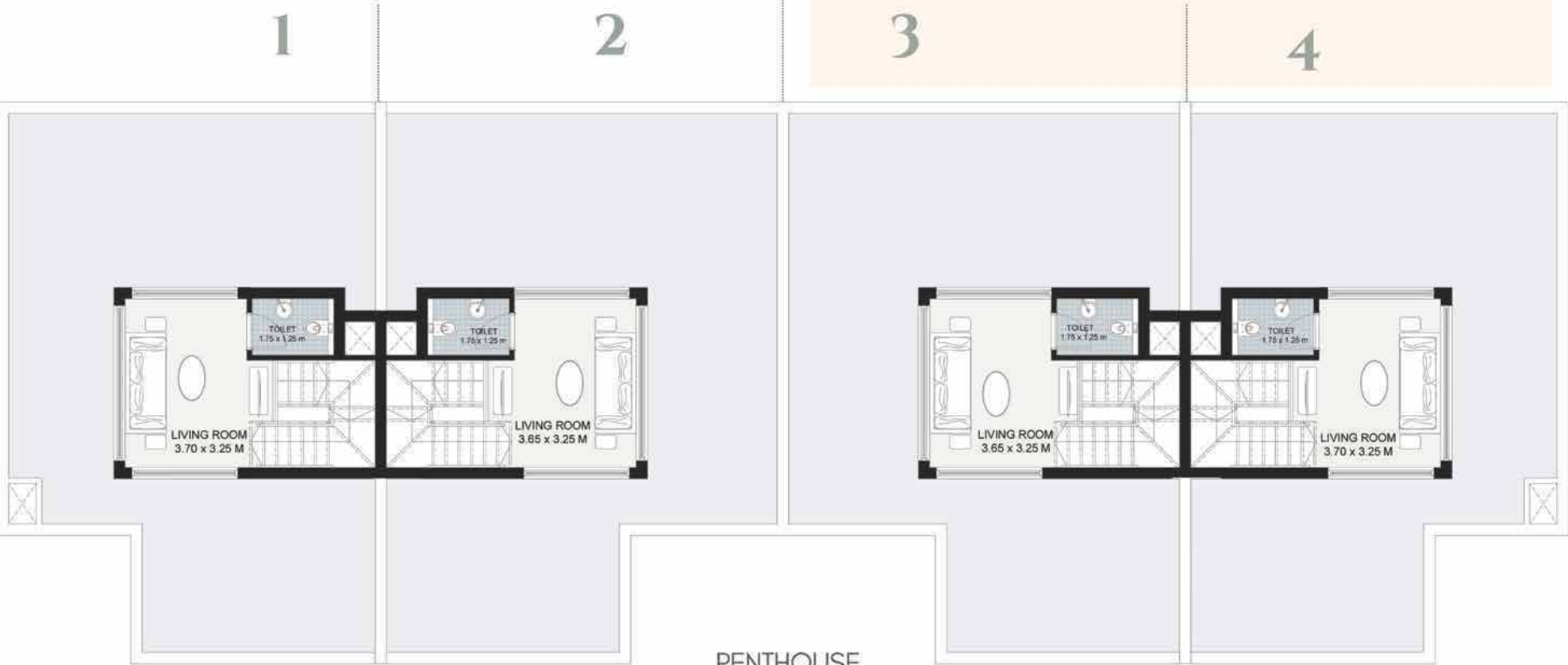


FIRST FLOOR
CORNER: 92 SQM
MIDDLE: 79 SQM

TOWNHOUSE

ROOF

AREA	CORNER 200 M2 MIDDLE 175M2
# OF BEDROOMS	3 BEDROOM



PENTHOUSE
CORNER: 24 SQM
MIDDLE: 24 SQM

TOWNHOUSE - F



Mar Bay
Ras El Hekma

- All renderings and visuals are for demonstrative purposes only.
- Dimensions may vary within an acceptable tolerance.
- The developer retains the right to make necessary alterations to the Master Layout for the benefit of the project.
- Images of furniture, wall cladding and all interior decoration are artistic and are for display purposes only.

TOWNHOUSE - F



Mar Bay
Ras El Hekma

- All renderings and visuals are for demonstrative purposes only.
- Dimensions may vary within an acceptable tolerance.
- The developer retains the right to make necessary alterations to the Master Layout for the benefit of the project.
- Images of furniture, wall cladding and all interior decoration are artistic and are for display purposes only.

TOWNHOUSE - F

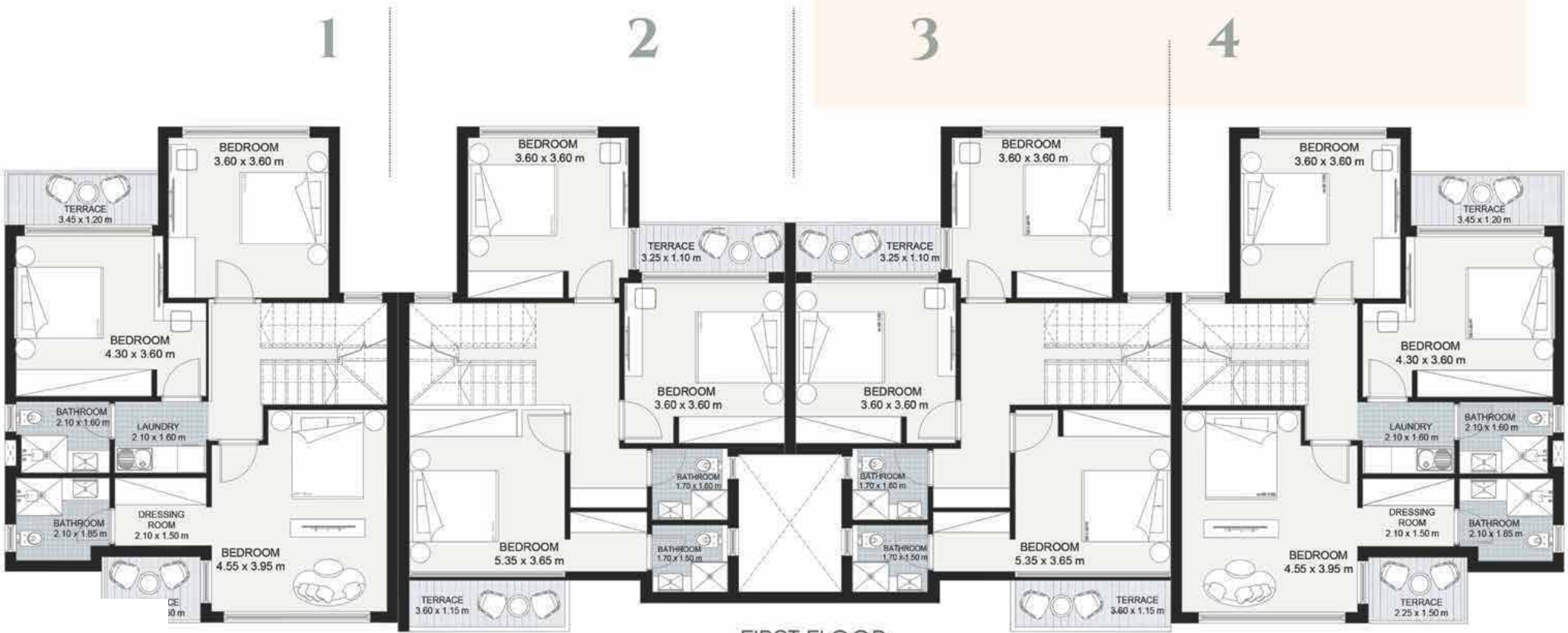


TOWNHOUSE - F



TOWNHOUSE - F

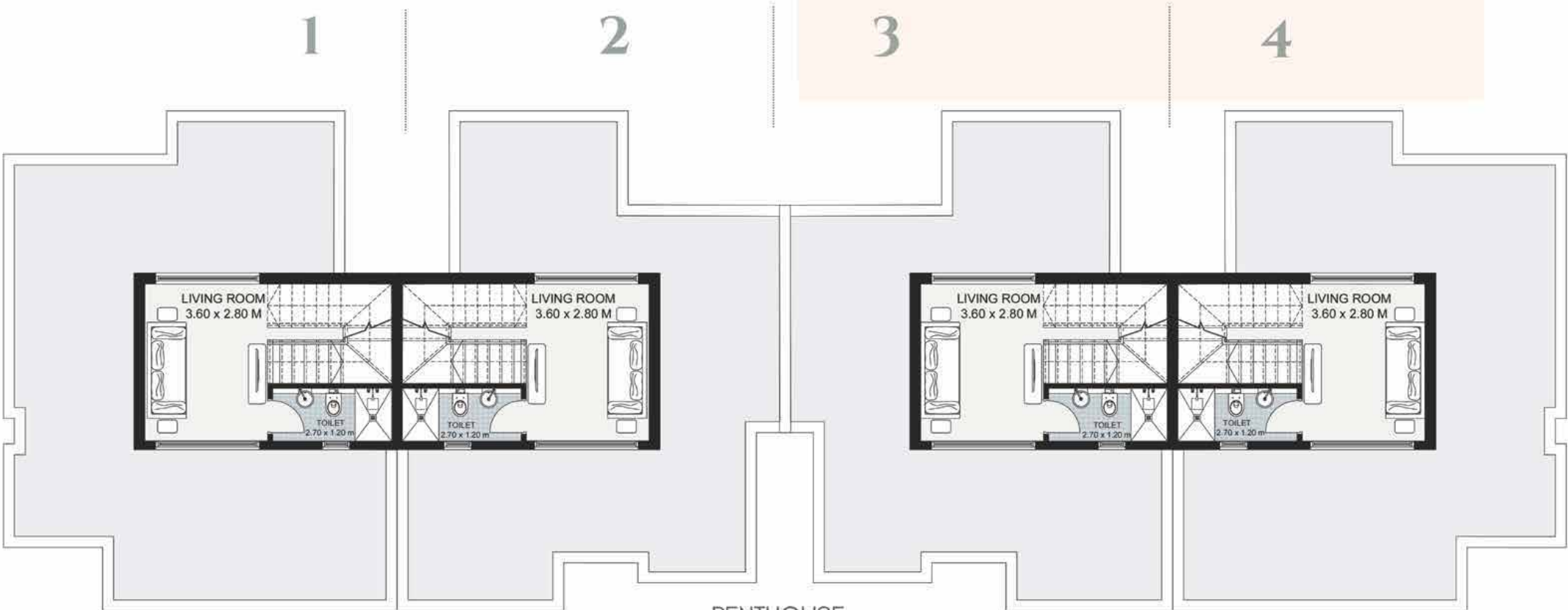
FIRST



FIRST FLOOR
CORNER: 87 SQM
MIDDLE: 79 SQM

TOWNHOUSE - F

ROOF



PENTHOUSE
CORNER: 24 SQM
MIDDLE: 24 SQM



• All renderings and visuals are for demonstrative purposes only.
• Dimensions may vary within an acceptable tolerance.
• The developer retains the right to make necessary alterations to the Master Layout for the benefit of the project.
• Images of furniture, wall cladding and all interior decoration are artistic and are for display purposes only.



• All renderings and visuals are for demonstrative purposes only.
• Dimensions may vary within an acceptable tolerance.
• The developer retains the right to make necessary alterations to the Master Layout for the benefit of the project.
• Images of furniture, wall cladding and all interior decoration are artistic and are for display purposes only.

TOWNHOUSE - F

GROUND

AREA
CORNER 200 M2
MIDDLE 175M2

OF BEDROOMS
3 BEDROOM



GROUND FLOOR
CORNER: 89 SQM
MIDDLE: 72 SQM



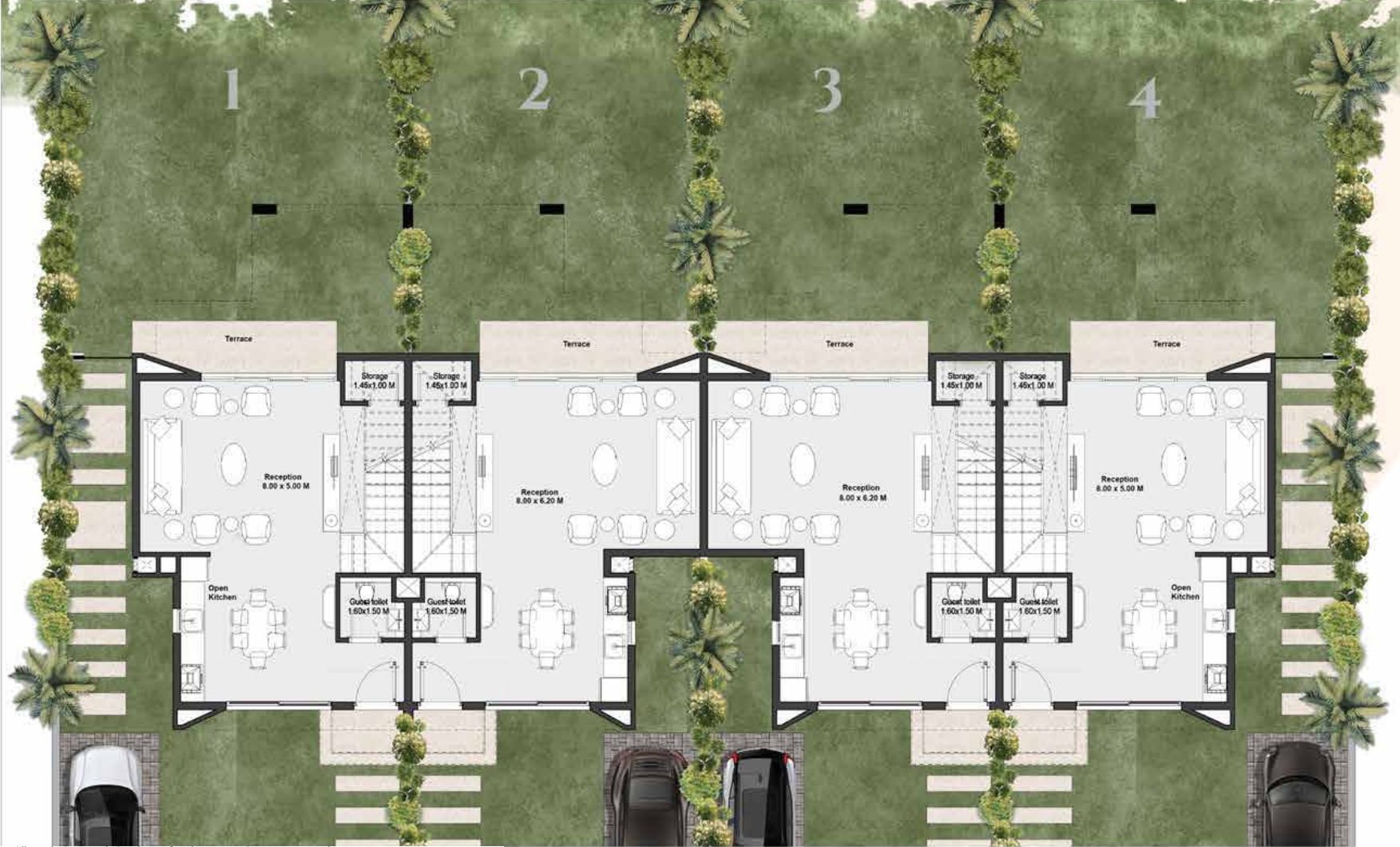
• All renderings and visuals are for demonstrative purposes only.
• Dimensions may vary within an acceptable tolerance.
• The developer retains the right to make necessary alterations to the Master Layout for the benefit of the project.
• Images of furniture, wall cladding and all interior decoration are artistic and are for display purposes only.

TOWNHOUSE NEW - F

GROUND

AREA
CORNER 155 M2
MIDDLE 155 M2

OF BEDROOMS
3 BEDROOM



• All renderings and visuals are for demonstrative purposes only.
• Dimensions may vary within an acceptable tolerance.
• The developer retains the right to make necessary alterations to the Master Layout for the benefit of the project.
• Images of furniture, wall cladding and all interior decoration are artistic and are for display purposes only.

TOWNHOUSE NEW - F

GROUND CORNER

AREA 155 M2

OF BEDROOMS 3 BEDROOMS

RECEPTION 8.00 X 5.00 M

GUEST TOILET 1.60 X 1.50 M



TOWNHOUSE NEW - F

GROUND MIDDLE

AREA 155 M2

OF BEDROOMS 3 BEDROOMS

RECEPTION 8.00 X 6.20 M

GUEST TOILET 1.60 X 1.50 M



TOWNHOUSE NEW - F

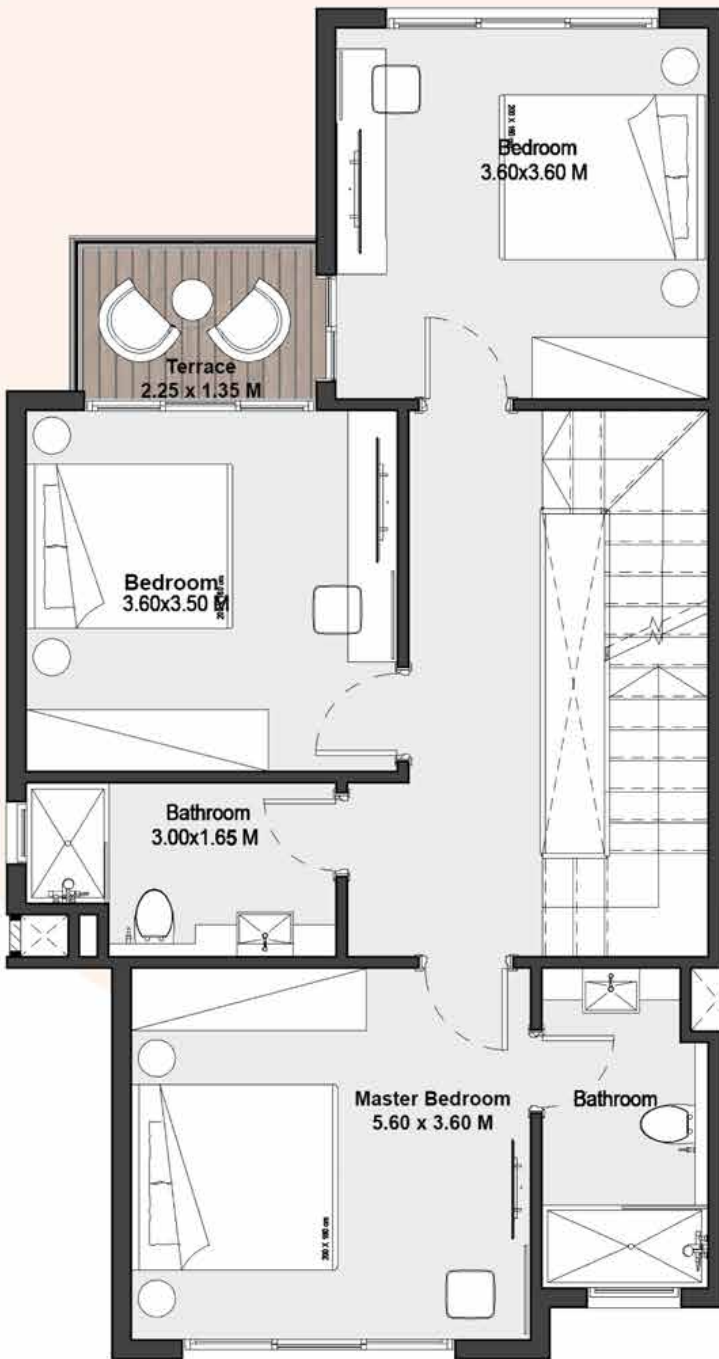
FIRST



AREA	CORNER 155 M2
	MIDDLE 155 M2
# OF BEDROOMS	3 BEDROOM

TOWNHOUSE NEW - F

FIRST CORNER



AREA	155 M2
# OF BEDROOMS	3 BEDROOMS

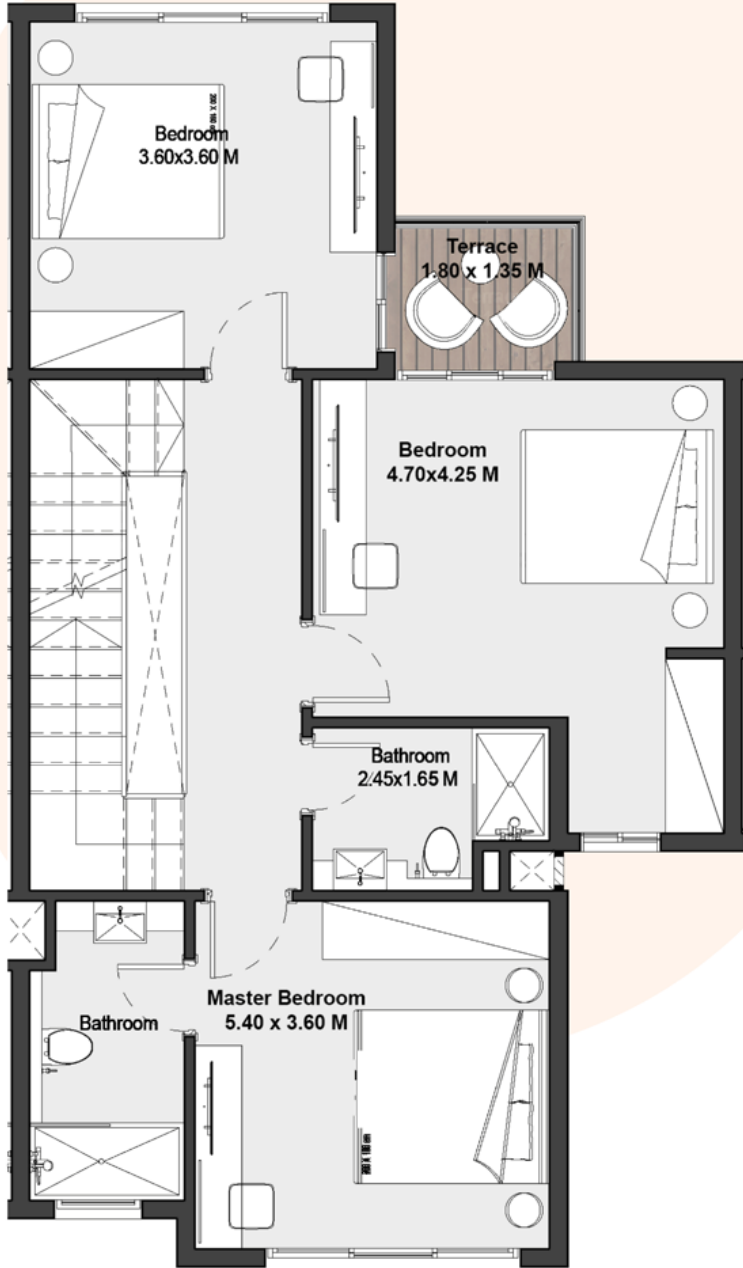
MASTER BEDROOM	5.60 X 3.60 M
BATHROOM	3.00 X 1.65 M
BEDROOM	3.60 X 3.50 M
BEDROOM	3.60 X 3.60 M
TERRACE	2.25 X 1.35 M

TOWNHOUSE NEW - F

FIRST MIDDLE

AREA 155 M2
OF BEDROOMS 3 BEDROOMS

MASTER NEDRRROM	5.40 X 3.60 M
BATHROOM	2.45 X 1.65 M
BEDROOM	4.70 X 4.25 M
BEDROOM	3.60 X 3.60 M
TERRACE	1.80 X 1.35 M



TOWNHOUSE NEW - F

ROOF

AREA
OF BEDROOMS
CORNER 155 M2
MIDDLE 155 M2
3 BEDROOM



TOWNHOUSE NEW - F

ROOF CORNER

AREA 155 M2

OF BEDROOMS 3 BEDROOMS

OPEN TERRACE AREA 63 M2

TOILET 2.00 X 1.00 M



TOWNHOUSE NEW - F

ROOF MIDDLE

AREA 155 M2

OF BEDROOMS 3 BEDROOMS

OPEN TERRACE AREA 62.5 M2

TOILET 2.00 X 1.00 M





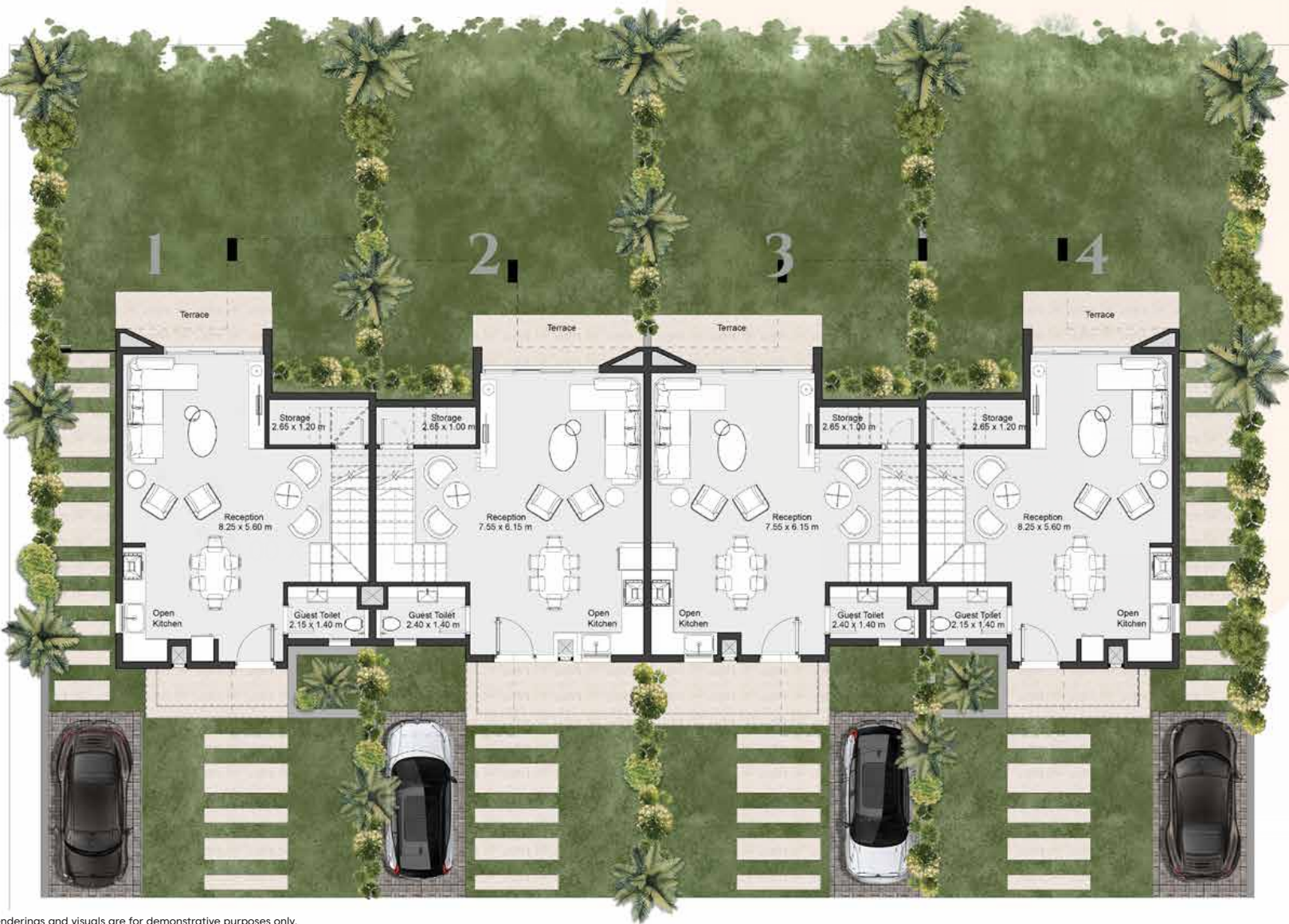
TOWNHOUSE NEW



All renderings and visuals are for demonstrative purposes only.
Dimensions may vary within an acceptable tolerance.
The developer retains the right to make necessary alterations to the Master Layout for the benefit of the project.
Images of furniture, wall cladding and all interior decoration are artistic and are for display purposes only.

TOWNHOUSE NEW GROUND

AREA	CORNER 155 M2
	MIDDLE 155 M2
# OF BEDROOMS	3 BEDROOMS



All renderings and visuals are for demonstrative purposes only.
Dimensions may vary within an acceptable tolerance.
The developer retains the right to make necessary alterations to the Master Layout for the benefit of the project.
Images of furniture, wall cladding and all interior decoration are artistic and are for display purposes only.

TOWNHOUSE NEW

GROUND CORNER

AREA 155 M2

OF BEDROOMS 3 BEDROOMS

RECEPTION	8.25 X 5.60 M
STORAGE	2.65 X 1.20 M
GUEST TOILET	2.15 X 1.40 M



TOWNHOUSE NEW

GROUND MIDDLE

AREA 155 M2

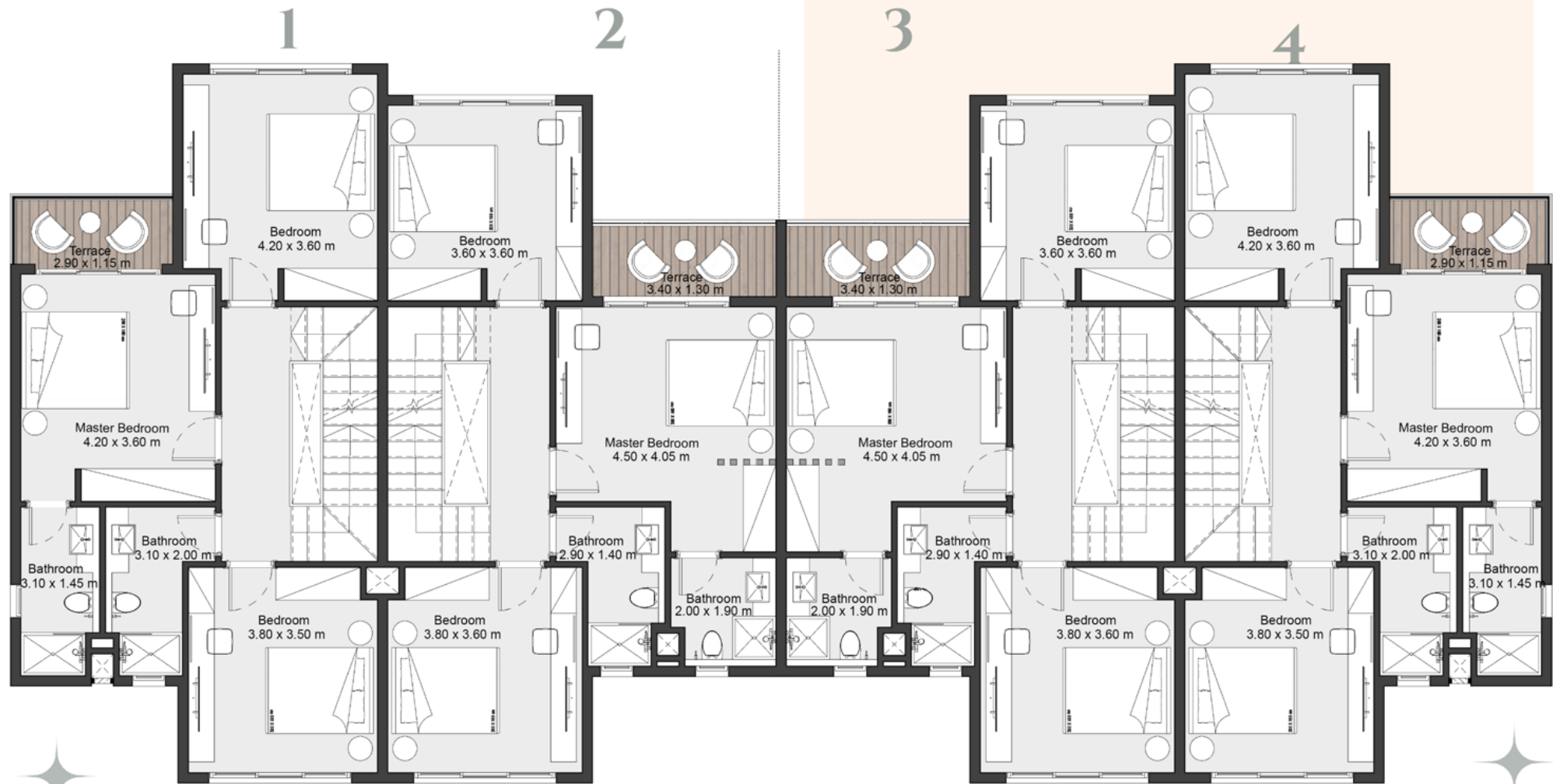
OF BEDROOMS 3 BEDROOMS

RECEPTION	7.55 X 6.15 M
STORAGE	2.65 X 1.00 M
GUEST TOILET	2.40 X 1.40 M



TOWNHOUSE NEW

FIRST



AREA

OF BEDROOMS

CORNER 155 M2
MIDDLE 155 M2
3 BEDROOMS

TOWNHOUSE NEW

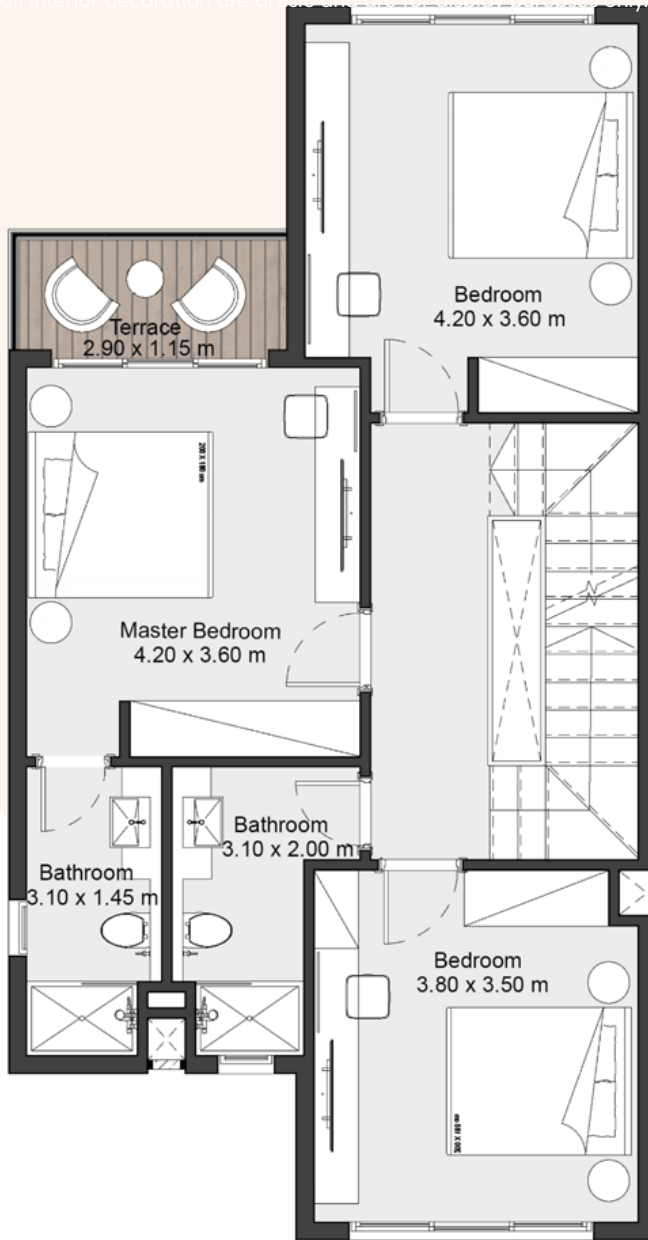
FIRST CORNER

AREA

OF BEDROOMS

155 M2
3 BEDROOMS

MASTER BEDROOM	4.20 X 3.60 M
BATHROOM	3.10 X 1.45 M
BEDROOM	4.20 X 3.60 M
BATHROOM	3.10 X 2.00 M
BEDROOM	3.80 X 3.50 M
TERRACE	2.90 X 1.15 M



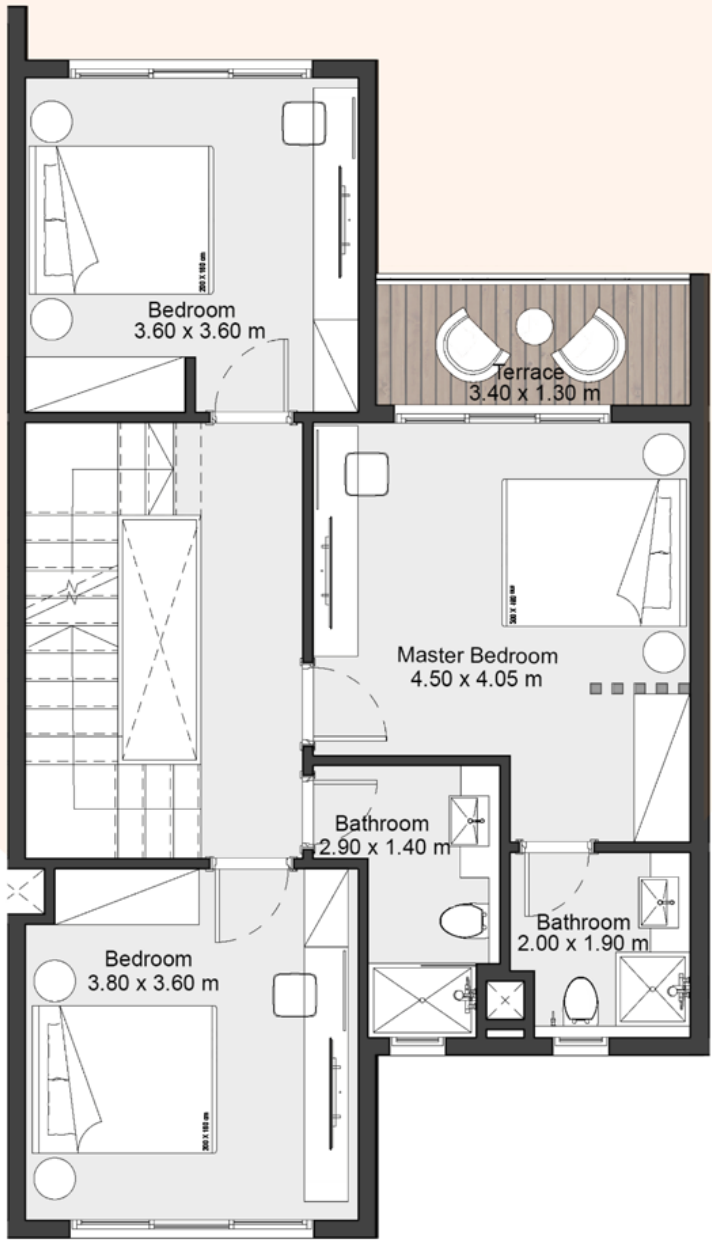
TOWNHOUSE NEW

FIRST MIDDLE

AREA 155 M2

OF BEDROOMS 3 BEDROOMS

MASTER BEDROOM	4.50 X 4.05 M
BATHROOM	2.00 X 1.90 M
BEDROOM	3.60 X 3.60 M
BATHROOM	2.90 X 1.40 M
BEDROOM	3.80 X 3.60 M
TERRACE	3.40 X 1.30 M



TOWNHOUSE NEW

ROOF

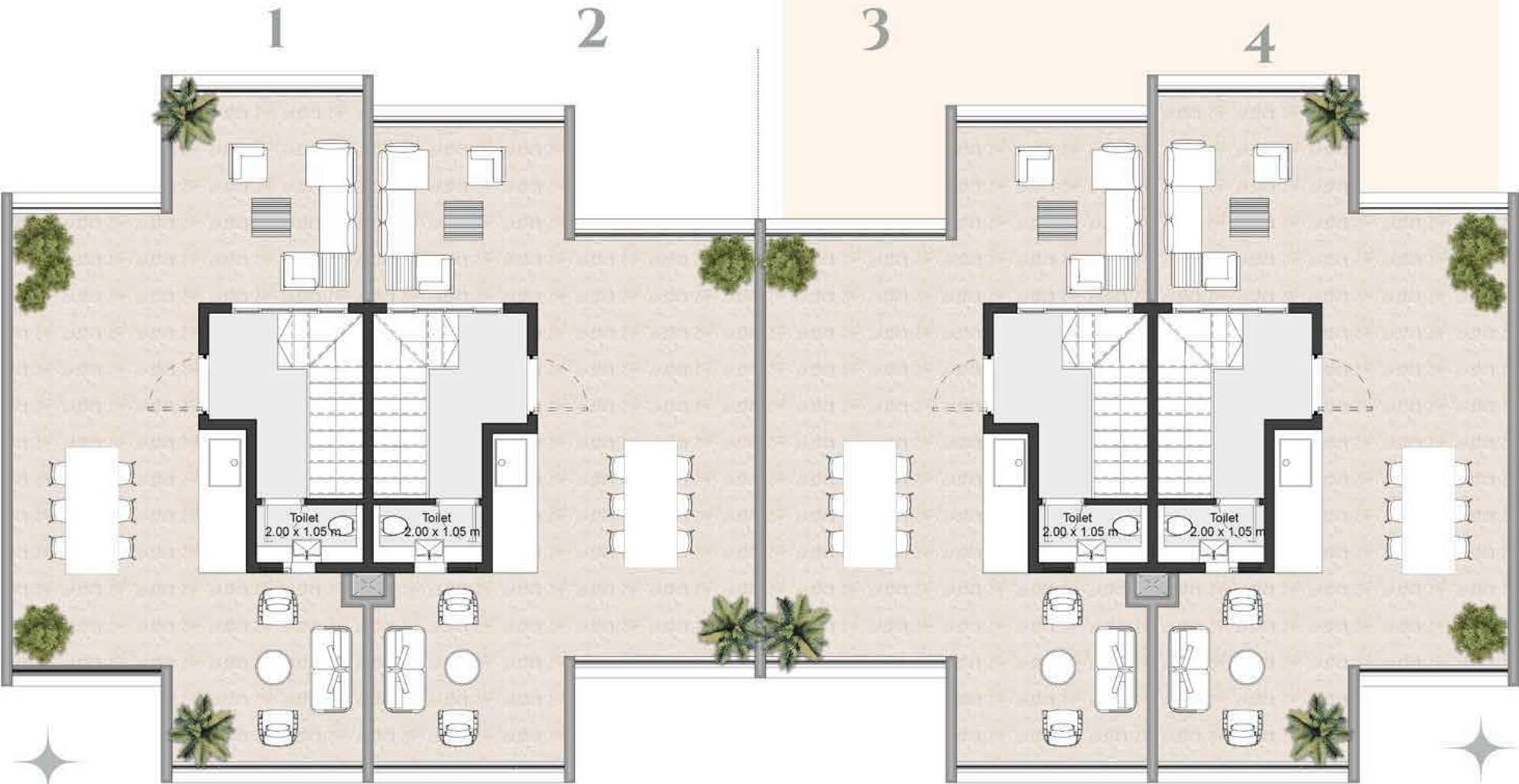
AREA

OF BEDROOMS

CORNER 155 M2

MIDDLE 155 M2

3 BEDROOMS



TOWNHOUSE NEW

ROOF CORNER

AREA	155 M2
# OF BEDROOMS	3 BEDROOMS
OPEN TERRACE AREA	63.7 M2

TOILET | 2.00 X 1.05 M



TOWNHOUSE NEW

ROOF MIDDLE

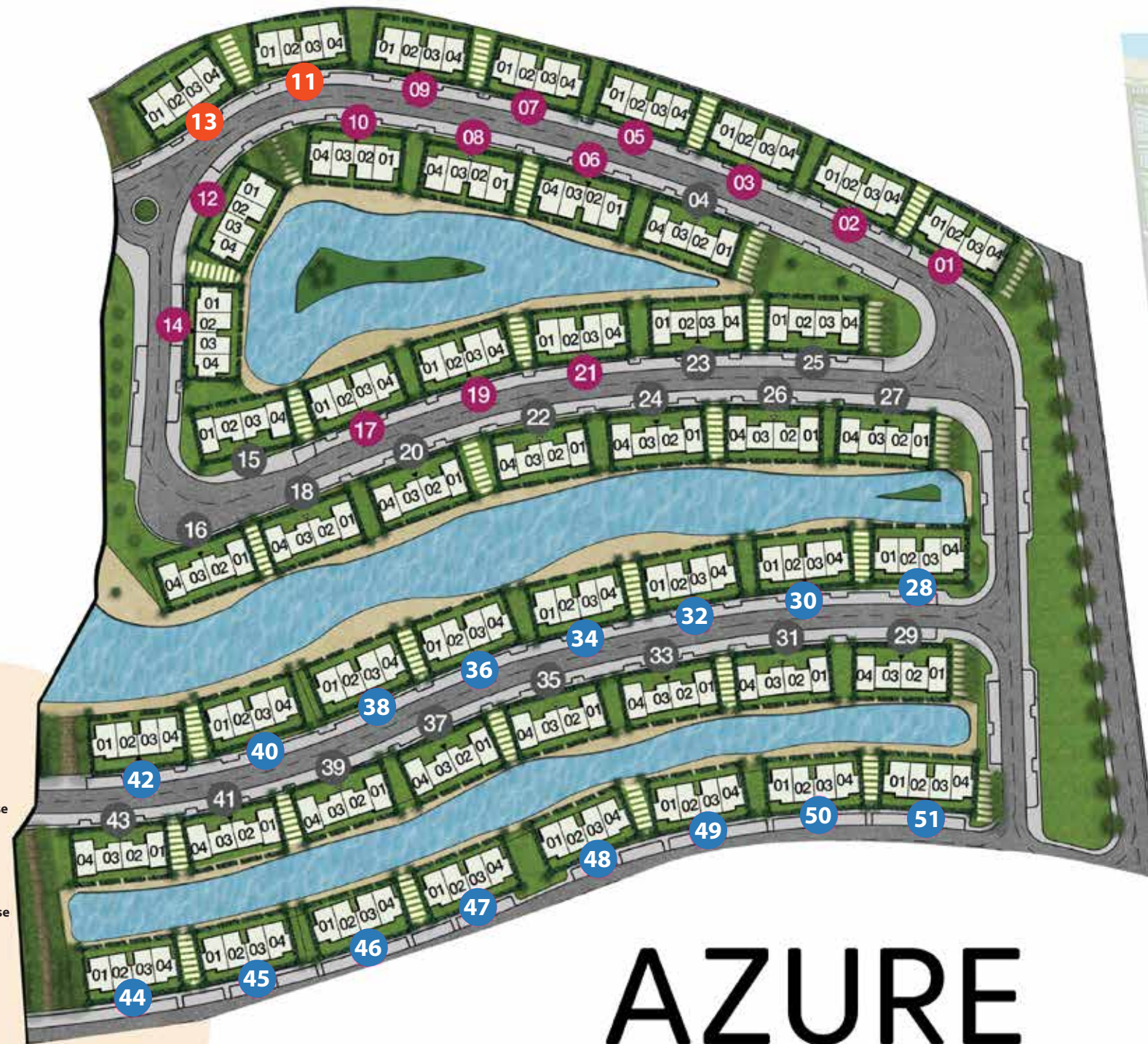
AREA	155 M2
# OF BEDROOMS	3 BEDROOMS
OPEN TERRACE AREA	63 M2

TOILET | 2.00 X 1.05 M





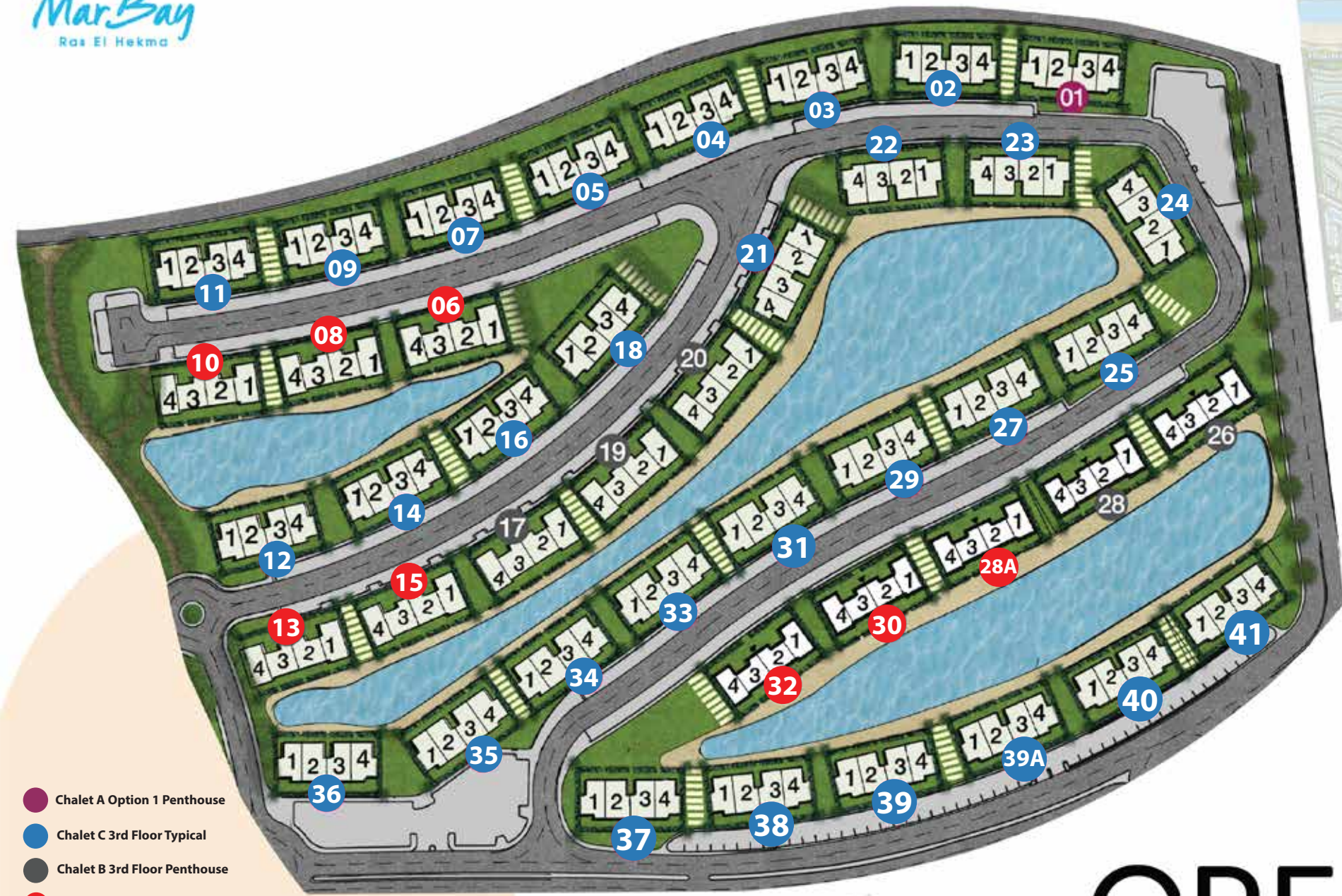
CHALETS



AZURE



AZURE WEST



CREST



CREST WEST

CHALET - A



CHALET - A





CHALET - A

Mar Bay
Ras El Mekma

- All renderings and visuals are for demonstrative purposes only.
- Dimensions may vary within an acceptable tolerance.
- The developer retains the right to make necessary alterations to the Master Layout for the benefit of the project.
- Images of furniture, wall cladding and all interior decoration are artistic and are for display purposes only.



CHALET - A

Mar Bay
Ras El Mekma

- All renderings and visuals are for demonstrative purposes only.
- Dimensions may vary within an acceptable tolerance.
- The developer retains the right to make necessary alterations to the Master Layout for the benefit of the project.
- Images of furniture, wall cladding and all interior decoration are artistic and are for display purposes only.

CHALET - A



104
A

105
A

106
A

107
A

108
A

109
A

110
A

111
A

112
A

113
A

114
A

115
A

116
A

117
A

118
A

119
A

120
A

121
A

122
A

123
A

124
A

125
A

126
A

127
A

128
A

129
A

130
A

131
A

132
A

133
A

134
A

135
A

136
A

137
A

138
A

139
A

140
A

141
A

142
A

143
A

144
A

145
A

146
A

147
A

148
A

149
A

150
A

151
A

152
A

153
A

154
A

155
A

156
A

157
A

158
A

159
A

160
A

161
A

162
A

163
A

164
A

165
A

166
A

167
A

168
A

169
A

170
A

171
A

172
A

173
A

174
A

175
A

176
A

177
A

178
A

179
A

180
A

181
A

182
A

183
A

184
A

185
A

186
A

187
A

188
A

189
A

190
A

191
A

192
A

193
A

194
A

195
A

196
A

197
A

198
A

199
A

200
A

201
A

202
A

203
A

204
A

205
A

206
A

207
A

208
A

209
A

210
A

211
A

212
A

213
A

214
A

215
A

216
A

217
A

218
A

219
A

220
A

221
A

222
A

223
A

224
A

225
A

226
A

227
A

228
A

229
A

230
A

231
A

232
A

233
A

234
A

235
A

236
A

237
A

238
A

239
A

240
A

241
A

242
A

243
A

244
A

245
A

246
A

247
A

248
A

249
A

250
A

251
A

252
A

253
A

254
A

255
A

256
A

257
A

258
A

259
A

260
A

261
A

262
A

263
A

264
A

265
A

266
A

267
A

268
A

269
A

270
A

271
A

272
A

273
A

274
A

275
A

276
A

277
A

278
A

279
A

280
A

281
A

282
A

283
A

284
A

285
A

286
A

287
A

288
A

289
A

290
A

291
A

292
A

293
A

294
A

295
A

296
A

297
A

298
A

299
A

300
A

301
A

302
A

303
A

304
A

305
A

306
A

307
A

308
A

309
A

310
A

311
A

312
A

313
A

314
A

315
A

316
A

317
A

318
A

319
A

320
A

321
A

322
A

323
A

324
A

325
A

326
A

327
A

328
A

329
A

330
A

331
A

332
A

333
A

334
A

335
A

336
A

337
A

338
A

339
A

340
A

341
A

342
A

343
A

344
A

345
A

346
A

347
A

348
A

349
A

350
A

351
A

352
A

353
A

354
A

355
A

356
A

357
A

358
A

359
A

360
A

361
A

362
A

363
A

364
A

365
A

366
A

367
A

368
A

369
A

370
A

371
A

372
A

373
A

374
A

375
A

376
A

377
A

378
A

379
A

380
A

381
A

382
A

383
A

384
A

385
A

386
A

387
A

388
A

389
A

390
A

391
A

392
A

393
A

394
A

395
A

396
A

397
A

398
A

399
A

400
A

401
A

402
A

403
A

404
A

405
A

406
A

407
A

408
A

409
A

410
A

411
A

412
A

413
A

414
A

415
A

416
A

417
A

418
A

419
A

420
A

421
A

422
A

423
A

424
A

425
A

426
A

427
A

428
A

429
A

430
A

431
A

432
A

433
A

434
A

435
A

436
A

437
A

438
A

439
A

440
A

441
A

442
A

443
A

444
A

445
A

446
A

447
A

448
A

449
A

450
A

451
A

452
A

453
A

454
A

455
A

456
A

457
A

458
A

459
A

460
A

461
A

462
A

463
A

464
A

465
A

466
A

467
A

468



CHALET - A



102
101
11

Mar Bay
Ras El Hekma

- All renderings and visuals are for demonstrative purposes only.
- Dimensions may vary within an acceptable tolerance.
- The developer retains the right to make necessary alterations to the Master Layout for the benefit of the project.
- Images of furniture, wall cladding and all interior decoration are artistic and are for display purposes only.



CHALETs A - OPTIOPN 1

GROUND

G01	141M2
G02	118M2
G03	118M2
G04	141M2



CHALETs A - OPTIOPN 1

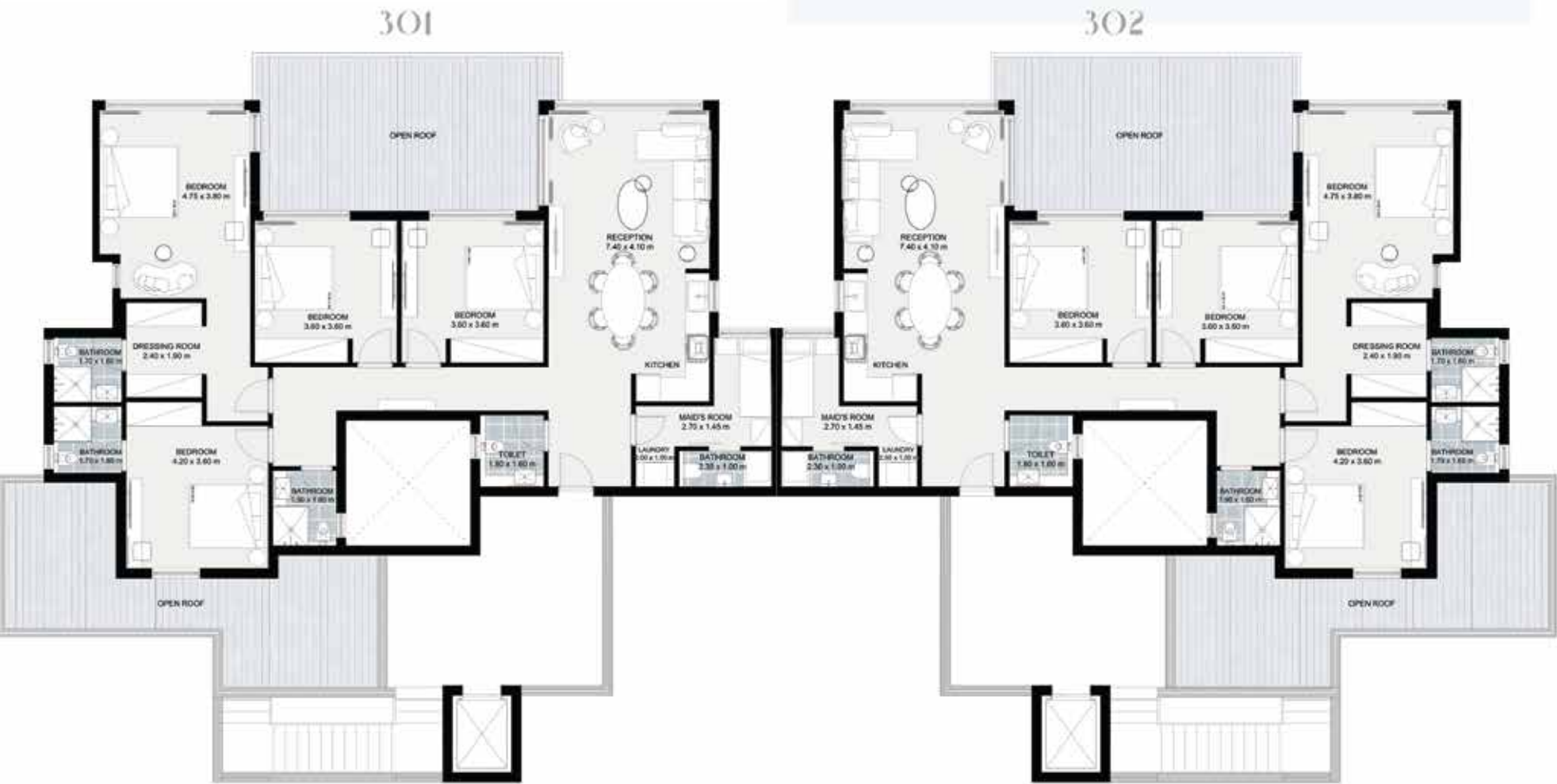
TYPICAL

101 - 201	152M2
102 - 202	128M2
103 - 203	128M2
104 - 204	152M2



CHALETs A - OPTIOPN 1

PENTHOUSE



301 190M2 + 50 M2 ROOF
302 190M2+ 50 M2 ROOF

CHALETs A - OPTIOPN 2

GROUND



G01 141M2
G02 118M2
G03 118M2
G04 141M2

CHALETs A - OPTIOPN 2

FIRST FLOOR

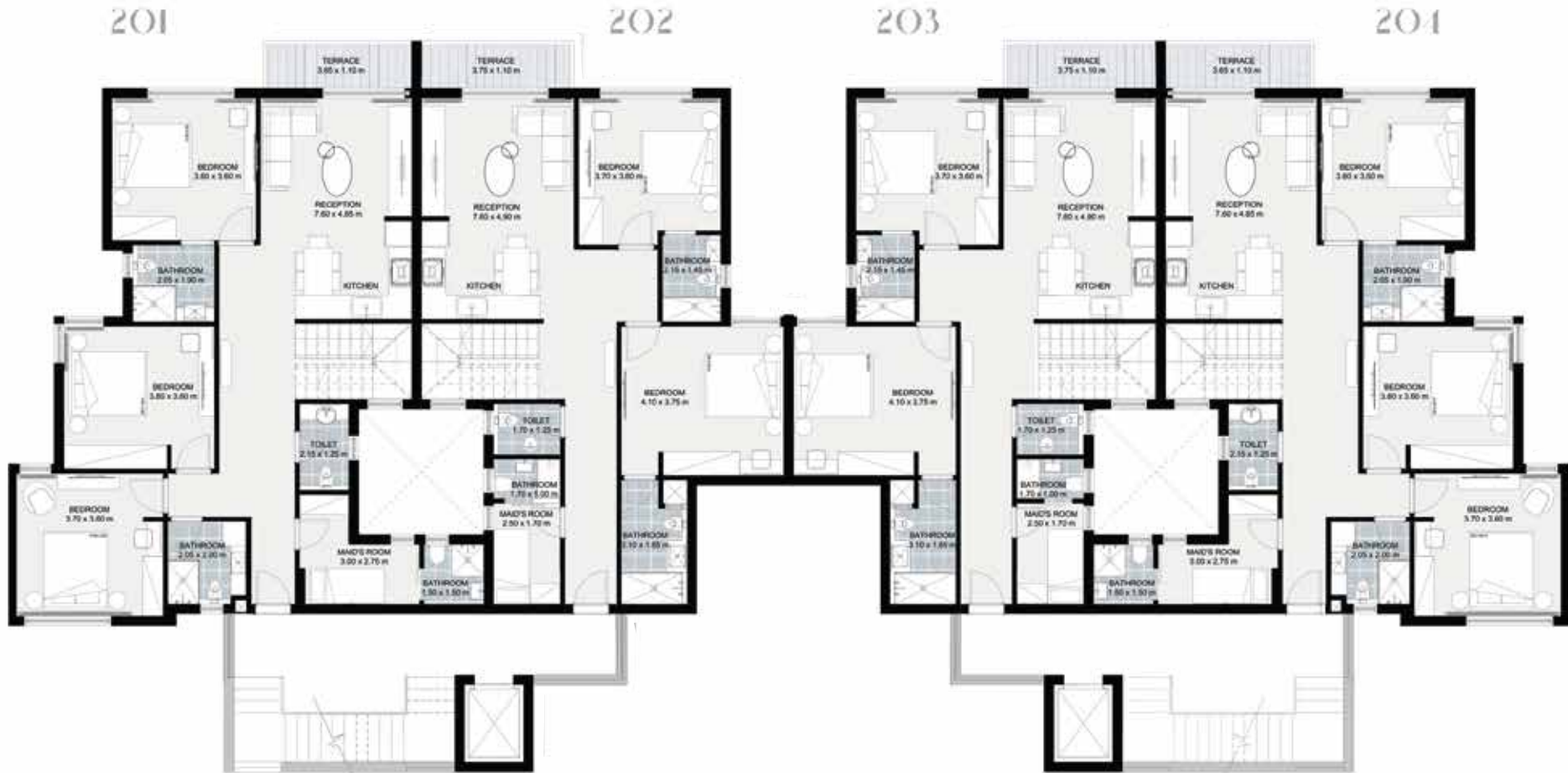
101	152M2
102	128M2
103	128M2
104	152M2



CHALETs A - OPTIOPN 2

DUPLEX - SECOND FLOOR

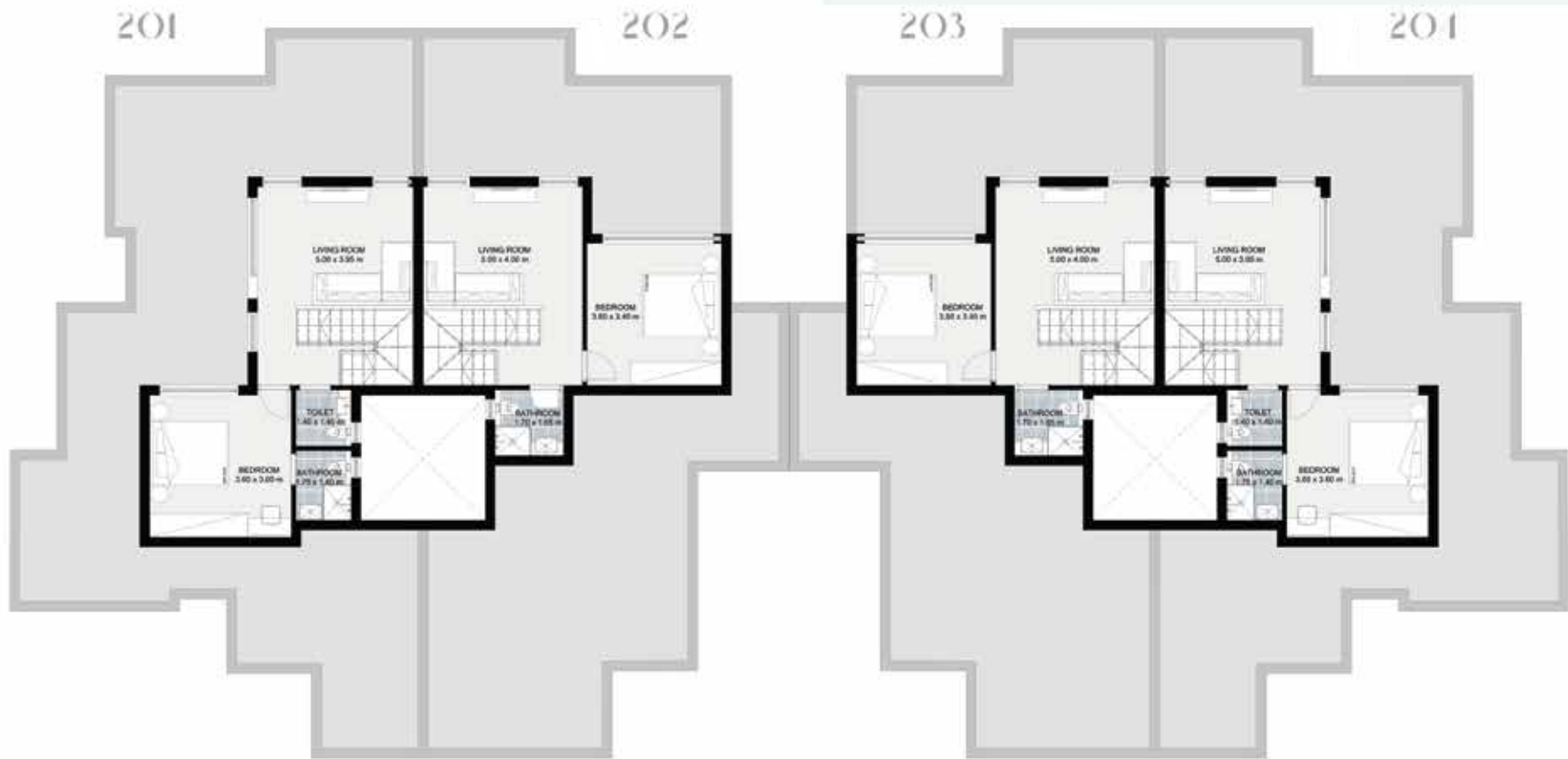
201	207 M2 + 69 M2 ROOF
202	181 M2 + 59 M2 ROOF
203	181 M2 + 59 M2 ROOF
204	207 M2 + 69 M2 ROOF



CHALETS A - OPTIOPN 2

DUPLEX -
PENTHOUSE

201	207 M2 + 69 M2 ROOF
202	181 M2 + 59 M2 ROOF
203	181 M2 + 59 M2 ROOF
204	207 M2 + 69 M2 ROOF



CHALET - B



All renderings and visuals are for demonstrative purposes only.
Dimensions may vary within an acceptable tolerance.
The developer retains the right to make necessary alterations to the Master Layout for the benefit of the project.
Images of furniture, wall cladding and all interior decoration are artistic and are for display purposes only.



All renderings and visuals are for demonstrative purposes only.
Dimensions may vary within an acceptable tolerance.
The developer retains the right to make necessary alterations to the Master Layout for the benefit of the project.
Images of furniture, wall cladding and all interior decoration are artistic and are for display purposes only.

CHALET - B



Mar Bay
Ras El Makma

- All renderings and visuals are for demonstrative purposes only.
- Dimensions may vary within an acceptable tolerance.
- The developer retains the right to make necessary alterations to the Master Layout for the benefit of the project.
- Images of furniture, wall cladding and all interior decoration are artistic and are for display purposes only.

CHALET - B



Mar Bay
Ras El Makma

- All renderings and visuals are for demonstrative purposes only.
- Dimensions may vary within an acceptable tolerance.
- The developer retains the right to make necessary alterations to the Master Layout for the benefit of the project.
- Images of furniture, wall cladding and all interior decoration are artistic and are for display purposes only.

CHALET - B



CHALETS B GROUND

G01	127M2
G02	98M2
G03	98M2
G04	127M2



• All renderings and visuals are for demonstrative purposes only.
• Dimensions may vary within an acceptable tolerance.
• The developer retains the right to make necessary alterations to the Master Layout for the benefit of the project.
• Images of furniture, wall cladding and all interior decoration are artistic and are for display purposes only.

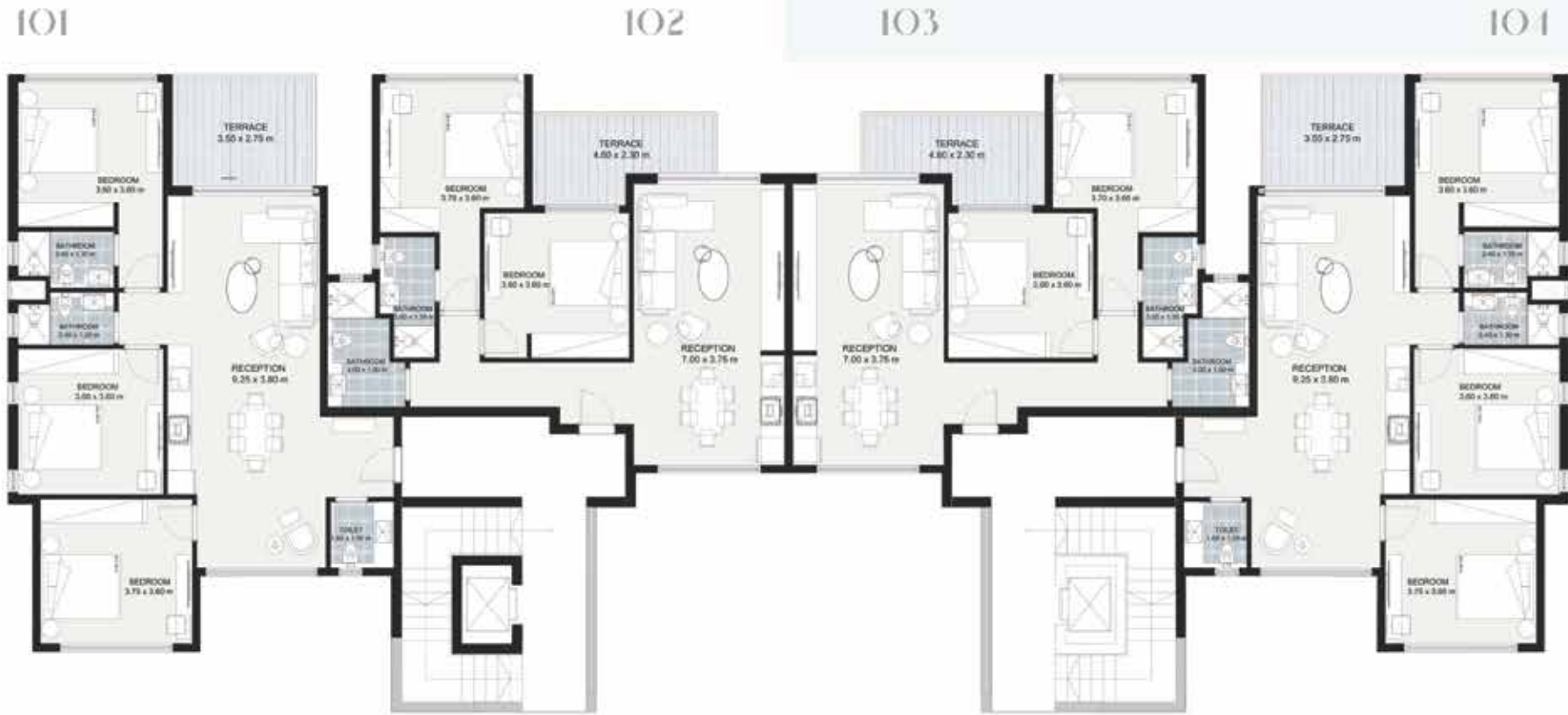


• All renderings and visuals are for demonstrative purposes only.
• Dimensions may vary within an acceptable tolerance.
• The developer retains the right to make necessary alterations to the Master Layout for the benefit of the project.
• Images of furniture, wall cladding and all interior decoration are artistic and are for display purposes only.

CHALETs B

TYPICAL FLOOR

101	140M2
102	110M2
103	110M2
104	140M2



CHALETs B

PENTHOUSE

301	165 M2 + 70 M2 ROOF
302	165 M2 + 70 M2 ROOF



CHALET - C



CHALET - C



CHALET - C



CHALET - C



CHALETS C

GROUND

G01	141M2
G02	118M2
G03	118M2
G04	141M2



CHALETS C

TYPICAL

101 - 201	152M2
102 - 202	128M2
103 - 203	128M2
104 - 204	152M2



CHALET - D



CHALET - D



CHALET - D



• All renderings and visuals are for demonstrative purposes only.
• Dimensions may vary within an acceptable tolerance.
• The developer retains the right to make necessary alterations to the Master Layout for the benefit of the project.
• Images of furniture, wall cladding and all interior decoration are artistic and are for display purposes only.

CHALET - D



• All renderings and visuals are for demonstrative purposes only.
• Dimensions may vary within an acceptable tolerance.
• The developer retains the right to make necessary alterations to the Master Layout for the benefit of the project.
• Images of furniture, wall cladding and all interior decoration are artistic and are for display purposes only.

CHALETs D

GROUND

G01	127M2
G02	98M2
G03	98M2
G04	127M2



CHALETs D

TYPICAL FLOOR

101	140M2
102	110M2
103	110M2
104	140M2

