



# TOWNHOMES

DISTRICT FIVE  
RESIDENCES



# WELCOME TO DISTRICT —

District Five is the result of MARAKEZ's firm belief that high-quality living is attainable and that you can find the lifestyle you wish to experience in your own homes. At District Five, you'll find everything from offices, sports, shopping, entertainment and more. We have built a suburban residential community with the qualities and convenience of urban living.

# DI5 - STRICT



# Five Journeys One Destination



JOURNEY  
N°1 | Live

JOURNEY  
N°2 | Play

JOURNEY  
N°3 | Grow

JOURNEY  
N°4 | Shop

JOURNEY  
N°5 | Work

# THE CLUBHOUSE



# clubfive

Amenities steps away from home

Clubfive is designed to be the living heart of District Five's residential community. Offering the ideal place for entertainment, sports, socialization, and relaxation; It's indoor facilities include a restaurant, TV lounge, multi-purpose hall, indoor gym, lounge area, squash courts and a terrace opening up to the outdoors area, which includes swimming pools, tennis courts, five-a-side football fields, paddle tennis courts, jogging track, multi-purpose court and kids play areas.



Restaurant



TV Lounge



Kids Playground



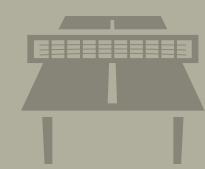
Leisure Pool



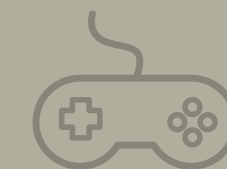
Kids Pool



Multi-Purpose Court



Activity Tables



Indoor Game Room



Sports Facilities

LOCATION  
& MASTERPLAN



# CONNECTIVITY

Connectivity has become an essential factor for our ability to get the most out of every single day. Through the construction of two major bridges crossing over Ain Sokhna Highway, MARAKEZ seamlessly connects District Five to New Cairo and its surrounding neighborhoods granting easy access to and from the project.



Road 90	7 min
AUC	8 min
Maadi	13 min
Airport	19 min
Heliopolis	30 min
Sokhna	45 min
Gouna	210 min

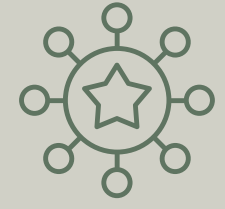
# MASTER PLAN



A 268-acre integrated mixed-use development offering the opportunity to experience five journeys in a single destination.



A variety of residential prototypes – garden apartments, twinhomes and townhomes.



A playful entertainment and leisure Lifestyle Centre on approximately 17,000 sqm of GLA.



A professional platform to grow at the Wellness facilities.



A state-of-the-art commercial area including offices and coworking spaces.



An international standard Shopping Centre on approximately 43,000 sqm of GLA.

# A CLOSER LOOK



TOWNHOMES











STOP

# TOWNHOMES-TCL

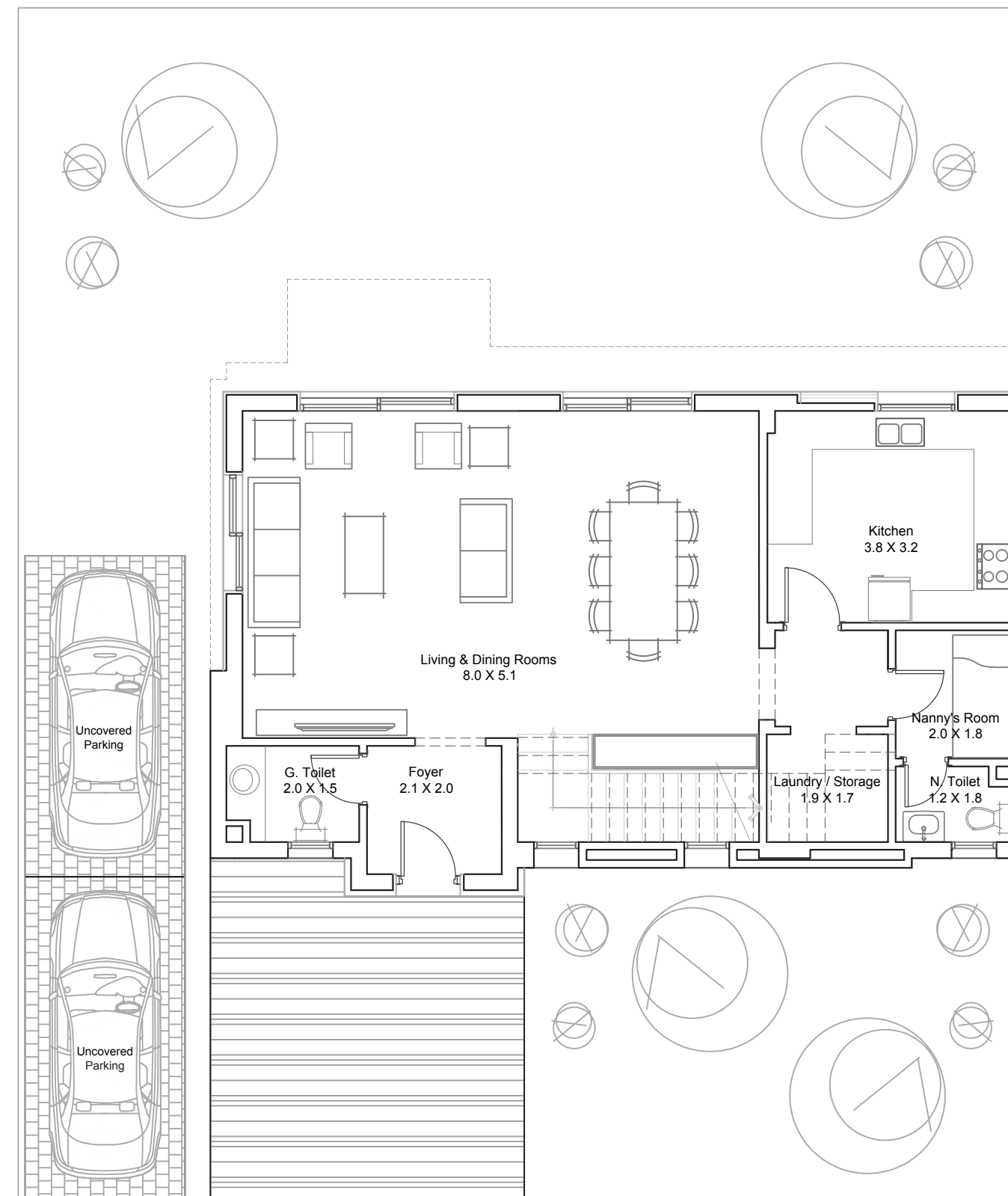
-  
GROSS AREA:  
243 SQM

-  
Ground Floor  
93 SQM

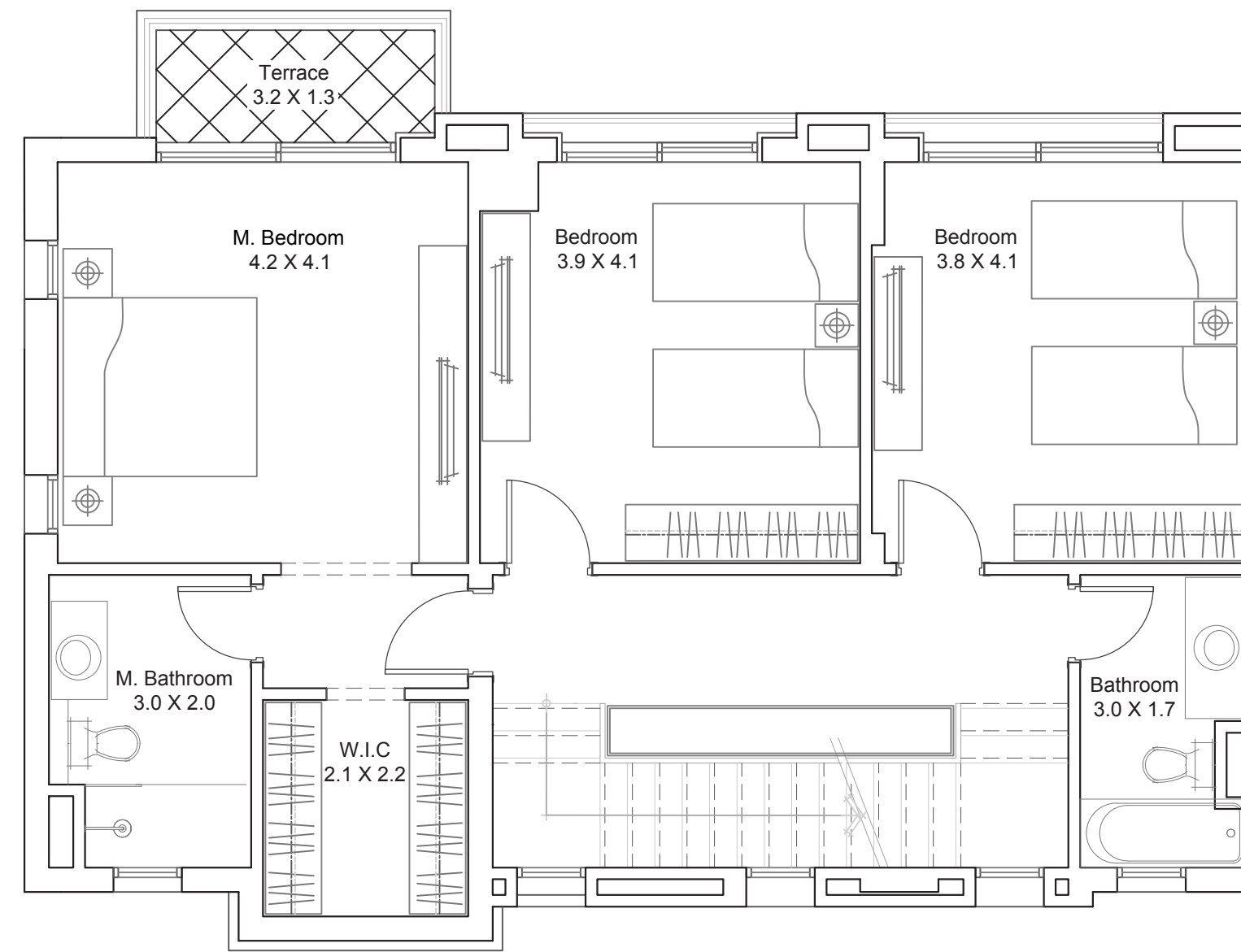
-  
First Floor  
106 SQM

-  
Roof Suite  
44 SQM

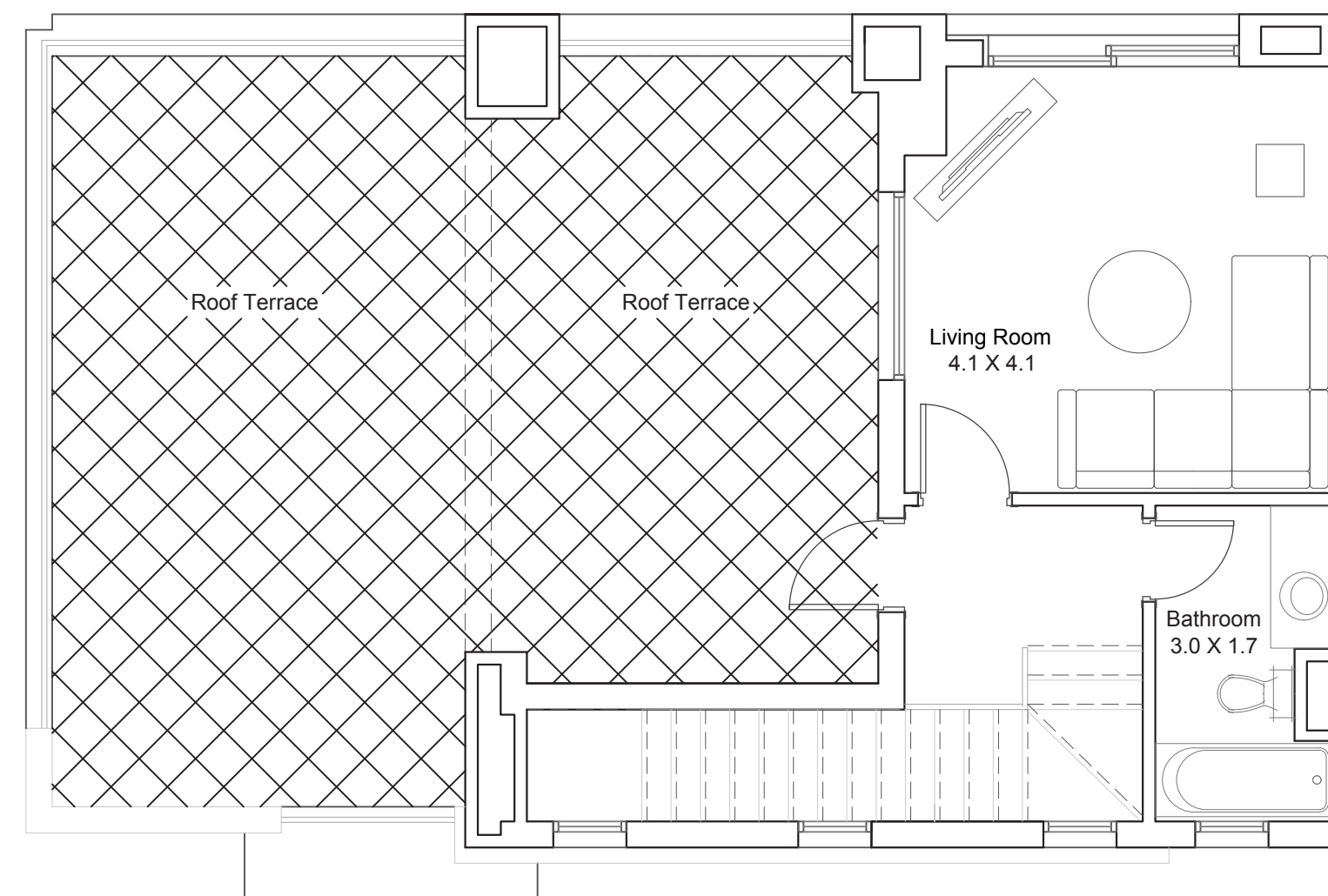
-  
Roof Terrace  
58 SQM



Ground Floor



First Floor



Second Floor

## UNIT COMPONENTS

-  
Ground Floor

Living Room  
Dining Room  
Kitchen  
Guest Toilet  
Ensuite Nanny's Room

-  
First Floor

Ensuite Master Bedroom  
2nd Bedroom  
3rd Bedroom  
Shared Bath  
Terrace

-  
Second Floor

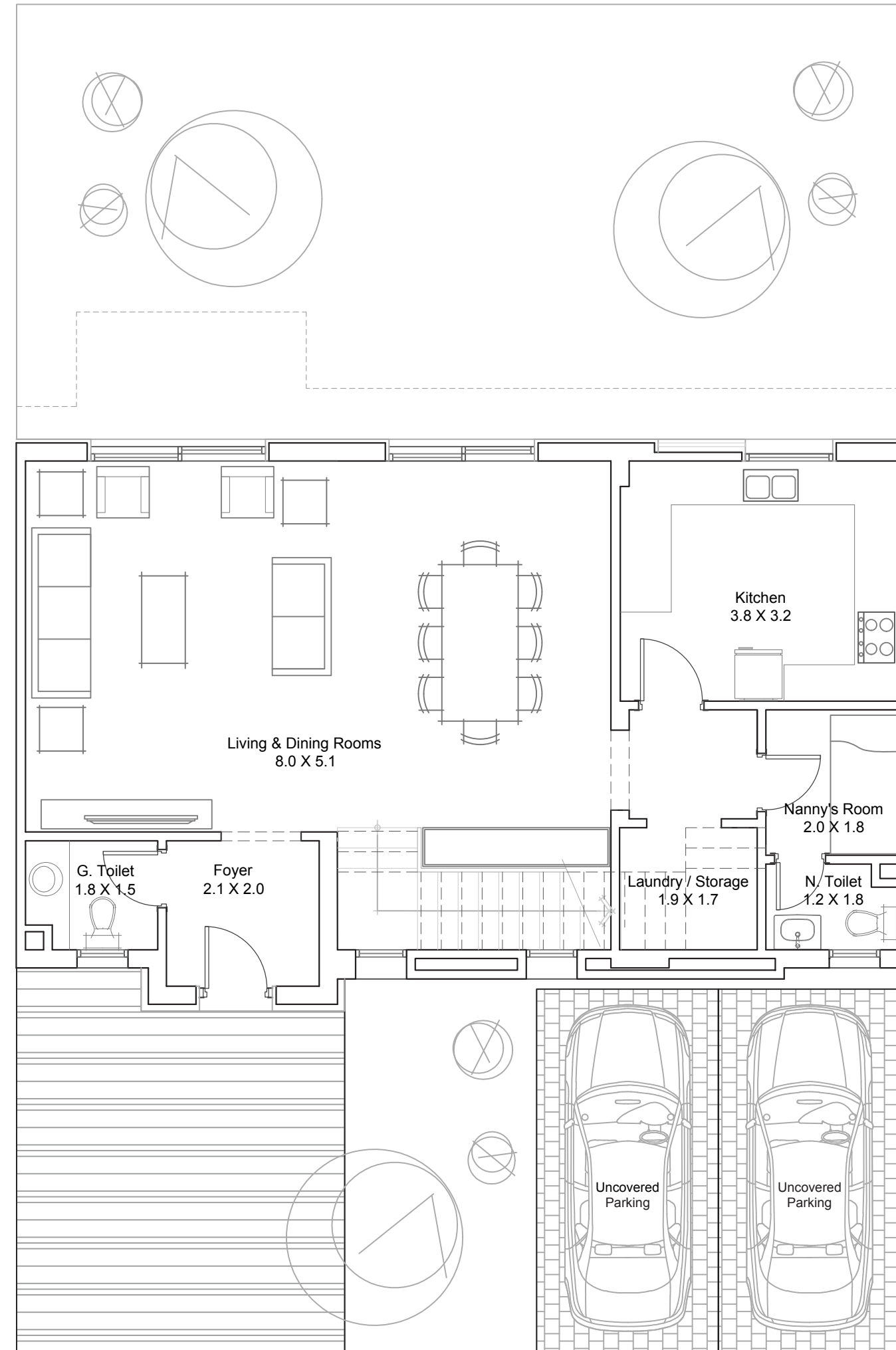
High Ceiling Living Room  
Shared Bath  
Roof Terrace

A B C D

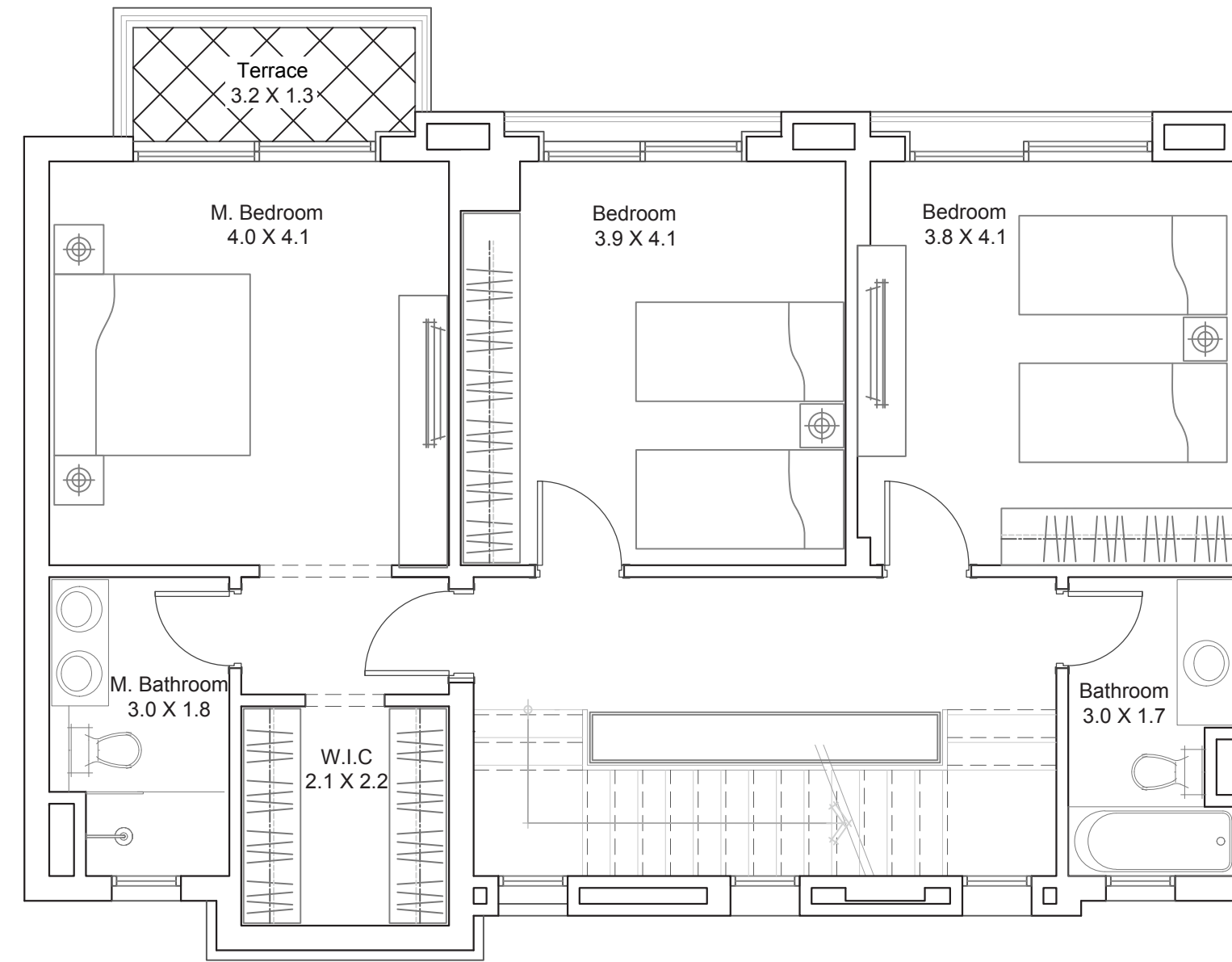
A B C

# TOWNHOMES-TML

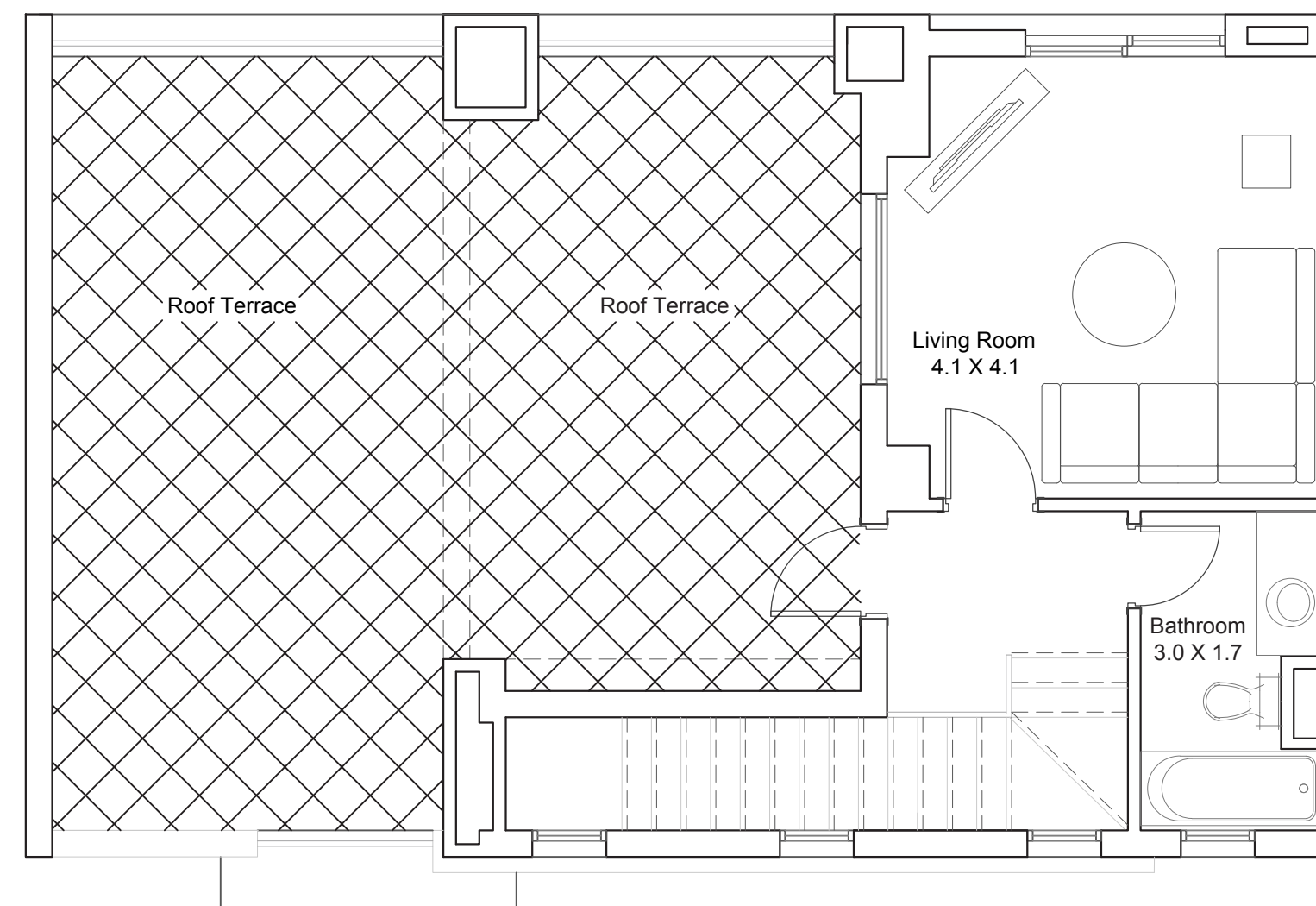
- 
- GROSS AREA: 238 SQM
- Ground Floor 91 SQM
- First Floor 103 SQM
- Roof Suite 44 SQM
- Roof Terrace 55 SQM



Ground Floor



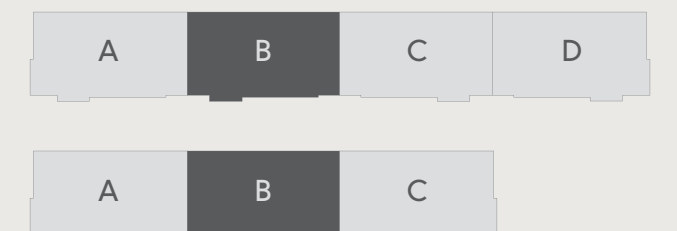
First Floor



Second Floor

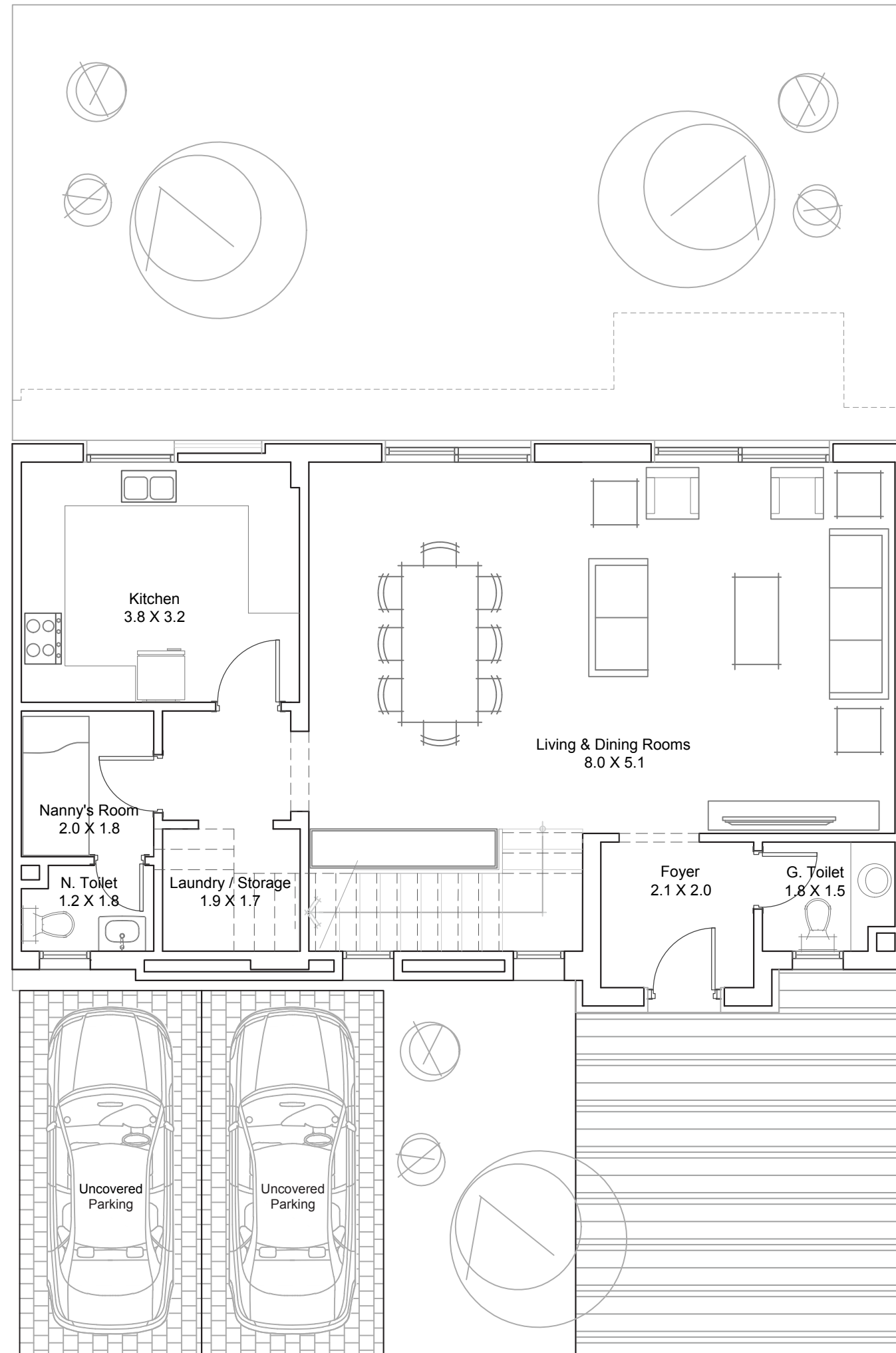
## UNIT COMPONENTS

- 
- Ground Floor
- Living Room
- Dining Room
- Kitchen
- Guest Toilet
- Ensuite Nanny's Room
- 
- First Floor
- Ensuite Master Bedroom
- 2nd Bedroom
- 3rd Bedroom
- Shared Bath
- Terrace
- 
- Second Floor
- High Ceiling Living Room
- Shared Bath
- Roof Terrace

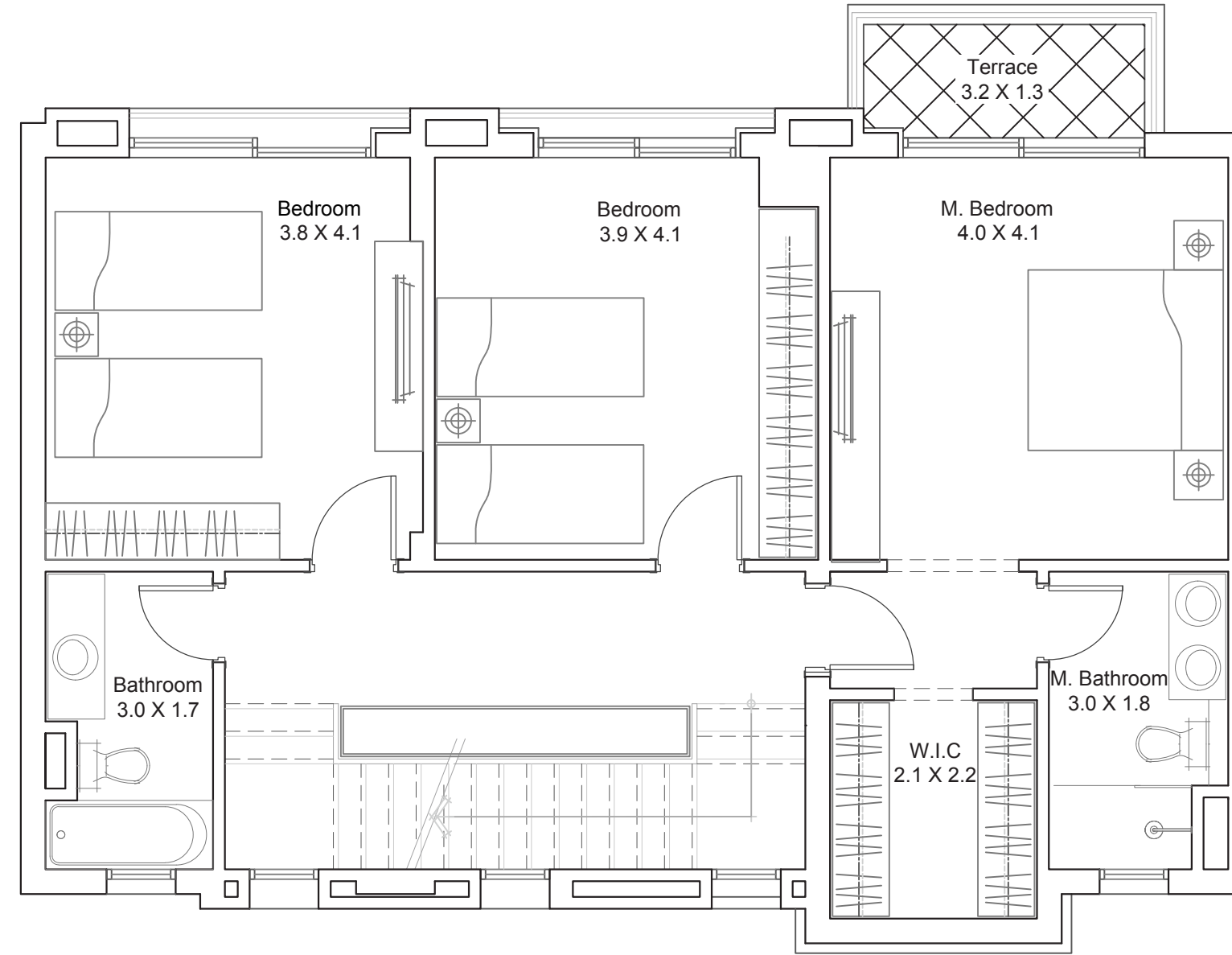


# TOWNHOMES-TMR

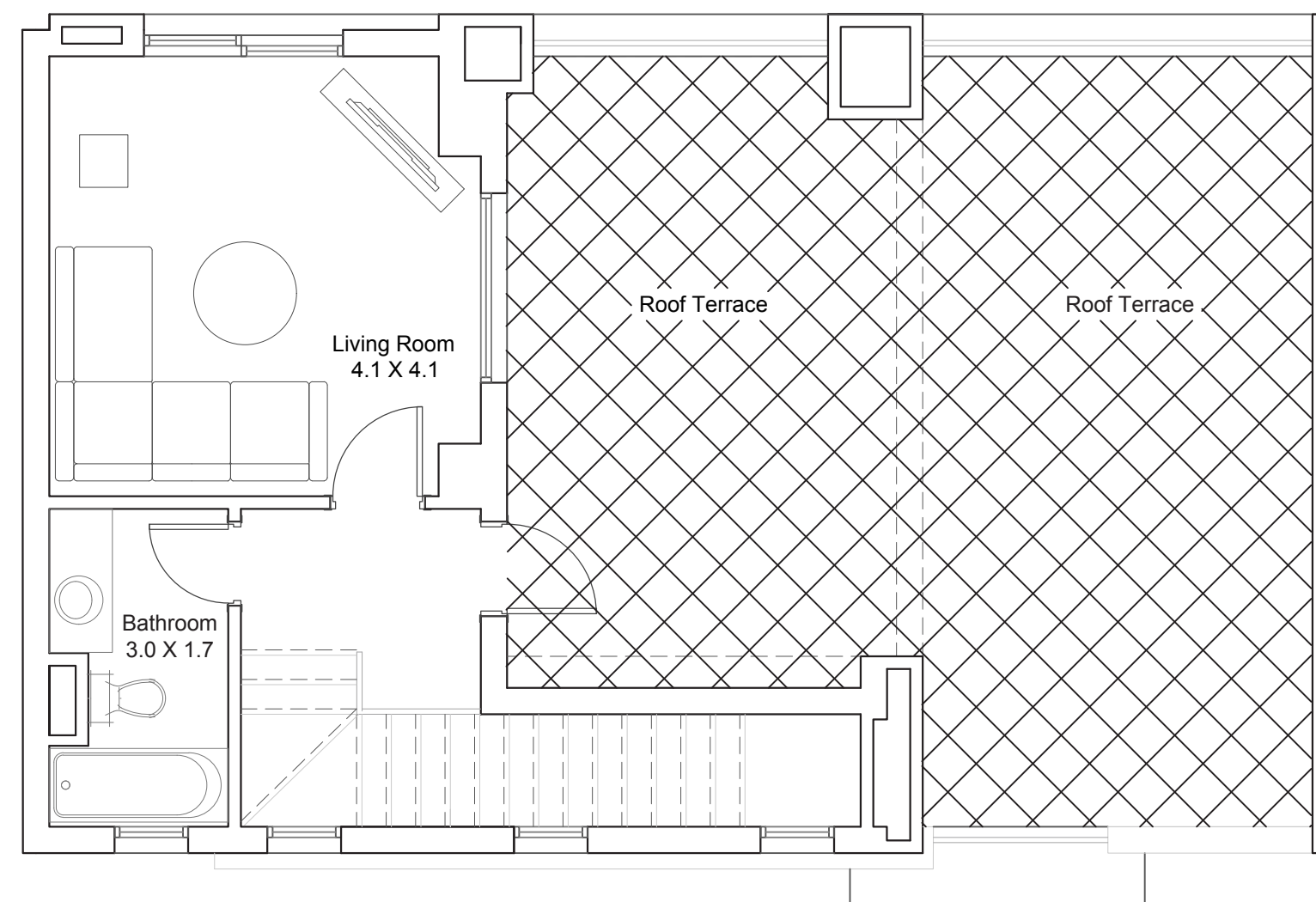
- 
- GROSS AREA:  
238 SQM
- Ground Floor  
91 SQM
- First Floor  
103 SQM
- Roof Suite  
44 SQM
- Roof Terrace  
55 SQM



Ground Floor



First Floor



Second Floor

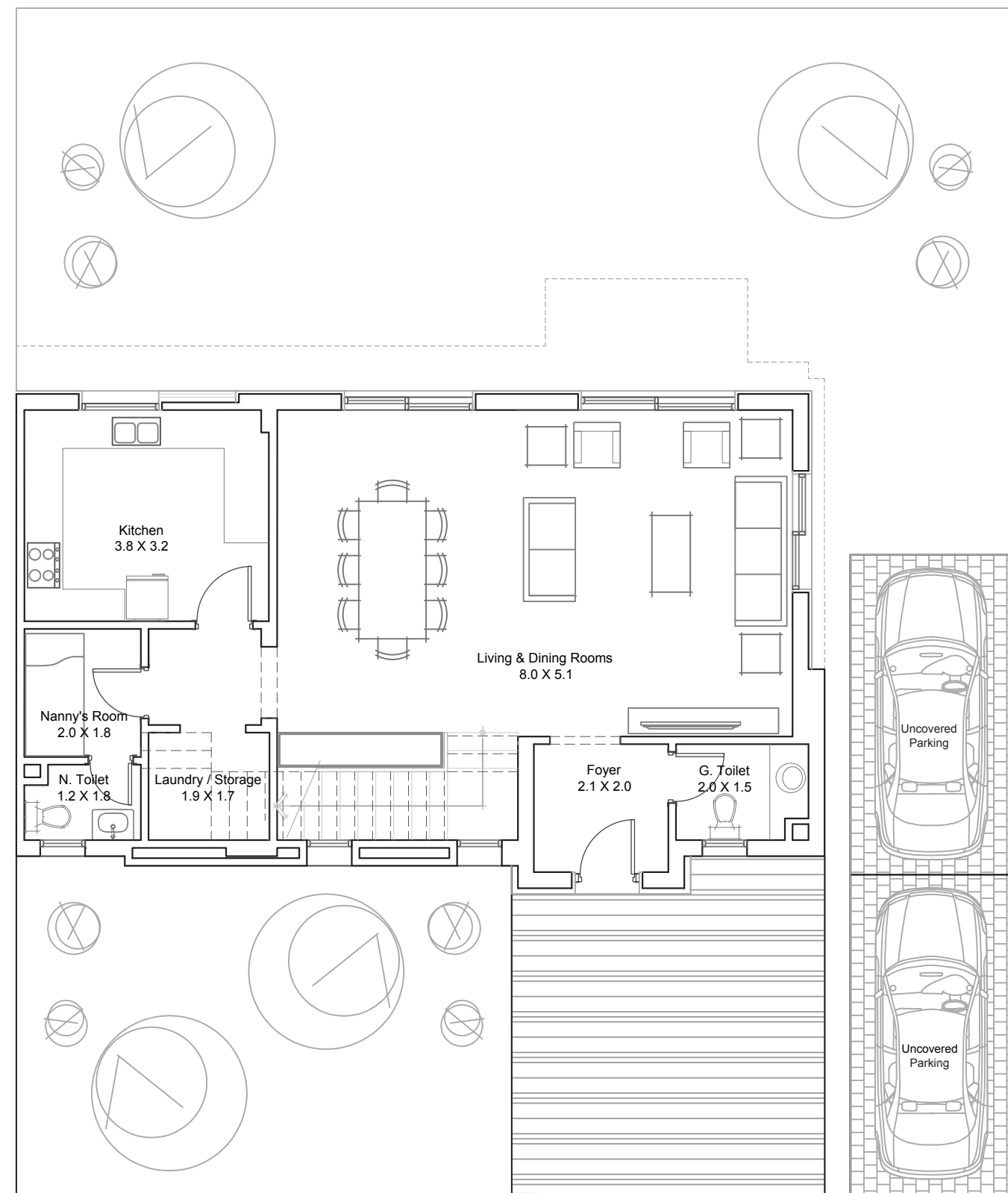
## UNIT COMPONENTS

- 
- Ground Floor
- Living Room
- Dining Room
- Kitchen
- Guest Toilet
- Ensuite Nanny's Room
- 
- First Floor
- Ensuite Master Bedroom
- 2nd Bedroom
- 3rd Bedroom
- Shared Bath
- Terrace
- 
- Second Floor
- High Ceiling Living Room
- Shared Bath
- Roof Terrace

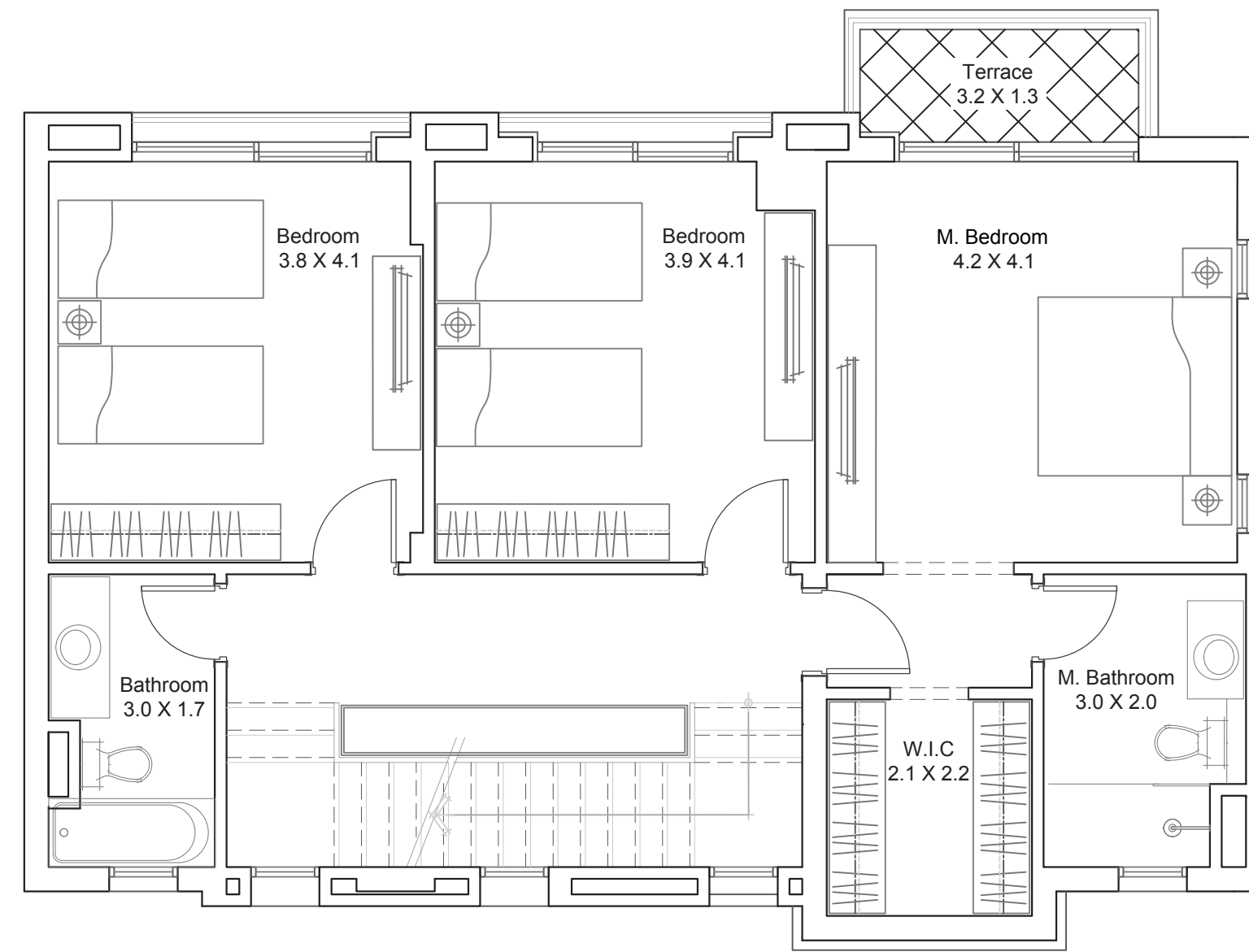


# TOWNHOMES-TCR

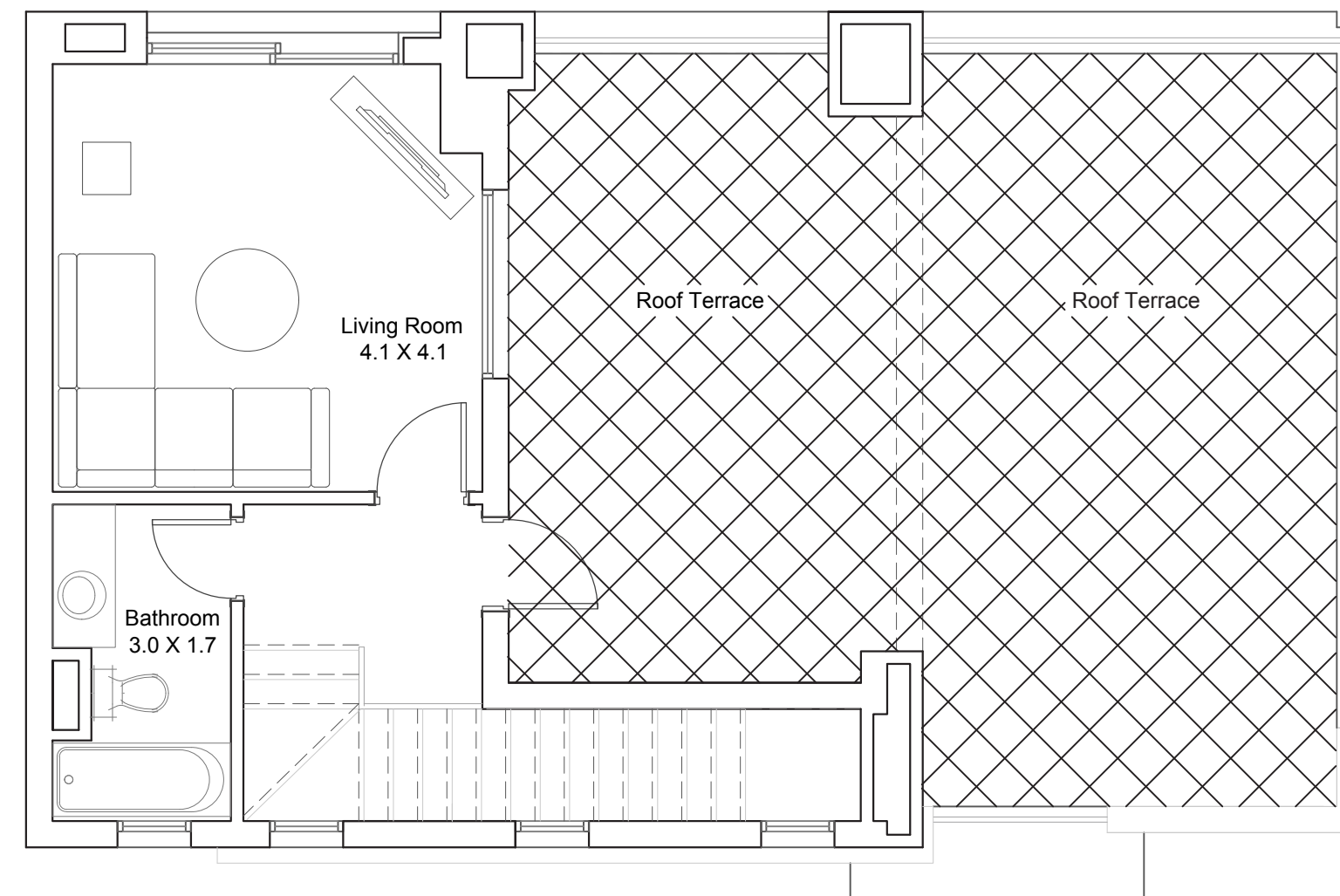
- 
- GROSS AREA:  
243 SQM
- Ground Floor  
93 SQM
- First Floor  
106 SQM
- Roof Suite  
44 SQM
- Roof Terrace  
58 SQM



Ground Floor



First Floor



Second Floor

## UNIT COMPONENTS

Ground Floor

- Living Room
- Dining Room
- Kitchen
- Guest Toilet
- Ensuite Nanny's Room

First Floor

- Ensuite Master Bedroom
- 2nd Bedroom
- 3rd Bedroom
- Shared Bath
- Terrace

Second Floor

- High Ceiling Living Room
- Shared Bath
- Roof Terrace





Marakez is the leading mixed-use developer in Egypt, with a continuously growing portfolio of residential and commercial projects including District Five, Aeon Residences, Mall of Arabia, Mall of Tanta, D5M and Mindhaus Offices; bringing a breadth of experience from a dynamic team of experienced and innovative Egyptian professionals.

