

THE CONDOS

WATERFRONT LIVING

travcoproperties.

THE EPITOME OF COASTAL LIVING



RAS S O M A

THE DESTINATION

Nestled on the bay of Ras Abu Soma, Travco Properties' latest destination on the Red Sea is flourishing and ready to be the next flagship resort on Egypt's East Coast.

The unique combination of world-class service and years of experience in the hospitality industry, births a one of a kind International residential destination and tourist hotspot, that celebrates nature and all the wonders it has to offer.



EXCLUSIVE MARINA



REAL LIFE IMAGE TAKEN AT RAS SOMA

MASTERPLAN OVERVIEW

1. Main Entry
2. The Town
3. Go-karting
4. Water Park
5. Adventure Park
6. Oasis Lagoon Park
7. Sports Club
8. Wadi Park & Lagoon Beach Club
9. The Village
10. Marina Apartments
11. Ras Soma Marina
12. Ras Soma Residences
13. Beach Club
14. Kitesurfing & Diving Center
15. Steigenberger Resort Ras Soma
16. Jaz Ras Soma
17. Hotel Conference Center
18. Hotel Serviced Apartments
19. Utility Area
20. Lake Villas
21. The Condos



1.3 KM SANDY BEACH



REAL LIFE IMAGE TAKEN AT RAS SOMA



THE CONDOS

AN **EXCLUSIVE** NEIGHBORHOOD AT RAS SOMA

The Condos introduces a refined way of coastal living at the heart of Ras Soma. Thoughtfully placed just minutes from The Village, The Marina, and The Beach, this exclusive residential enclave blends elegance with ease.

Designed with sustainability at its core, the community promotes walking and electric mobility, ensuring a serene, environmentally conscious setting. Here, every detail reflects a contemporary Red Sea lifestyle, where sophistication meets simplicity, and nature remains an essential part of daily life.

CENTRALLY LOCATED

1 minute walk to The Village
5 minute walk to The Beach
6 minute walk to The Marina

LIFE, IN PERFECT

B A L A N C E



EXCLUSIVE MARINA

For those seeking sea-bound leisure the marina will be the hub for boat cruising, deep sea fishing, diving and coastal tours.

The marina will be further activated by a waterfront dining and retail experience along its quayside, with private and serviced apartments overlooking the marina basin.



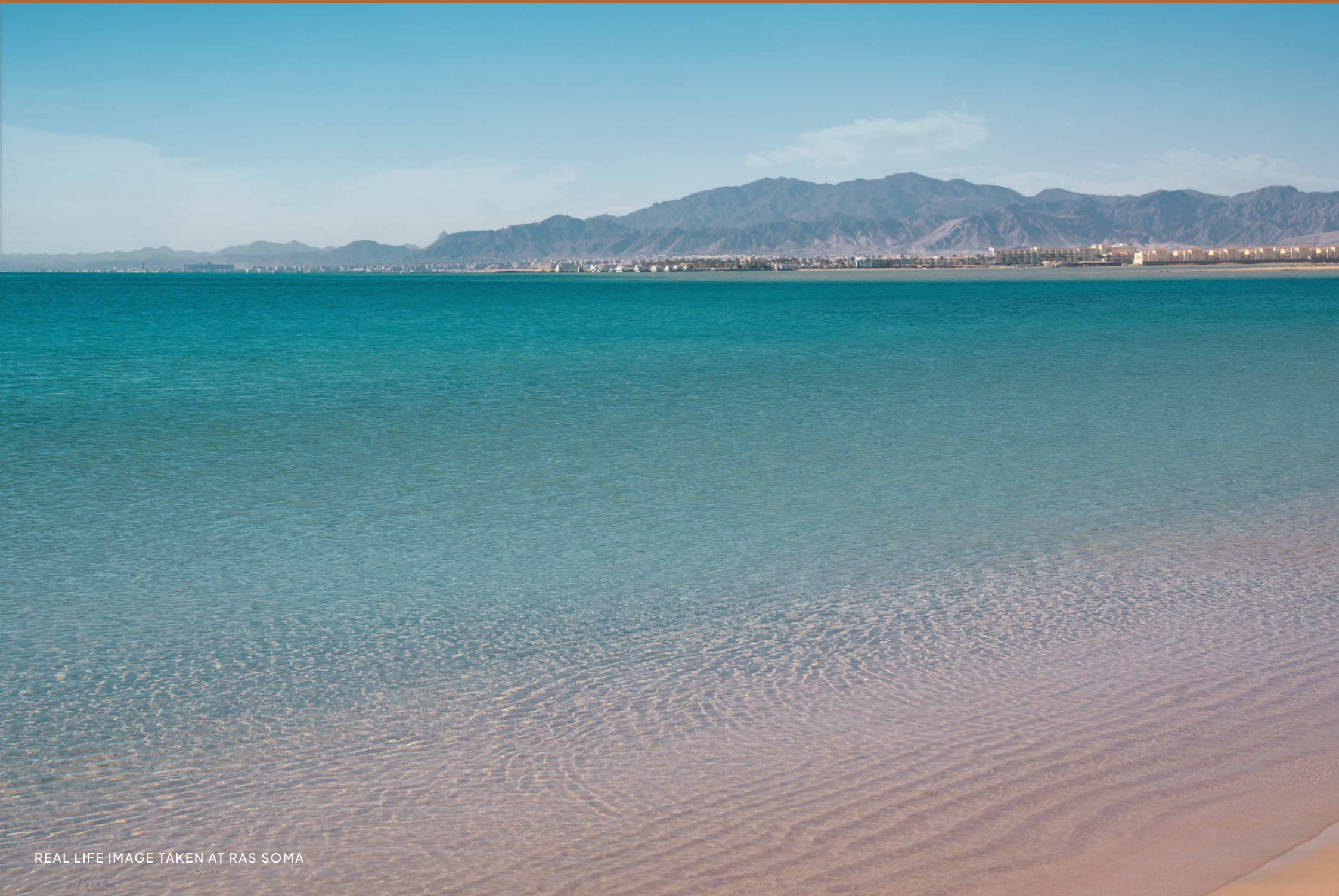


STATE-OF-THE-ART WELLNESS CENTER

Immerse yourself in a world of beauty at **Steigenberger Resort Ras Soma**, while finding absolute peace and relaxation.

Welcome to the most soothing pampering experience, with sensory showers, relaxing saunas, steam baths and a jacuzzi. If there's one thing we can assure you, it's that after our treatments, you will feel as if you have been reborn.





REAL LIFE IMAGE TAKEN AT RAS SOMA



WORLD-CLASS SPORTS FACILITIES

Ras Soma is home to a collection of world-class sports facilities thoughtfully designed to inspire an active and balanced lifestyle.

From padel and tennis courts to beach volleyball and kitesurfing, every activity is set against the backdrop of the Red Sea's natural beauty, creating an atmosphere where wellbeing and recreation come naturally.





RETAIL THERAPY

At the heart of Ras Soma lies The Village, a vibrant hub where coastal charm meets modern luxury.

Discover boutique stores and concept outlets by day, then indulge in global flavors and seaside dining by night, a true celebration of Red Sea living.



WATERSPORTS HAVEN



REAL LIFE IMAGE TAKEN AT RAS SOMA

THE CONDOS

RAS SOMA

PROJECT L A Y O U T



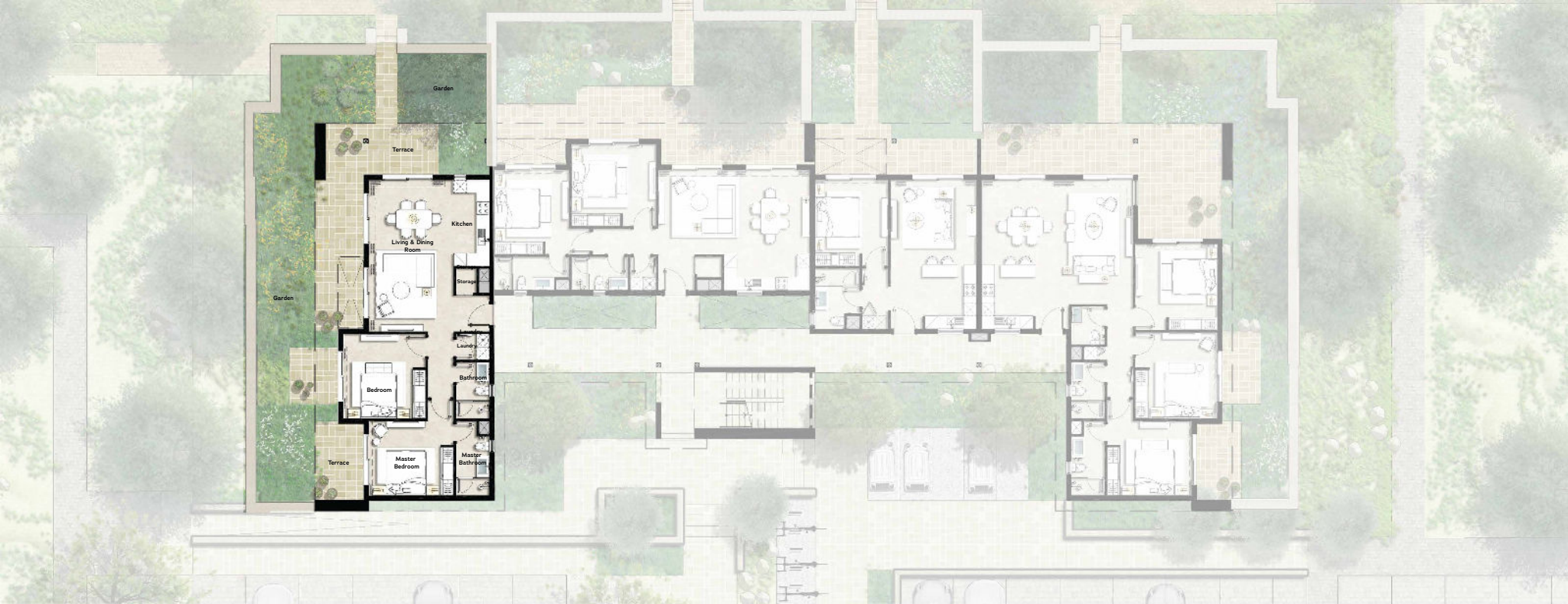
POOLSIDE V I E W



REAL LIFE IMAGE TAKEN AT RAS SOMA



GROUND FLOOR C O N D O S



GROUND FLOOR CONDOS

2-Bedroom Condo A - 135 m²

Living & Dining Room	6.70 m x 3.60 m	Bathroom	2.40 m x 1.50 m
Kitchen	3.80 m x 1.60 m	Laundry	1.10 m x 1.50 m
Master Bedroom	3.25 m x 3.60 m	Storage	1.00 m x 1.00 m
Master Bathroom	3.20 m x 1.50 m	Terraces	28 m ²
Bedroom	3.70 m x 3.50 m	Garden	105 m ²

DISCLAIMER

All above floor plans, features and specifications are conceptual only and subject to change. All dimensions are approximate and may vary with actual construction. All depictions of matters of detail shown hereon, including, but not limited to, items of finish, furniture and decoration, are conceptual only and are not necessarily included in the Unit. For a correct representation of the items included in the Unit, see the Purchase Agreement. Tranco Properties reserves the right to make revisions and design development. Actual area may vary from the stated area. All above drawings are not to scale. Masterplans, illustrations and sections are "works in progress" which periodically change as circumstances require and according to government regulations and permits. Overall concepts may be used as a general reference source, but specific details are not to be viewed as "set in stone".



GROUND FLOOR CONDOS

2-Bedroom Condo B - 118 m²

Living & Dining Room	3.60 m x 6.70 m	Bathroom	1.50 m x 2.50 m
Kitchen	1.60 m x 3.80 m	Laundry	1.50 m x 1.10 m
Master Bedroom	3.60 m x 3.30 m	Storage	1.00 m x 1.00 m
Master Bathroom	1.50 m x 3.30 m	Terrace	13 m ²
Bedroom	3.50 m x 3.70 m	Garden	78 m ²

DISCLAIMER

All above floor plans, features and specifications are conceptual only and subject to change. All dimensions are approximate and may vary with actual construction. All depictions of matters of detail shown hereon, including, but not limited to, items of finish, furniture and decoration, are conceptual only and are not necessarily included in the Unit. For a correct representation of the items included in the Unit, see the Purchase Agreement. Tranco Properties reserves the right to make revisions and design development. Actual area may vary from the stated area. All above drawings are not to scale. Masterplans, illustrations and sections are "works in progress" which periodically change as circumstances require and according to government regulations and permits. Overall concepts may be used as a general reference source, but specific details are not to be viewed as "set in stone".



GROUND FLOOR CONDOS

1-Bedroom Condo - 70 m²

Living & Dining Room	4.30 m x 3.80 m	Laundry	0.65 m x 1.00 m
Kitchen	2.30 m x 2.30 m	Terrace	8 m ²
Bedroom	3.75 m x 3.20 m	Garden	47 m ²
Bathroom	2.60 m x 1.60 m		

DISCLAIMER

All above floor plans, features and specifications are conceptual only and subject to change. All dimensions are approximate and may vary with actual construction. All depictions of matters of detail shown hereon, including, but not limited to, items of finish, furniture and decoration, are conceptual only and are not necessarily included in the Unit. For a correct representation of the items included in the Unit, see the Purchase Agreement. Tranco Properties reserves the right to make revisions and design development. Actual area may vary from the stated area. All above drawings are not to scale. Masterplans, illustrations and sections are "works in progress" which periodically change as circumstances require and according to government regulations and permits. Overall concepts may be used as a general reference source, but specific details are not to be viewed as "set in stone".



GROUND FLOOR CONDOS

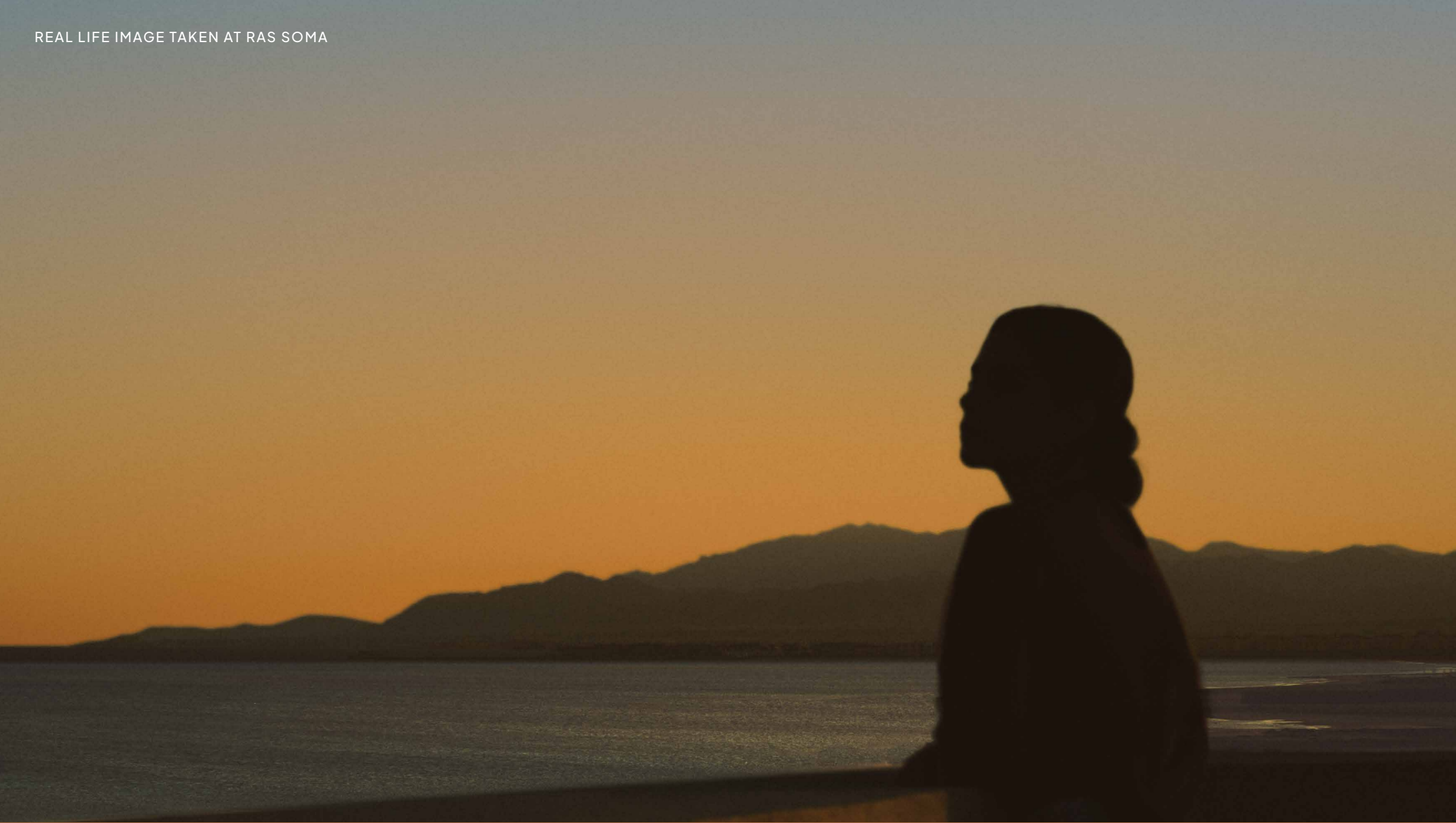
3-Bedroom Condo - 173 m²

Living & Dining Room	6.70 m x 3.60 m	Bedroom 2	3.80 m x 3.60 m
Kitchen	3.00 m x 2.30 m	Bathroom	2.40 m x 1.40 m
Guest Toilet	1.60 m x 1.40 m	Laundry	0.65 m x 0.65 m
Master Bedroom	3.25 m x 3.70 m	Terraces	35 m²
Master Bathroom	3.20 m x 1.40 m	Garden	112 m²
Bedroom 1	3.75 m x 3.60 m		

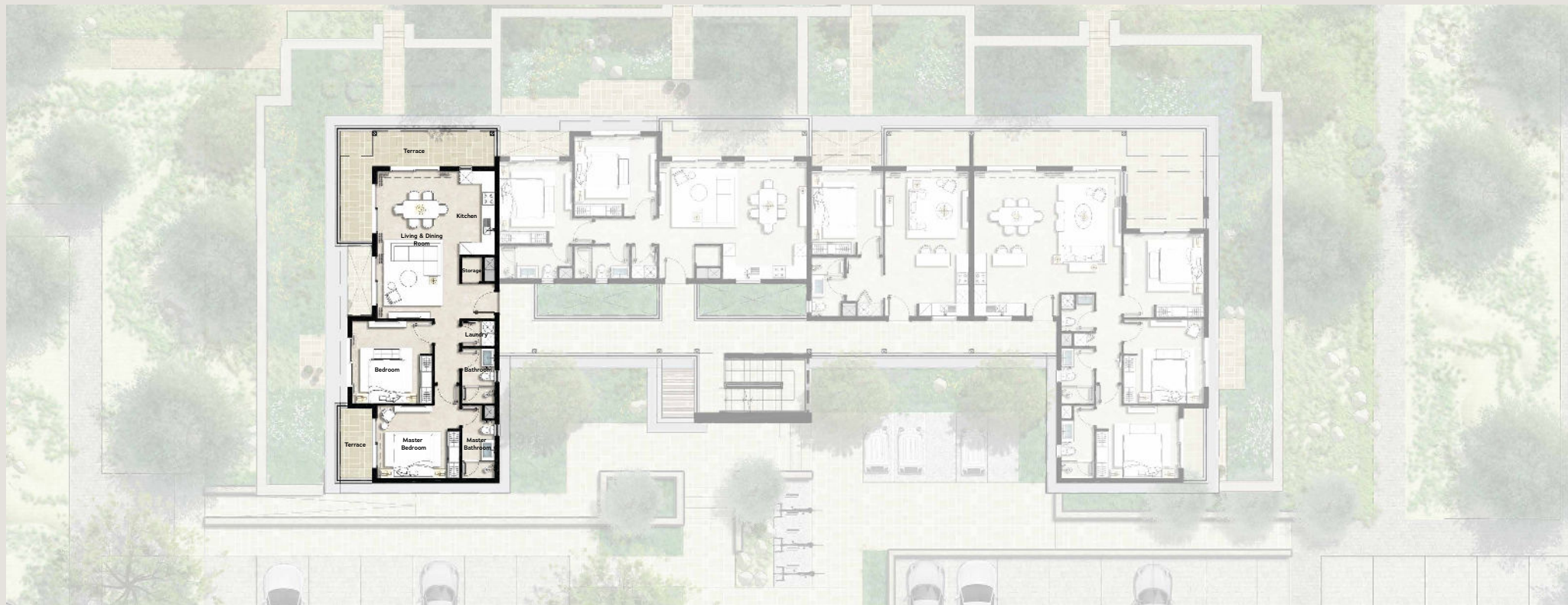
DISCLAIMER

All above floor plans, features and specifications are conceptual only and subject to change. All dimensions are approximate and may vary with actual construction. All depictions of matters of detail shown hereon, including, but not limited to, items of finish, furniture and decoration, are conceptual only and are not necessarily included in the Unit. For a correct representation of the items included in the Unit, see the Purchase Agreement. Travo Properties reserves the right to make revisions and design development. Actual area may vary from the stated area. All above drawings are not to scale. Masterplans, illustrations and sections are "works in progress" which periodically change as circumstances require and according to government regulations and permits. Overall concepts may be used as a general reference source, but specific details are not to be viewed as "set in stone".

REAL LIFE IMAGE TAKEN AT RAS SOMA



FIRST & SECOND FLOOR C O N D O S



FIRST & SECOND FLOOR CONDOS

2-Bedroom Condo A - 135 m²

Living & Dining Room	6.70 m x 3.60 m	Bathroom	2.40 m x 1.50 m
Kitchen	3.80 m x 1.60 m	Laundry	1.10 m x 1.50 m
Master Bedroom	3.25 m x 3.60 m	Storage	1.00 m x 1.00 m
Master Bathroom	3.20 m x 1.50 m	Terraces	28 m ²
Bedroom	3.70 m x 3.50 m		

DISCLAIMER

All above floor plans, features and specifications are conceptual only and subject to change. All dimensions are approximate and may vary with actual construction. All depictions of matters of detail shown hereon, including, but not limited to, items of finish, furniture and decoration, are conceptual only and are not necessarily included in the Unit. For a correct representation of the items included in the Unit, see the Purchase Agreement. Travo Properties reserves the right to make revisions and design development. Actual area may vary from the stated area. All above drawings are not to scale. Masterplans, illustrations and sections are "works in progress" which periodically change as circumstances require and according to government regulations and permits. Overall concepts may be used as a general reference source, but specific details are not to be viewed as "set in stone".



FIRST & SECOND FLOOR CONDOS

2-Bedroom Condo B - 118 m²

Living & Dining Room	3.60 m x 6.70 m	Bathroom	1.50 m x 2.50 m
Kitchen	1.60 m x 3.80 m	Laundry	1.50 m x 1.10 m
Master Bedroom	3.60 m x 3.30 m	Storage	1.00 m x 1.00 m
Master Bathroom	1.50 m x 3.30 m	Terrace	13 m ²
Bedroom	3.50 m x 3.70 m		

DISCLAIMER

All above floor plans, features and specifications are conceptual only and subject to change. All dimensions are approximate and may vary with actual construction. All depictions of matters of detail shown hereon, including, but not limited to, items of finish, furniture and decoration, are conceptual only and are not necessarily included in the Unit. For a correct representation of the items included in the Unit, see the Purchase Agreement. Tranco Properties reserves the right to make revisions and design development. Actual area may vary from the stated area. All above drawings are not to scale. Masterplans, illustrations and sections are "works in progress" which periodically change as circumstances require and according to government regulations and permits. Overall concepts may be used as a general reference source, but specific details are not to be viewed as "set in stone".



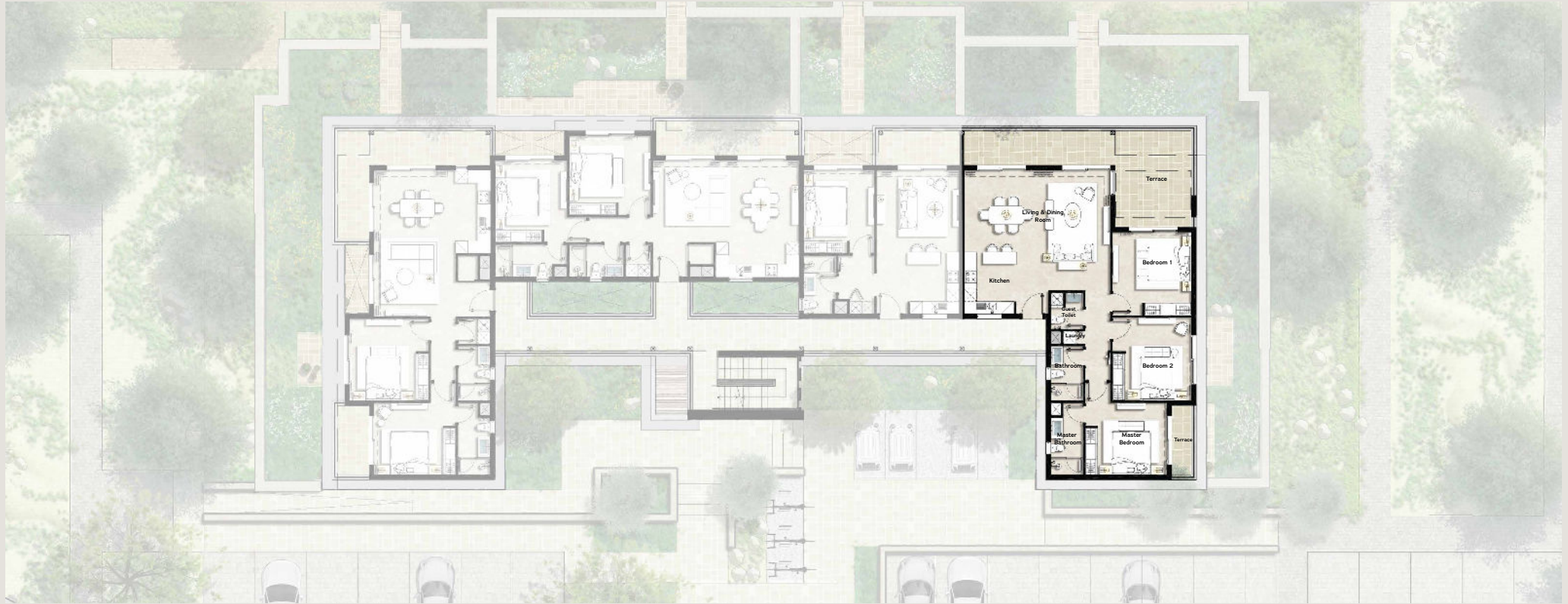
FIRST & SECOND FLOOR CONDOS

1-Bedroom Condo – 70 m²

Living & Dining Room	4.30 m x 3.80 m	Laundry	0.65 m x 1.00 m
Kitchen	2.30 m x 2.30 m	Terrace	8 m ²
Bedroom	3.75 m x 3.20 m		
Bathroom	2.60 m x 1.60 m		

DISCLAIMER

All above floor plans, features and specifications are conceptual only and subject to change. All dimensions are approximate and may vary with actual construction. All depictions of matters of detail shown hereon, including, but not limited to, items of finish, furniture and decoration, are conceptual only and are not necessarily included in the Unit. For a correct representation of the items included in the Unit, see the Purchase Agreement. Travo Properties reserves the right to make revisions and design development. Actual area may vary from the stated area. All above drawings are not to scale. Masterplans, illustrations and sections are "works in progress" which periodically change as circumstances require and according to government regulations and permits. Overall concepts may be used as a general reference source, but specific details are not to be viewed as "set in stone".



FIRST & SECOND FLOOR CONDOS

3-Bedroom Condo - 173 m²

Living & Dining Room	6.70 m x 3.60 m	Bedroom 2	3.80 m x 3.60 m
Kitchen	3.00 m x 2.30 m	Bathroom	2.40 m x 1.40 m
Guest Toilet	1.60 m x 1.40 m	Laundry	0.65 m x 0.65 m
Master Bedroom	3.25 m x 3.70 m	Terraces	35 m ²
Master Bathroom	3.20 m x 1.40 m		
Bedroom 1	3.75 m x 3.60 m		

DISCLAIMER

All above floor plans, features and specifications are conceptual only and subject to change. All dimensions are approximate and may vary with actual construction. All depictions of matters of detail shown hereon, including, but not limited to, items of finish, furniture and decoration, are conceptual only and are not necessarily included in the Unit. For a correct representation of the items included in the Unit, see the Purchase Agreement. Tranco Properties reserves the right to make revisions and design development. Actual area may vary from the stated area. All above drawings are not to scale. Masterplans, illustrations and sections are "works in progress" which periodically change as circumstances require and according to government regulations and permits. Overall concepts may be used as a general reference source, but specific details are not to be viewed as "set in stone".

FAMILY FRIENDLY DESTINATION

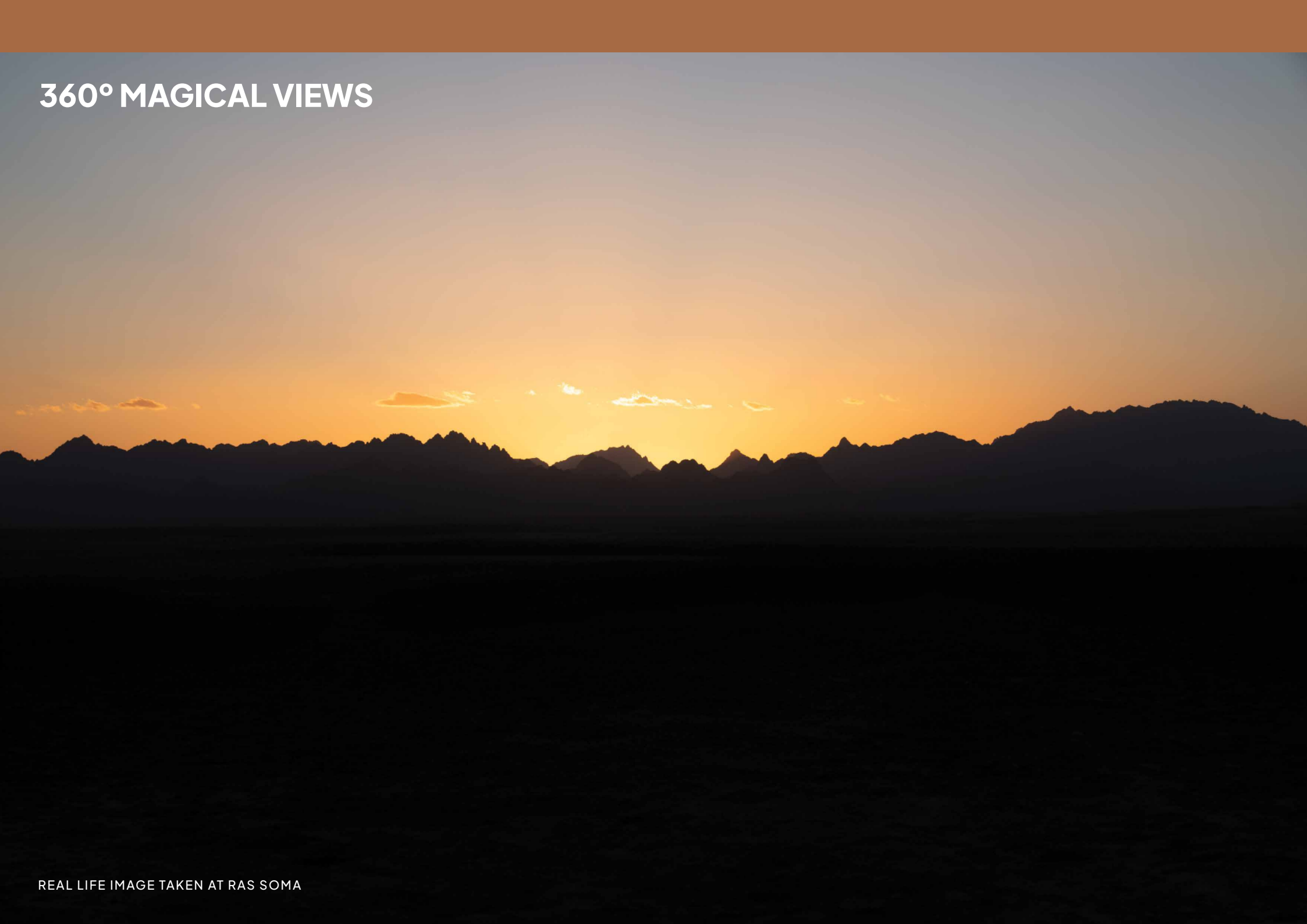


REAL LIFE IMAGE TAKEN AT RAS SOMA





360° MAGICAL VIEWS



REAL LIFE IMAGE TAKEN AT RAS SOMA

RAS
S O M A

travcoproperties.