



MAR Residence *Signature*



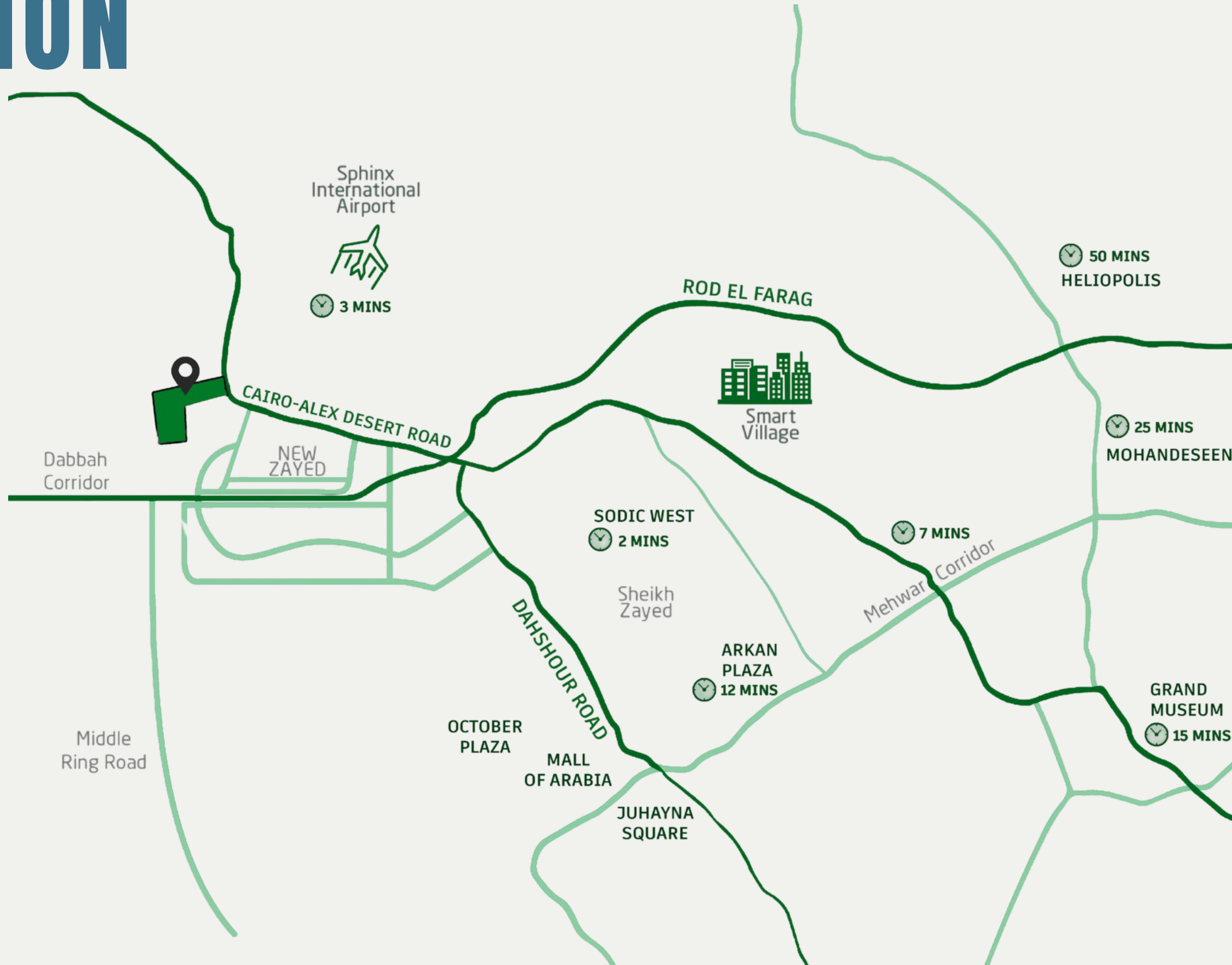
ALMARASEM
DEVELOPMENT



TABLE OF *Contents*

- 1. PROJECT LOCATION**
- 2. MASTERPLAN**
- 3. ZONING**
- 4. PROJECT BRIEF**
- 5. SHOTS**

LOCATION

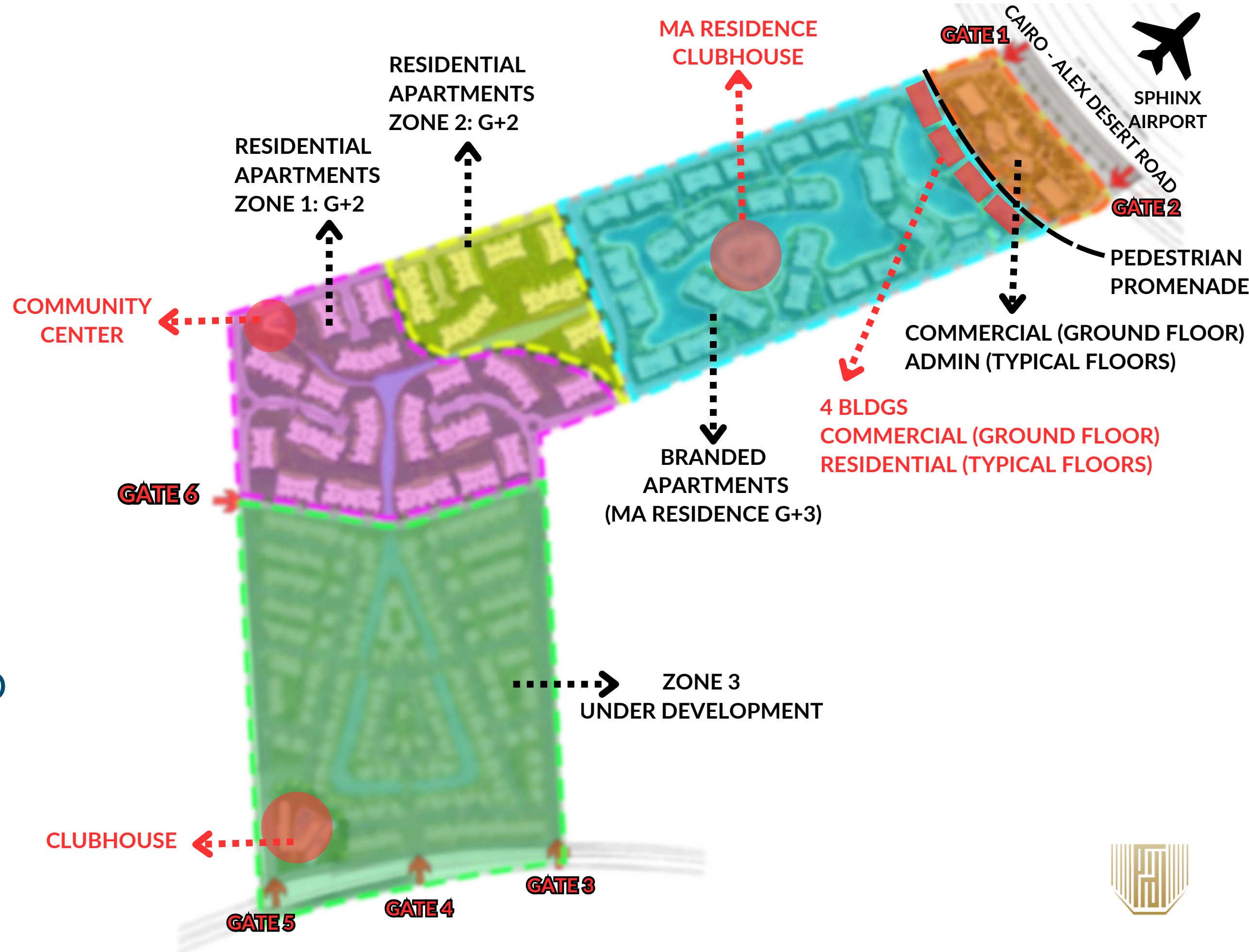


UPDATED MASTERPLAN



Zoning

- 6 PROJECT GATES
- 1 SECONDARY GATE
- 2 GATES ON CAIRO-ALEX DESERT ROAD
- 3 GATES ON NEW ZAYED ROAD



PROJECT *Brief*

MAResidence

Signature

NO. OF FLOORS

(G+3)

BRANDED APARTMENTS

FULLY

FINISHED & FURNISHED

EQUIPPED WITH

DELUXE QUALITY & HIGH STANDARDS

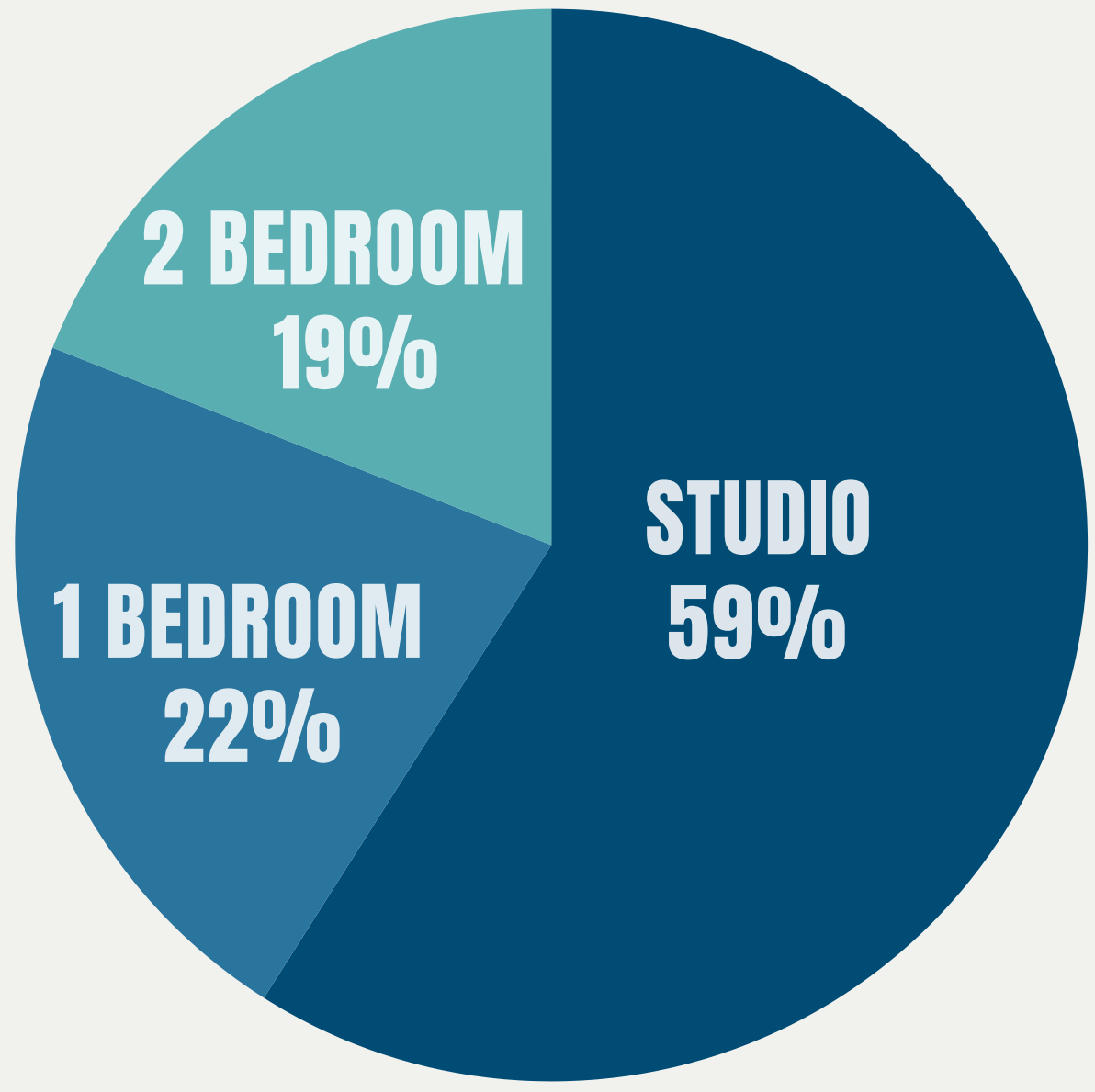


NO. OF BLOCKS (G+3)

TYPE A 4 BLOCKS
TYPE A' 2 BLOCKS

TYPE B 9 BLOCKS
TYPE B' 5 BLOCKS

TYPE C 3 BLOCKS
TYPE D 4 BLOCKS



FACT SHEET

LAND AREA

35 ACRES

BUILT UP AREA

124,614 SQM

FOOT PRINT

20%

AREAS

STUDIOS

STARTING FROM **49** TO **64**
sqm sqm

1 BEDROOM APARTMENTS

STARTING FROM **71** TO **82**
sqm sqm

2 BEDROOM APARTMENTS

STARTING FROM **107** TO **119**
sqm sqm

LAGOONS

A R E A S
**16,000
SQM**

W I D T H
**UP TO
70 METERS**



AMENITIES

SANDY

BEACHES

SWIMMABLE

LAGOONS

CLUB

HOUSE

PROMENADE



SPA



GYM



KIDS AREA



RESTAURANTS



RETAIL

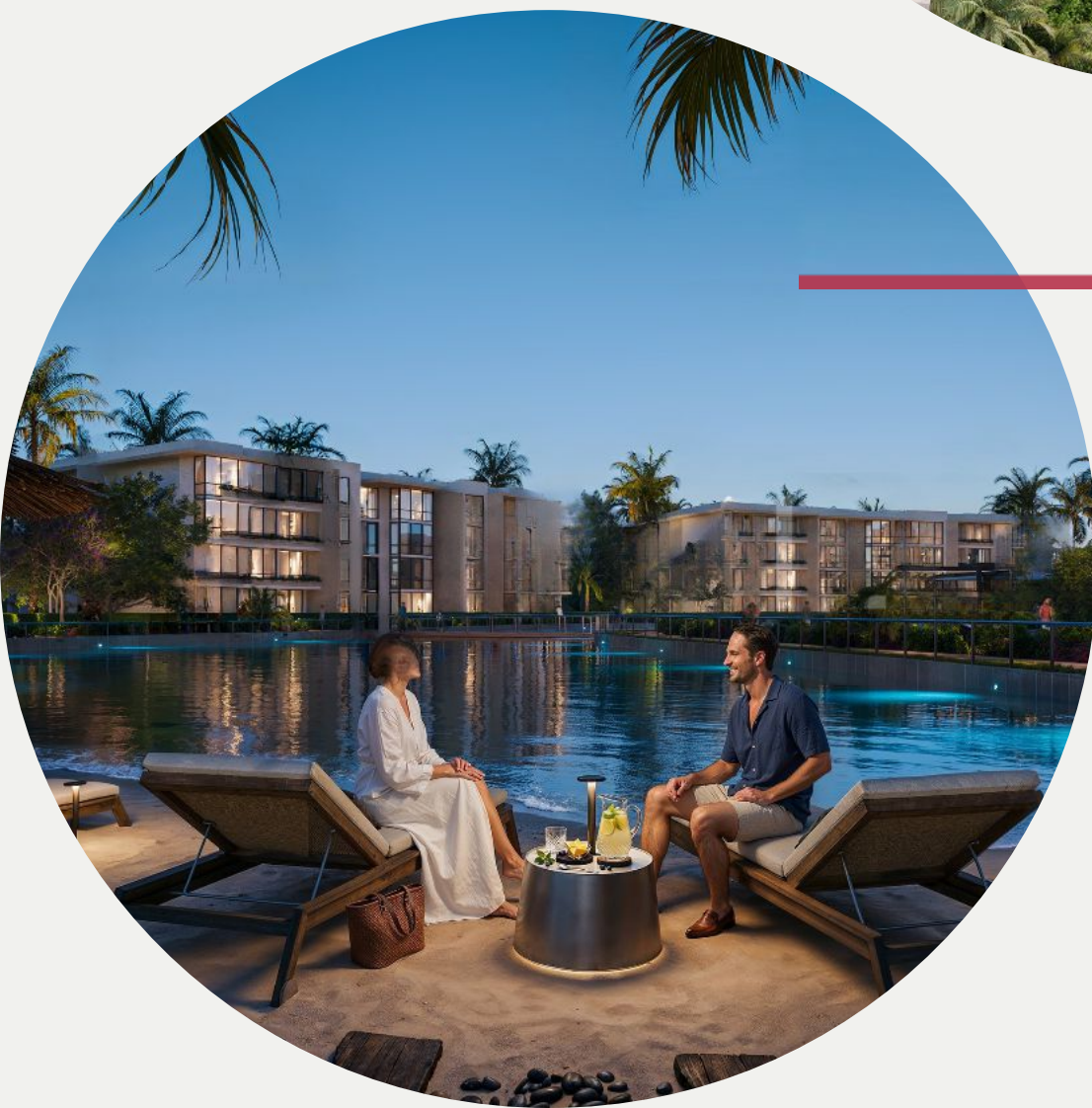
RESIDENTIAL

*Drop off
Building*

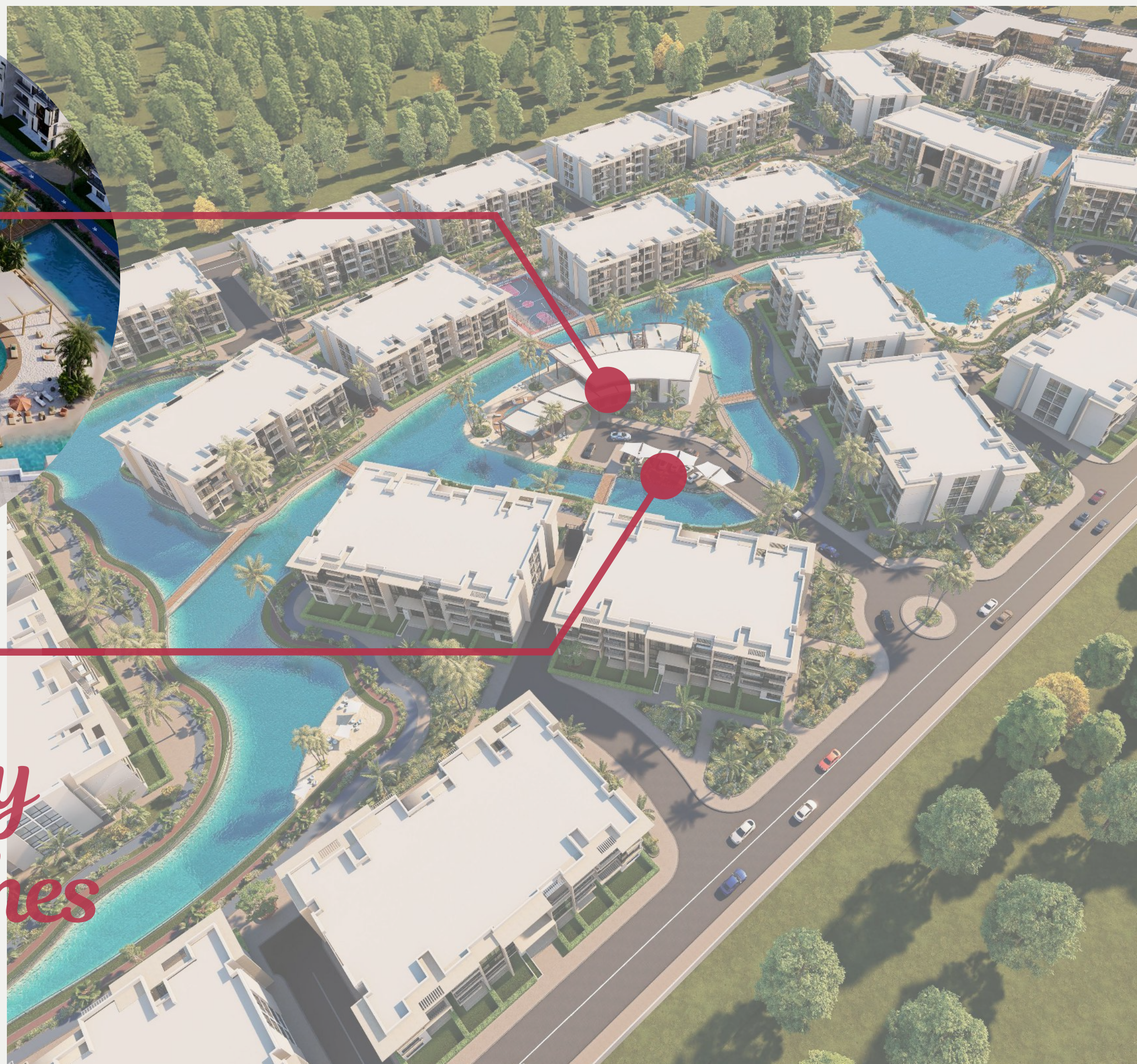


*Walking
&
Jogging
Tracks*

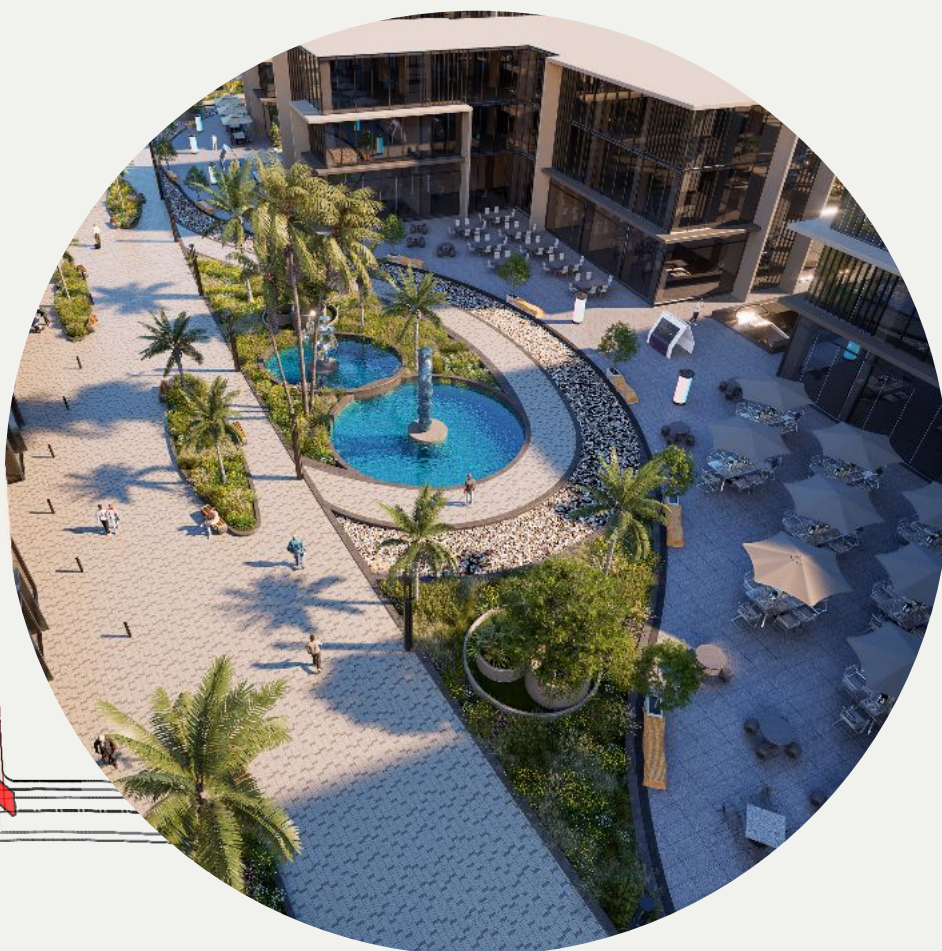
Club House



Sandy Beaches



Promenade



EXTERIOR

Shots









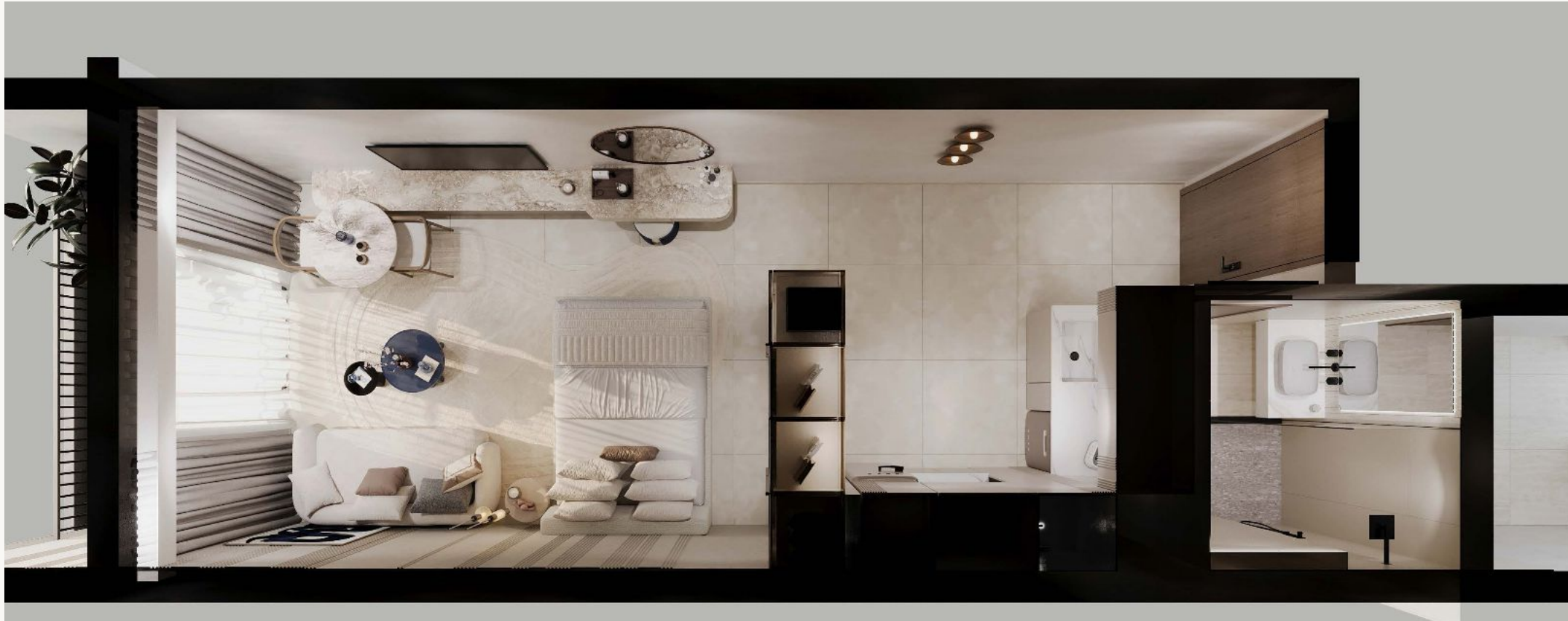




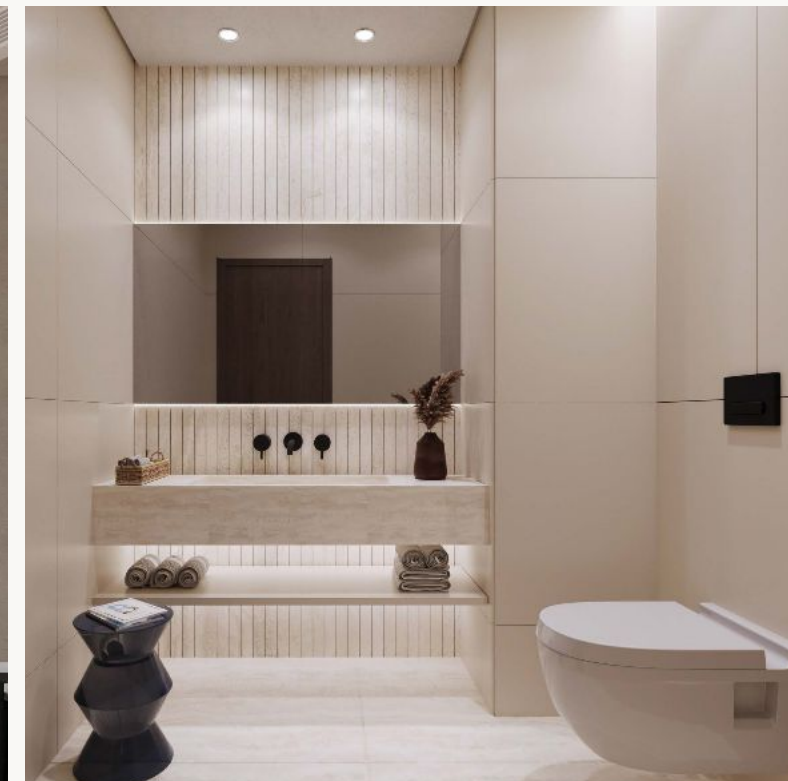


INTERIOR *Shots*

INTERIORS (STUDIO)



INTERIORS (1 BEDROOMS APARTMENT)



INTERIORS (2 BEDROOM APARTMENT)



An aerial, high-angle view of a modern residential complex at dusk. The complex consists of several multi-story apartment buildings with balconies and large windows, some of which are illuminated from within. In the center of the complex is a large, curved swimming pool with a sandy beach area. Above the pool, there is a sports court, possibly a basketball court, with a red running track around it. The area is landscaped with palm trees and other greenery. The overall atmosphere is serene and modern.

THANK YOU