





Om

ogami

*spaces*

ARTFULLY

*designed*



*A Renowned Destination*

Ogami draws inspiration from its namesake, a serene Japanese island renowned for breathtaking sunsets and spiritual tranquility. Our Ogami on Egypt's North Coast embodies this essence,

creating a sanctuary where natural beauty and inner peace converge. Here, every sunset paints the sky with the same awe-inspiring colors that have captivated souls across oceans.





WELCOME  
*to*  
ogami



## ESCAPE TO EGYPT'S FINEST DESTINATIONS

*A Global Signature Development On The Mediterranean*

Egypt's North Coast stands as a testament to nature's grandeur and human aspiration. With pristine beaches stretching along the Mediterranean, this highly sought-after destination has become synonymous with escape and indulgence. Here, larger-than-life experiences unfold against a backdrop of soft white sands and crystal blue waters.



## A DESTINATION THAT REDEFINES EXCELLENCE

### *Mediterranean Soul, Japanese Serenity*

Ogami redefines coastal living by harmonizing Mediterranean charm with Japanese tranquility.

The cascading elevations and island-inspired landscapes create an ambiance of understated refinement. As the exclusive home to Nobu on Egypt's North Coast, Ogami presents a harmonious blend of international sophistication and local allure, setting a new standard for coastal living.



## CASCADING COASTAL LUXURY

*Every Home Acts as a Private Sanctuary*

Ogami's tiered design is to elevate the North Coast experience. Each level offers a unique standpoint, showcasing breathtaking views of the development and the vast Mediterranean beyond. From gentle slopes to the highest points, an ever-changing panorama captures the essence of sky, sand and sea.



## YOUR PRIVATE COASTAL HAVEN

### *Island Living Experience*

Discover a world within worlds at Ogami, where our unique island concept creates distinct havens, each with its own character, charm, and purpose. Ogami's design infuses the essence of private island living into every corner. Lush landscapes, winding pathways, and secluded spaces create intimate enclaves within the larger development, offering a perfect balance of privacy and connection.

# AN EXCEPTIONAL DEVELOPMENT

## *15% Footprint*

Ogami's masterplan is a canvas where visionary design meets natural beauty. Designed by DLR, a globally recognized master planner ranked among the foremost experts, each element is carefully choreographed to enhance the overall experience, from residences positioned to capture the best views to thoughtfully designed communal spaces that foster connection. This is a world where nature and architecture intertwine seamlessly.



# PRIME LOCATION

## *The Jewel of Ras El Hekma*

Nestled in a prime location in Ras El Hekma, precisely situated 83 km from Marsa Matrouh, Ogami offers the perfect balance of solitude and accessibility. Enjoy the tranquility of your coastal sanctuary while remaining connected to other key destinations. At Ogami, you're ideally situated to appreciate life's precious moments without compromise.

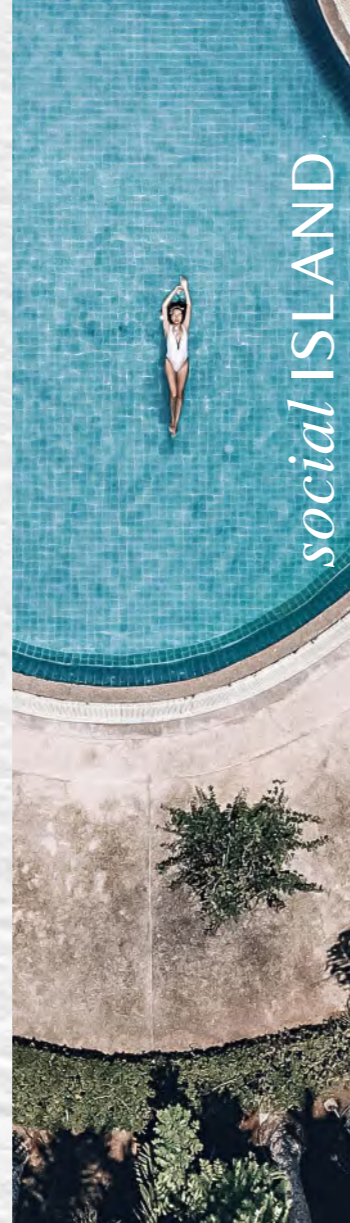




A  
*mesmerizing*  
COASTAL  
*experience*

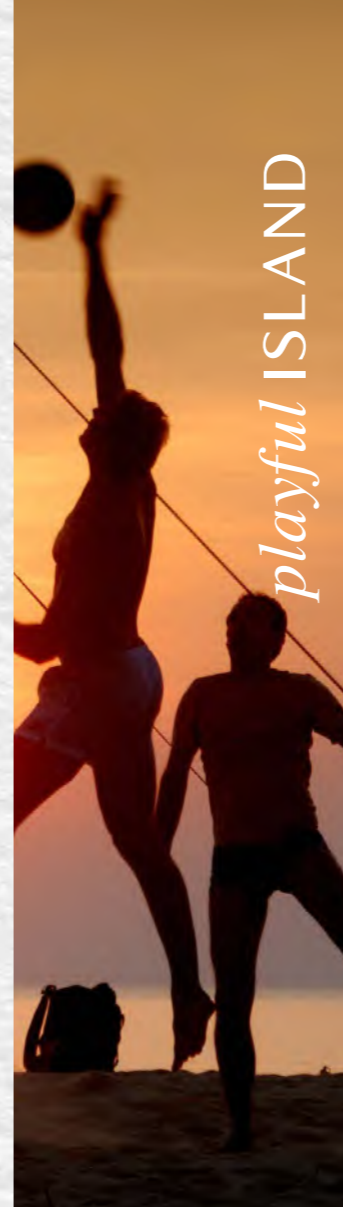
02 THE OGAMI EXPERIENCE

# A CANVAS *of coastal* BEAUTY



Lose yourself in nature's embrace, where hidden water features and secluded seating areas create a laidback, sea-view haven.

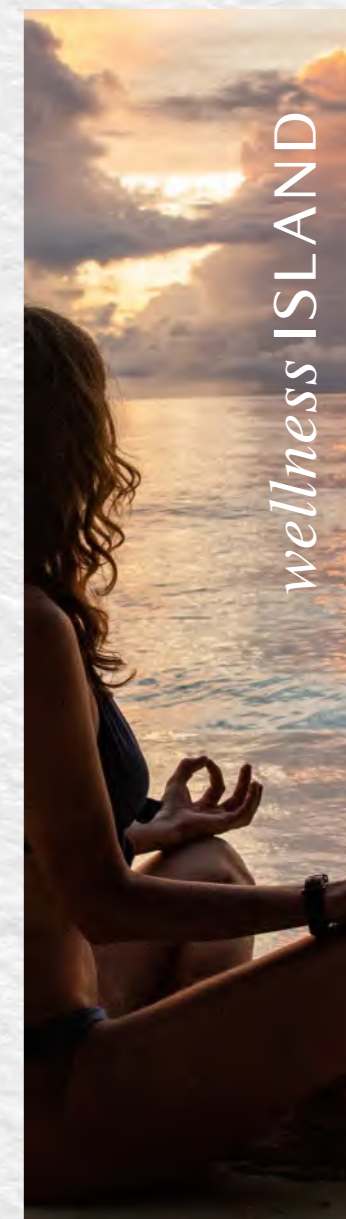
Connect at the vibrant Clubhouse, boasting circular and infinity pools with breathtaking sea views.



Unleash your spirit at the sports courts, featuring tennis, padel, & 5-a-side football facilities.



Find tranquility in the lazy lagoons, complete with seating decks, in-lagoon seating, and mesmerizing sea-view water features.



Rejuvenate body and mind at our state-of-the-art Wellness Center and serene yoga spaces.



## A MULTI-LAYERED BEACH

*More than 800m Shoreline*

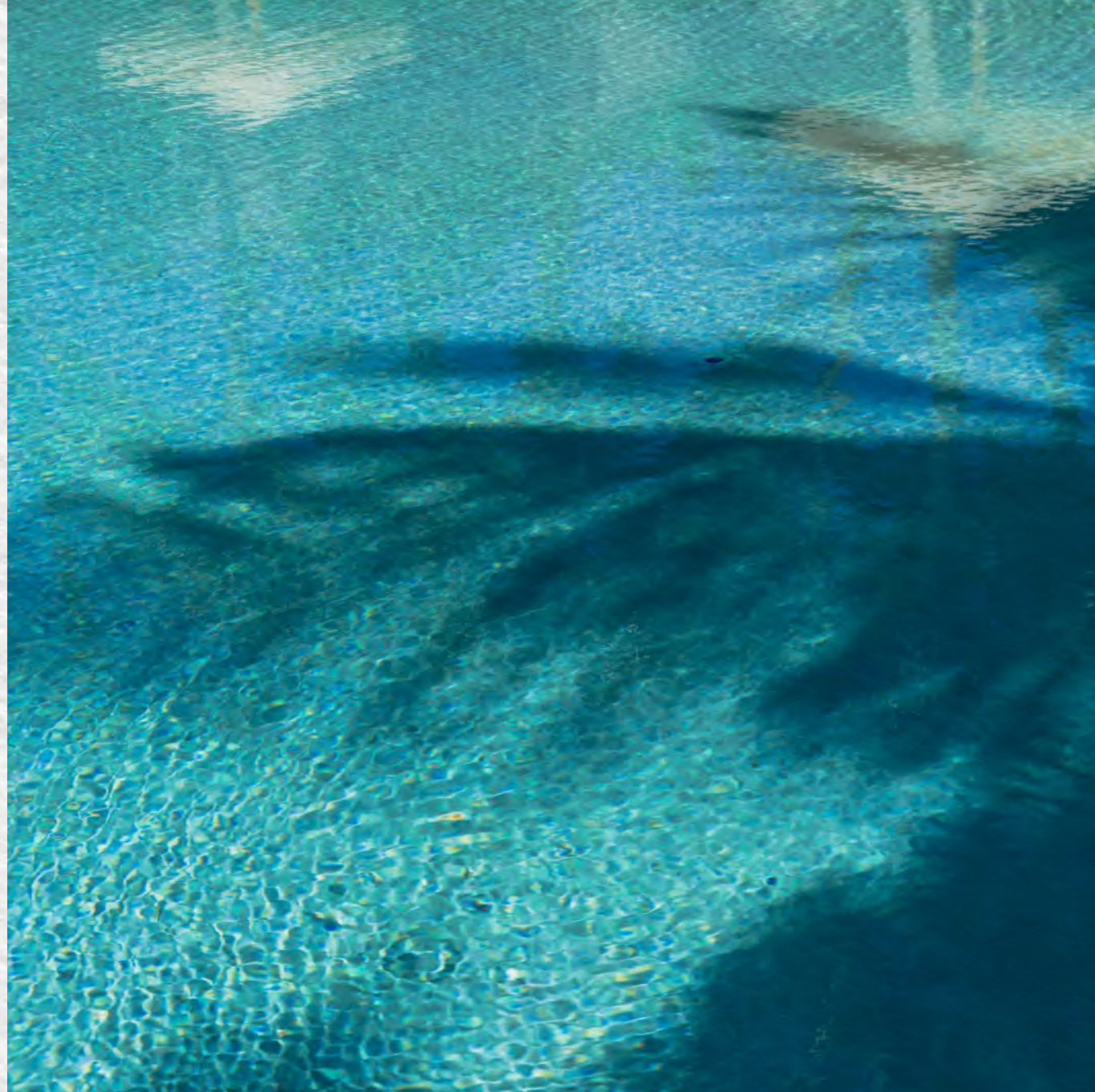
Ogami's multi-layered beach redefines seaside luxury. From the carefully curated beach furniture to the elevated beach restaurant, every detail enhances your coastal experience. Energize your day at the outdoor beach gym or simply relax and soak in the Mediterranean atmosphere.



## A CHARMING BEACHSIDE LOCALE

### *Thoughtfully Curated Selection Of Outlets*

Stroll through Ogami's charming Beachtown, a barefoot luxury hub where local brands shine. Discover curated beach wear, home accessories, and body care products. Indulge in specialty coffee, artisanal ice cream, fresh-baked goods, and health-conscious eateries. It's a perfect blend of coastal charm and sophisticated retail therapy.



## NATURE'S INFINITY POOLS

*+120,000 M<sup>2</sup> of Swimmable Lagoons*

At Ogami, the dual lagoon concept creates an island-like ambiance that elevates the community's allure. The lagoons not only offer recreational opportunities and picturesque views but also infuse Ogami with a distinctive island charm that enhances its coastal landscape.



## A CENTRAL CLUBHOUSE OASIS

*Every Detail Designed to Cater to Your Needs*

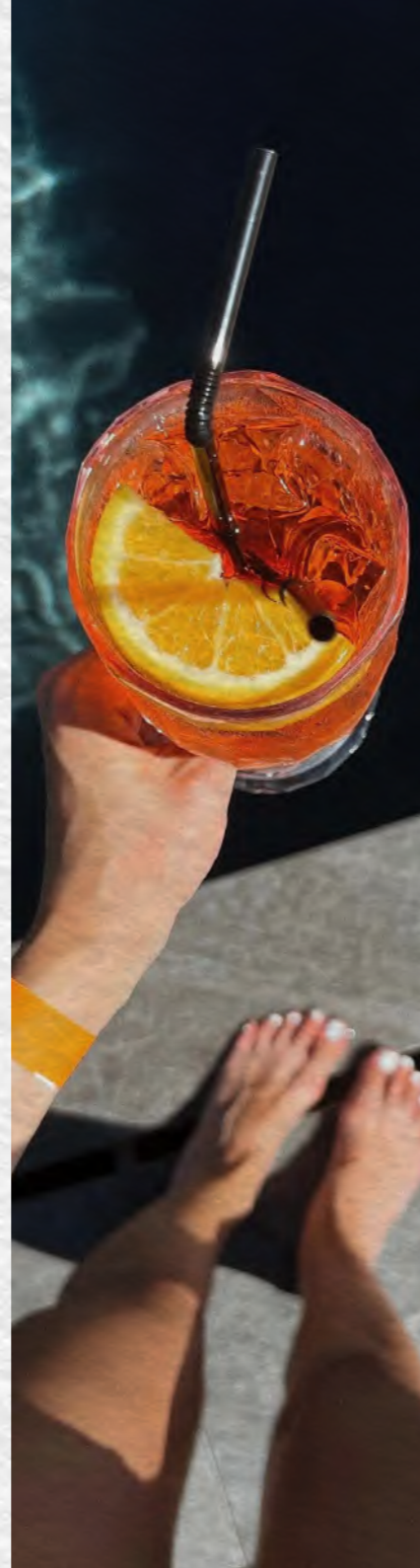
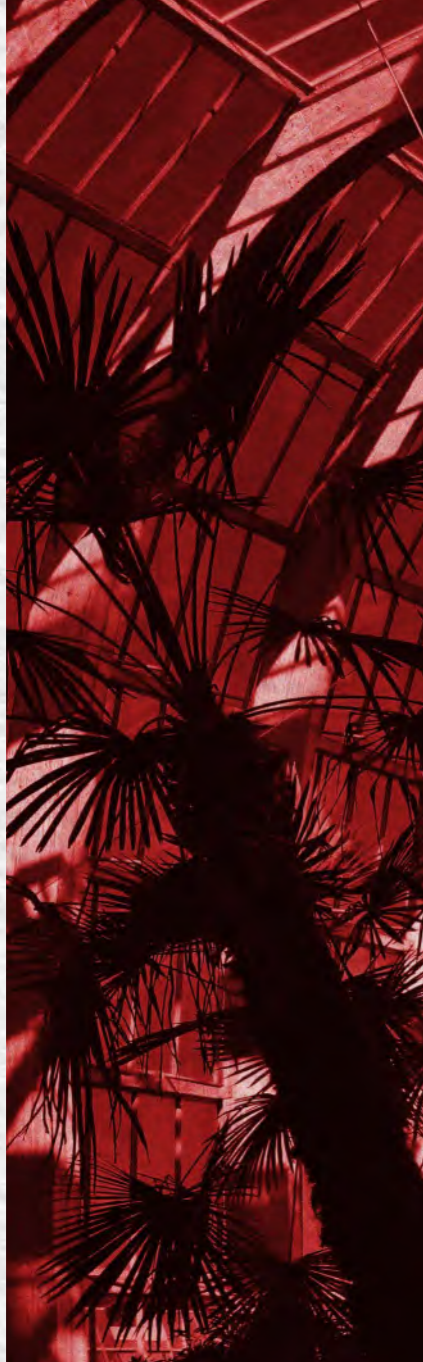
The Clubhouse is Ogami's social epicenter, seamlessly blending indoor sophistication with outdoor splendor. Its circular and infinity pools frame perfect sea views, while versatile spaces cater to every social occasion. It's where the Ogami community comes together to celebrate life by the coast.



## NURTURE YOUR WELL-BEING

*A Holistic Sanctuary for Body, Mind & Soul*

At Ogami's Wellness Center, holistic health takes center stage. State-of-the-art facilities and expert-led programs cater to all aspects of well-being. From energizing workouts to serene yoga sessions with sea and lagoon views, it's your personal retreat for physical and mental rejuvenation.



## A VILLAGE OF VIBRANT EXPERIENCES

### *Where Day Seamlessly Turns to Night*

Ogami's Retail Village is a hive of activity throughout the day and night. By day, explore gourmet food markets and unique boutiques. As night falls, the area transforms with lively nightlife spots and sophisticated pool bars. Enjoy exceptional dining experiences with breathtaking views of the Mediterranean.



## A REFINED SPORTS EXPERIENCE

### *Mastering the Balance of Sports & Leisure*

Ogami's sports facilities cater to every passion. The Racquet Club offers premium tennis and padel courts, while football enthusiasts can enjoy spirited matches on the 5-a-side pitch. Whether you're a seasoned athlete or a casual player, these world-class amenities inspire an active, healthy lifestyle by the sea.

3

***NOBU***

*a GLOBAL*

*partner*

# NOBU

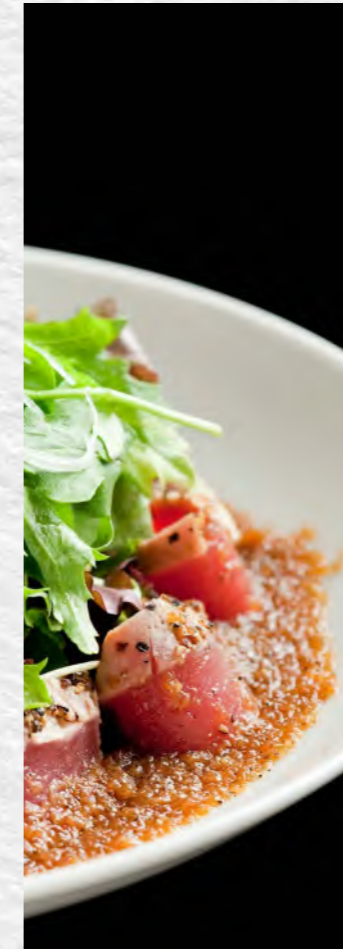
RESTAURANT | HOTEL | RESIDENCES

## BRINGING YOU NOBU HOTEL & RESIDENCES IN THE NORTH COAST

Blending contemporary luxury and subtle Japanese nuances into the concept of a luxury lifestyle experience. The hotels and residences are design-led, while the restaurants and bars are local and vibrant with an atmosphere charged with a sense of being part of something extraordinary.

*Nobu: Where  
gastronomy meets  
hospitality*

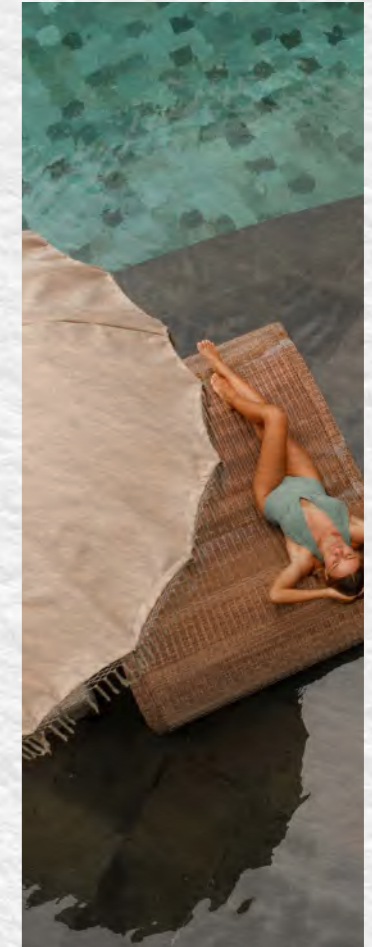
### RESTAURANT



### BRANDED RESIDENCES



### HOTEL





ARCHITECTURE

&

INTERIORS



## A HARMONY OF STYLE AND FUNCTION

*Architecture: Mediterranean  
warmth, Japanese Serenity.*

Ogami's architecture is a harmonious fusion of Mediterranean warmth and Japanese serenity. Inspired by concepts like Nagomi and Wu, the design creates a sense of balance and effortless flow. Arched walkways, tiered structures, and open spaces work in concert with the natural landscape, offering both aesthetic beauty and functional living.

# BEACHSIDE VILLA



DISCLAIMER All rendering and other visual materials, designs, facades are for illustrative purposes only.

# BEACHSIDE VILLA



DISCLAIMER All rendering and other visual materials, designs, facades are for illustrative purposes only.

# BEACHSIDE VILLA

5 BEDROOM

## GROUND FLOOR

<b>Floor Plan</b>	296 SQM
<b>Terrace</b>	98 SQM
<b>Roof Deck</b>	96 SQM
<b>Gross Area</b>	490 SQM

**Villa Key features:**  
 5 Ensuite Bedrooms  
 Driver's room & Bathroom  
 Maid's room & Bathroom  
 Outdoor Shower & Bathroom  
 Storage



# BEACHSIDE VILLA

5 BEDROOM

## ROOF DECK

<b>Floor Plan</b>	296 SQM
<b>Terrace</b>	98 SQM
<b>Roof Deck</b>	96 SQM
<b>Gross Area</b>	490 SQM



# SEASCAPE VILLA



DISCLAIMER All rendering and other visual materials, designs, facades are for illustrative purposes only.

# SEASCAPE VILLA



DISCLAIMER All rendering and other visual materials, designs, facades are for illustrative purposes only.

# SEASCAPE VILLA

4 BEDROOM

## GROUND FLOOR

<b>Floor Plan</b>	252 SQM
<b>Terrace</b>	34 SQM
<b>Roof Deck</b>	68 SQM
<b>Gross Area</b>	355 SQM

### Villa Key features:

- 4 Ensuite Bedrooms
- Driver's room & Bathroom
- Maid's room & Bathroom
- Outdoor Shower & Bathroom
- Storage room

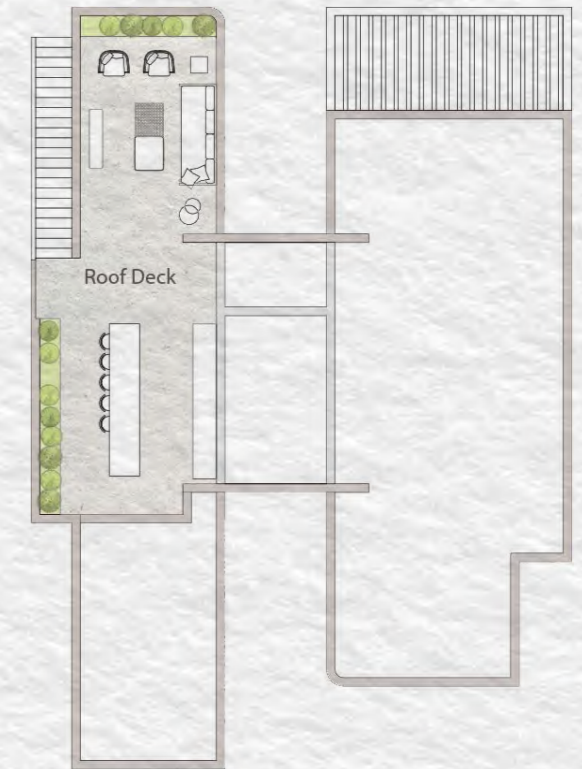


# SEASCAPE VILLA

4 BEDROOM

## ROOF DECK

<b>Floor Plan</b>	252 SQM
<b>Terrace</b>	34 SQM
<b>Roof Deck</b>	68 SQM
<b>Gross Area</b>	355 SQM



# DUSK VILLA



DISCLAIMER All rendering and other visual materials, designs, facades are for illustrative purposes only.

# DUSK VILLA



DISCLAIMER All rendering and other visual materials, designs, facades are for illustrative purposes only.

# DUSK VILLA

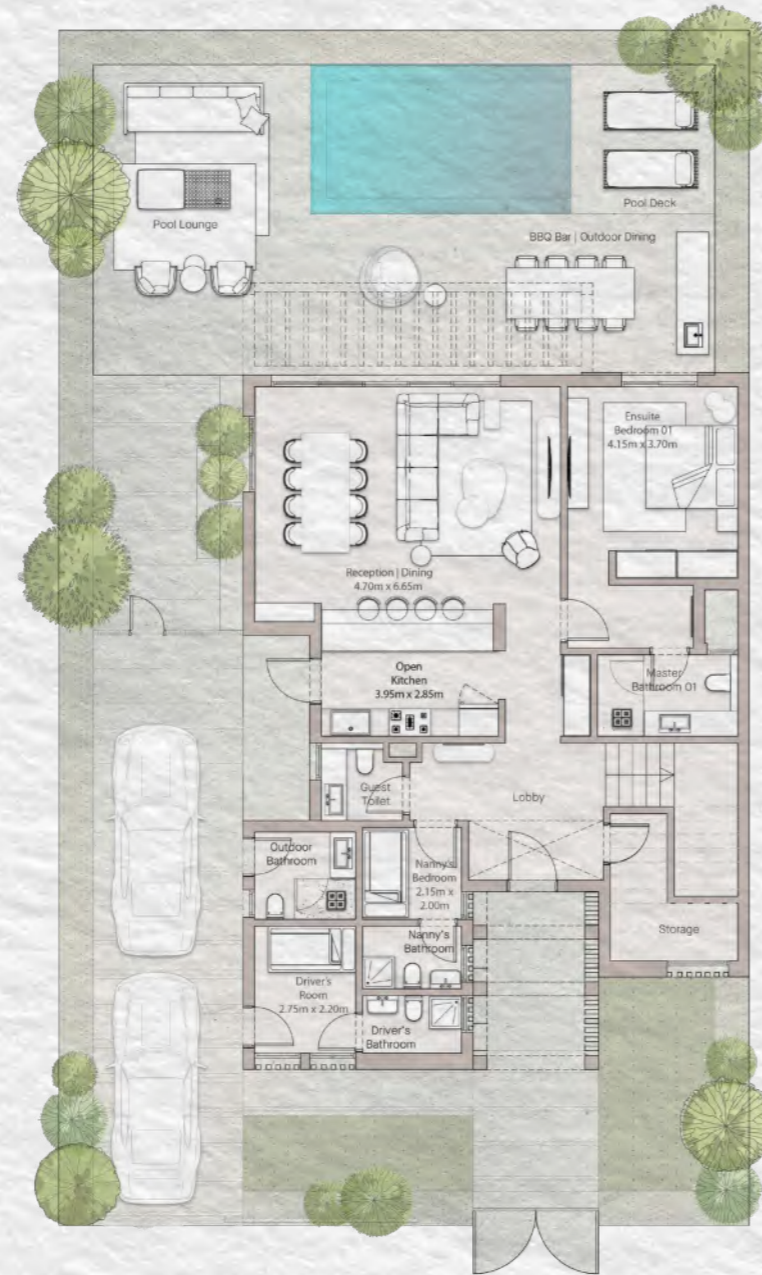
4 BEDROOM

## GROUND FLOOR

<b>Ground Floor</b>	142 SQM
<b>First Floor</b>	118 SQM
<b>Terrace</b>	49 SQM
<b>Gross Area</b>	310 SQM

### Villa Key features:

- 4 Ensuite Bedrooms
- Driver's room & Bathroom
- Maid's room & Bathroom
- Outdoor Bathroom
- Storage

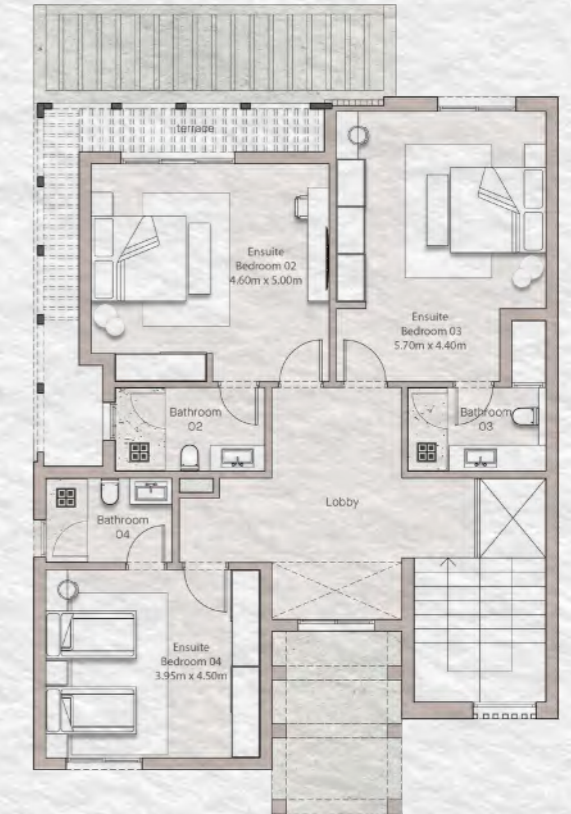


# DUSK VILLA

4 BEDROOM

## FIRST FLOOR

<b>Ground Floor</b>	142 SQM
<b>First Floor</b>	118 SQM
<b>Terrace</b>	49 SQM
<b>Gross Area</b>	310 SQM



# BAYVIEW VILLA



DISCLAIMER All rendering and other visual materials, designs, facades are for illustrative purposes only.

# BAYVIEW VILLA



DISCLAIMER All rendering and other visual materials, designs, facades are for illustrative purposes only.

# BAYVIEW VILLA

3 BEDROOM

## GROUND FLOOR

<b>Ground Floor</b>	128 SQM
<b>First Floor</b>	73 SQM
<b>Terrace</b>	53 SQM
<b>Gross Area</b>	254 SQM

### Villa Key features:

- 3 Ensuite Bedrooms
- Driver's room & Bathroom
- Maid's room & Bathroom
- Storage



# BAYVIEW VILLA

3 BEDROOM

## FIRST FLOOR

<b>Ground Floor</b>	128 SQM
<b>First Floor</b>	73 SQM
<b>Terrace</b>	53 SQM
<b>Gross Area</b>	254 SQM



# RAYS TWIN VILLA



DISCLAIMER All rendering and other visual materials, designs, facades are for illustrative purposes only.

# RAYS TWIN VILLA



DISCLAIMER All rendering and other visual materials, designs, facades are for illustrative purposes only.

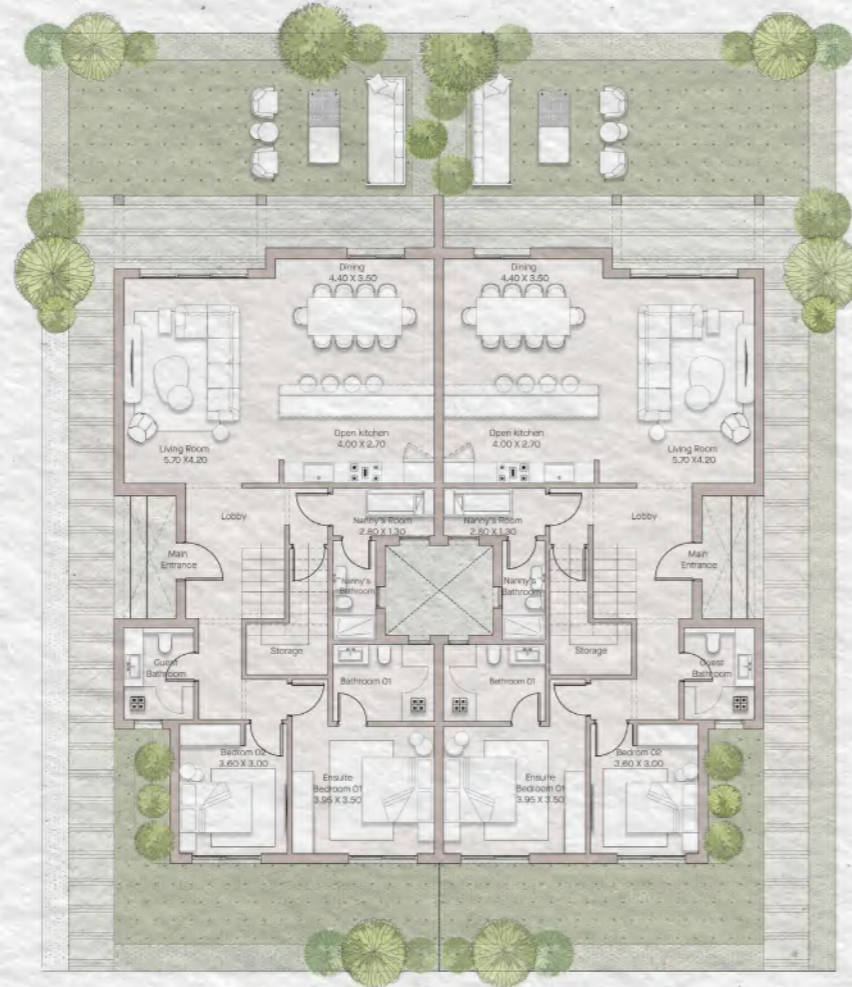
# RAYS TWIN VILLA

# RAYS TWIN VILLA

## GROUND FLOOR

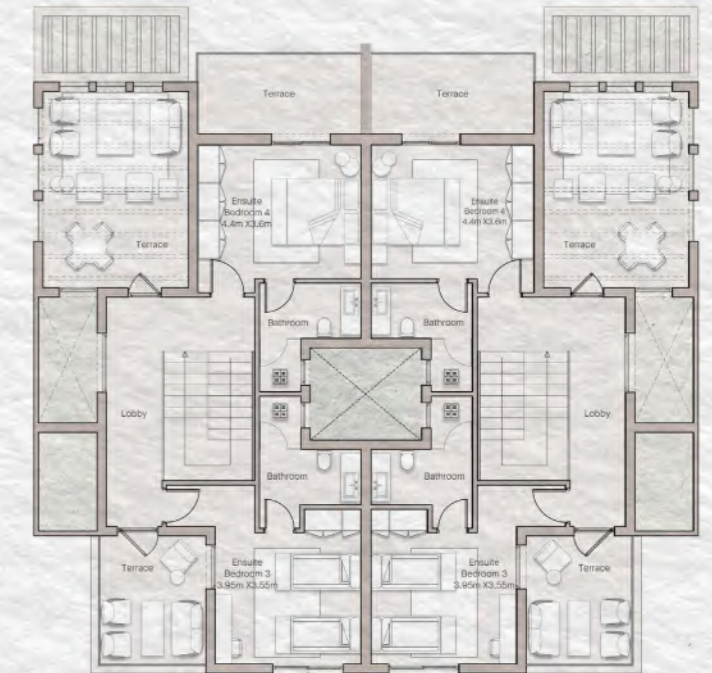
<b>Ground Floor</b>	136 SQM
<b>First Floor</b>	72 SQM
<b>Terrace</b>	60 SQM
<b>Gross Area</b>	268 SQM

**Villa Key features:**  
 3 Ensuite Bedrooms (3 out of 4)  
 Maid's room & Bathroom  
 Storage



## FIRST FLOOR

<b>Ground Floor</b>	136 SQM
<b>First Floor</b>	72 SQM
<b>Terrace</b>	60 SQM
<b>Gross Area</b>	268 SQM



# SUNSET TOWNHOME



DISCLAIMER All rendering and other visual materials, designs, facades are for illustrative purposes only.

# SUNSET TOWNHOME



DISCLAIMER All rendering and other visual materials, designs, facades are for illustrative purposes only.

# SUNSET TOWNHOME MIDDLE

# SUNSET TOWNHOME MIDDLE

## GROUND FLOOR

<b>Ground Floor</b>	102 SQM
<b>First Floor</b>	79 SQM
<b>Terrace</b>	45 SQM
<b>Gross Area</b>	226 SQM

**THM Key features:**  
 1 Ensuite Bedroom (1 out of 3)  
 Maid's room & Bathroom  
 Storage



## FIRST FLOOR

<b>Ground Floor</b>	102 SQM
<b>First Floor</b>	79 SQM
<b>Terrace</b>	45 SQM
<b>Gross Area</b>	226 SQM

**THM Key features:**  
 1 Ensuite Bedroom (1 out of 3)  
 Maid's room & Bathroom  
 Storage



# SUNSET TOWNHOME CORNER

# SUNSET TOWNHOME CORNER

## GROUND FLOOR

<b>Ground Floor</b>	112 SQM
<b>First Floor</b>	74 SQM
<b>Terrace</b>	47 SQM
<b>Gross Area</b>	233 SQM

**THC Key features:**  
3 Ensuite Bedrooms  
Maid's room & Bathroom  
Storage



## FIRST FLOOR

<b>Ground Floor</b>	112 SQM
<b>First Floor</b>	74 SQM
<b>Terrace</b>	47 SQM
<b>Gross Area</b>	233 SQM

**THC Key features:**  
3 Ensuite Bedrooms  
Maid's room & Bathroom  
Storage



# INTERIORS *that* INSPIRE

## *Where Comfort Meets Coastal Elegance*

The interiors at Ogami reflect a commitment to understated refinement and timeless style. Natural materials, neutral palettes, and thoughtful details create living spaces that are both calming and inspiring. Large windows frame breathtaking views, while custom furnishings and subtle textures add depth and character to each room.



DISCLAIMER All rendering and other visual materials, designs, facades are for illustrative purposes only.



DISCLAIMER All rendering and other visual materials, designs, facades are for illustrative purposes only.



DISCLAIMER All rendering and other visual materials, designs, facades are for illustrative purposes only.



DISCLAIMER All rendering and other visual materials, designs, facades are for illustrative purposes only.



DISCLAIMER All rendering and other visual materials, designs, facades are for illustrative purposes only.



DISCLAIMER All rendering and other visual materials, designs, facades are for illustrative purposes only.



DISCLAIMER All rendering and other visual materials, designs, facades are for illustrative purposes only.



DISCLAIMER All rendering and other visual materials, designs, facades are for illustrative purposes only.



DISCLAIMER All rendering and other visual materials, designs, facades are for illustrative purposes only.



DISCLAIMER All rendering and other visual materials, designs, facades are for illustrative purposes only.



DISCLAIMER All rendering and other visual materials, designs, facades are for illustrative purposes only.

# FINISHING SPECIFICATIONS

## 1. RECEPTION AREA

- WALLS Textured Paint Finish
- FLOOR High Quality Porcelain
- CEILING Textured Paint Finish

## 2. STAIRCASES

- WALLS Textured Paint Finish
- FLOOR Imported Polished Marble
- CEILING Textured Paint Finish

## 3. KITCHEN

- WALLS Textured Paint Finish
- FLOOR High quality Porcelain
- CEILING Textured Paint Finish

## 4. GUEST TOILET & POWDER ROOM

- WALLS Textured Paint Finish & High Quality Porcelain
- FLOOR High Quality Porcelain
- CEILING Textured Paint Finish

## 5. BATHROOMS

- WALLS Textured Paint Finish & High Quality Porcelain
- FLOOR High Quality Porcelain
- CEILING Textured Paint Finish

## 6. BEDROOMS

- WALLS Textured Paint Finish
- FLOOR High Quality Porcelain
- CEILING Textured Paint Finish

## 7. NANNY'S / DRIVER'S ROOM

- WALLS Acrylic Paint Finish
- FLOOR High Quality Ceramic
- CEILING Acrylic Paint Finish

## 8. NANNY'S / DRIVER'S BATHROOM

- WALLS Acrylic Paint Finish & High Quality Ceramic
- FLOOR High Quality Ceramic
- CEILING Acrylic Paint Finish

## 9. DOORS

- Oak Veneered Wood

## 10. TERRACES

- WALLS High Quality Exterior Paint
- FLOOR High Quality Porcelain

## 11. TERRACES

- WALLS High Quality Exterior Paint
- FLOOR High Quality Porcelain

## 12. OUTDOOR SHOWERS

- WALLS High Quality Exterior Paint
- FLOOR High Quality Honed Granite

## 13. ALUMINUM WORKS

- High Quality Double-Glazed Aluminum Frames In Dark Gray Color

## 14. SANITARYWARE

- High Quality Ceramic Sanitary Fixtures
- Brushed Stainless Steel Fittings

## 15. HEATERS

- Not Included – Provisions Only Conventional Water Heater
- Design Max Elec Load = 2 Kw – 220v

## 16. AIR CONDITIONING

- 4 / 5 Bedroom – One Floor Villa: Concealed Units – Cooling Only
- 2 Floors Villa: Concealed Units In Reception Area & Non-Inverter Split Units – Cooling Only For Bedrooms & Kitchen
- Nanny's And Driver's Room Are Provisions Only

### DISCLAIMER

Materials, colors, and design details shown are indicative and may vary based on availability and technical requirements. SODIC reserves the right to make modifications or substitutions at its discretion.

# SAMPLE BOARD



## DISCLAIMER

Materials, colors, and design details shown are indicative and may vary based on availability and technical requirements. SODIC reserves the right to make modifications or substitutions at its discretion.

#### DISCLAIMER:

Diagrams are not to scale and are for illustrative purposes.

- SODIC reserves the right to make alterations.
- All rendering and other visual materials, designs, facades are for illustrative purposes only and are subject to change.
- SODIC reserves the right to use different finishing elements and sanitary fixtures models from those which are shown in renders and specification sheets.
- Final models used in our finishing are similar and subject to market and availability at the time of operations.
- This brochure contains material, which is owned by or licensed to SODIC. This material includes, but not limited to, the design, layout, look, appearance and graphics. Reproduction is prohibited.

Contact us at **16220**

or simply visit one of our

#### **Sales Centres:**

**Sheikh Zayed:** Km. 38 Cairo-Alexandria Desert Road.

**New Cairo:** EDNC, Road 90, 5th Settlement, New Cairo.

